

## Louis Armstrong New Orleans International Airport - Passenger Summary

	January		February		March		April		May		June		July		August		September		October		November		December		Total	
	Enplaned	Deplaned	Enplaned	Deplaned	Enplaned	Deplaned	Enplaned	Deplaned	Enplaned	Deplaned	Enplaned	Deplaned	Enplaned	Deplaned	Enplaned	Deplaned	Enplaned	Deplaned	Enplaned	Deplaned	Enplaned	Deplaned	Enplaned	Deplaned	Enplaned	Deplaned
Total	283,681	290,541	283,577	286,707	335,360	330,053	315,637	325,543	352,471	323,828	318,960	319,301	335,165	336,278	290,561	297,883	264,086	262,390	335,265	342,184	336,595	335,348	313,732	315,624	3,765,090	3,765,680
2007 Combined Total	574,222		570,284		665,413		641,180		676,299		638,261		671,443		588,444		526,476		677,449		671,943		629,356		7,530,770	
Total	183,954	191,048	193,827	193,344	240,982	242,194	248,055	253,987	291,842	278,917	292,610	286,876	283,163	281,015	253,965	262,429	232,149	232,067	296,917	302,756	298,288	298,453	292,865	286,716	3,108,617	3,109,802
2006 Combined Total	375,002		387,171		483,176		502,042		570,759		579,486		564,178		516,394		464,216		599,673		596,741		579,581		6,218,419	
Change from 2006 to 2007	53.1%		47.3%		37.7%		27.7%		18.5%		10.1%		19.0%		14.0%		13.4%		13.0%		12.6%		8.6%		21.1%	
Total	392,500	381,038	413,317	411,520	471,579	474,442	450,095	471,510	501,320	451,670	425,347	443,809	440,196	441,356	361,295	355,067	23,232	18,966	96,797	97,538	151,337	150,158	177,351	173,707	3,904,366	3,870,781
2005 Combined Total	773,538		824,837		946,021		921,605		952,990		869,156		881,552		716,362		42,198		194,335		301,495		351,058		7,775,147	
Change from 2005 to 2007	-25.8%		-30.9%		-29.7%		-30.4%		-29.0%		-26.6%		-23.8%		-17.9%		1147.6%		248.6%		122.9%		79.3%		-3.1%	
Total	343,116	343,219	391,623	390,441	452,344	455,968	450,064	467,563	470,223	430,750	422,242	428,992	404,984	392,987	359,653	371,849	313,389	326,582	448,904	458,069	426,201	421,013	379,782	383,221	4,862,525	4,870,654
2004 Combined Total	686,335		782,064		908,312		917,627		900,973		851,234		797,971		731,502		639,971		906,973		847,214		763,003		9,733,179	
Change from 2004 to 2007	-16.3%		-27.1%		-26.7%		-30.1%		-24.9%		-25.0%		-15.9%		-19.6%		-17.7%		-25.3%		-20.7%		-17.5%		-22.6%	
Total	339,092	344,319	355,441	365,644	441,424	430,676	404,389	408,076	418,016	400,943	390,983	389,689	389,878	386,637	348,301	359,866	347,315	346,962	402,863	414,407	417,903	406,815	384,488	391,830	4,640,093	4,645,864
2003 Combined Total	683,411		721,085		872,100		812,465		818,959		780,672		776,515		708,167		694,277		817,270		824,718		776,318		9,285,957	
Change from 2003 to 2007	-16.0%		-20.9%		-23.7%		-21.1%		-17.4%		-18.2%		-13.5%		-16.9%		-24.2%		-17.1%		-18.5%		-18.9%		-18.9%	

- Trans States Airlines dba American Connection ending service Sept 6, 2006 (letter dated 8/7/06)
- PSA Airlines, Inc. beginning service again on September 6, 2006 with service to CLT using a CRJ
- ExpressJet started service on April 30, 2007

- ABX did not operate Jun-05 thru Aug-05 and ended service in Jan-06
- Air Canada ended scheduled service in Jun-04
- Air Canada Jazz operated from Jun-04 thru Aug-05
- Air Wisconsin ended service in Apr-05
- America West ended service in Aug-05
- Atlantic Coast (UA) ended service in Jan-04
- Atlantic Southeast did not operate between Feb-05 thru Nov-05
- Chautauqua (AA) began in Dec-05
- Chautauqua (UA) operated Nov-04 thru Aug-05
- Comair did not operate from May-04 thru Feb-05
- Freedom operated between Nov-05 and Jun-06
- Frontier ended service in Aug-05
- Mesa Airlines began service in May-06
- Midwest Express Dec-04 thru Aug-05
- PSA Airlines provided service Mar-06 thru May-06
- Shuttle began service in Jul-05
- Skywest ended service in Jan-05
- TACA ended service in Aug-05
- Trans States (AA) began in Jan-05
- UPS Supply Chain ended service Jun-06
- US Airways Express ended service in Mar-04

701 which is a 70 passenger regional jet (letter dated 8/28/06)

Jan-08

Jan-07

Feb-07

Feb-06

**I. Aircraft Movements**

(a) Passenger and Combi (combination) Aircraft	7 913	6 159	5 708	4 143
(b) All-Cargo Aircraft	224	213	194	285
(c) <b>Total Air Transport Movements (a + b)</b>	<b>8 137</b>	<b>6 372</b>	<b>5 902</b>	<b>4 428</b>
(d) <b>General Aviation and Other Aircraft Movements</b>				
<b>Total Aircraft Movements (c + d)</b>	<b>8 137</b>	<b>6 372</b>	<b>5 902</b>	<b>4 428</b>

**II. Commercial Passengers**

(a) International Passengers (enplaned + deplaned)	3 909	172	3 695	4 920
(b) Domestic Passengers (enplaned + deplaned)	651 316	651 316	566 589	382 251
(c) <b>Total Terminal Passengers (a + b)</b>	<b>655 225</b>	<b>651 488</b>	<b>570 284</b>	<b>387 171</b>
(d) <b>Direct Transit Passengers</b>				
<b>Total Passengers (c + d)</b>	<b>655 225</b>	<b>651 488</b>	<b>570 284</b>	<b>387 171</b>

**III. Cargo (Freight & Mail) in Metric Tonnes**

(a) International Freight (loaded + unloaded)	10	8	8	19
(b) Domestic Freight (loaded + unloaded)	3 441	3 309	3 345	4 038
(c) <b>Total Freight (a + b)</b>	<b>3 450.3</b>	<b>3 317.2</b>	<b>3 353.4</b>	<b>4 057.1</b>
(d) Mail (loaded + unloaded)	0.1	0.1	0.6	0.8
<b>Total Cargo (c + d)</b>	<b>3 450.4</b>	<b>3 317.3</b>	<b>3 354.0</b>	<b>4 057.9</b>

Event(s) affecting traffic for the period reported:


Prepared by:

FAX/Phone/Telex No:

Reporting Instructions: \_\_\_\_\_

Mar-07

Mar-06

Apr-07

Apr-06

May-07

May-06

6 465	5 284	6 213	5 462	6 911	6 032
230	276	200	285	224	293
6 695	5 560	6 413	5 747	7 135	6 325
2 855	3 043				
9 550	8 603	6 413	5 747	7 135	6 325

0	0	0	0	1 324	1 189
665 540	483 176	641 180	502 042	674 975	569 570
665 540	483 176	641 180	502 042	676 299	570 759
665 540	483 176	641 180	502 042	676 299	570 759

13.57	22.99	10	32	8	0
2938.22	4110.23	3 471	3 983	3 863	4 429
2951.79	4133.22	3 481.4	4 014.5	3 870.8	4 429.4
0.31	0.21	0.2	0.1	0.7	0.1
2952.10	4133.43	3 481.6	4 014.7	3 871.5	4 429.4

Jun-07

Jun-06

Jul-07

Jul-06

7 109	6 045	7 371	6 391
211	218	202	191
7 320	6 263	7 573	6 582
7 320	6 263	7 573	6 582

1 384	2 139	491	1 626
636 877	577 347	670 952	562 552
638 261	579 486	671 443	564 178
638 261	579 486	671 443	564 178

20.03	34.65	15.69	41.92
3773.61	3867.79	3720.03	3258.71
3793.64	3902.44	3735.72	3300.63
0.88	1.67	0.00	2.05
3794.52	3904.11	3735.72	3302.68







	A	B	C	D	E	H	I	L	M	P	Q	T	U	X	Y	AB	AC	AF	AG	AJ	AK	AN	AO	AR	AS	AT	AU	
125	<b>LOUIS ARMSTRONG NEW ORLEANS INTERNATIONAL AIRPORT - 2008 MAIL STATISTICS (in pounds)</b>																											
126																												
127	Mail	January		February		March		April		May		June		July		August		September		October		November		December		Total		
128		Enplaned	Deplaned	Enplaned	Deplaned	Enplaned	Deplaned	Enplaned	Deplaned	Enplaned	Deplaned	Enplaned	Deplaned	Enplaned	Deplaned	Enplaned	Deplaned	Enplaned	Deplaned	Enplaned	Deplaned	Enplaned	Deplaned	Enplaned	Deplaned	Enplaned	Deplaned	
129	<b>DOMESTIC</b>																											
130	AirTran Airways	0	0			0	0	0	0			0	0								0	0					0	0
131	American Airlines	0	131			740	765	30	0	0	3,059	0	0			0	2,889			0	0	0	1,257			770	8,101	
132	American Eagle																										0	0
133	Chautauqua (AA)																				0	0					0	0
134	Trans States Airlines (AA)							0	0												0	0					0	0
135	Continental					0	0	0	0	0	0	0	0								0	0					0	0
136	Chautauqua (CO)					0	0	0	0	0	0	0	0								0	0					0	0
137	Continental Express (CO)					0	0	0	0	0	0	0	0								0	0					0	0
138	Delta Air Lines					0	0	0	0	0	0	0	0								0	0					0	0
139	Atlantic Southeast Airlines (DL)					0	0	0	0	0	0	0	0								0	0					0	0
140	Chautauqua (DL)					0	0	0	0	0	0	0	0								0	0					0	0
141	Comair (DL)					0	0	0	0	0	0	0	0								0	0					0	0
142	Freedom (DL)																										0	0
143	Pinnacle (DL)																										0	0
144	Shuttle America (DL)							0	0			0	0								0	0					0	0
145	SkyWest (DL)							0	0			0	0								0	0					0	0
146	ExpressJet					0	0					0	0														0	0
147	Jet Blue					0	0	0	0			0	0								0	0					0	0
148	Northwest	0	25			0	24	0	5	0	11	0	0	0	4						0	0					0	69
149	Southwest							0	0	0	0	0	0								0	0					0	0
150	United							0	0	0	0	0	0								0	0					0	0
151	Air Wisconsin (UA)																										0	0
152	Chautauqua (UA)																										0	0
153	GoJet (UA)																				0	0					0	0
154	Shuttle America (UA)											0	0								0	0					0	0
155	Trans States Airlines (UA)																										0	0
156	US Airways							0	0	0	0	0	0								0	0					0	0
157	Mesa Airlines									0	0	0	0								0	0					0	0
158	PSA Airlines					0	47	0	0	0	0	0	0								0	0					0	47
159	Republic							0	0	0	0	0	0								0	0					0	0
160	Atlantic Aviation																										0	0
166	<b>Total Domestic</b>	0	156	0	0	740	836	30	5	0	3,070	0	0	0	4	0	2,889	0	0	0	0	0	1,257	0	0	770	8,217	
167	<i>in metric tonnes</i>	0.00	0.07	0.00	0.00	0.34	0.38	0.01	0.00	0.00	1.39	0.00	0.00	0.00	0.00	0.00	1.31	0.00	0.00	0.00	0.00	0.00	0.57	0.00	0.00	0.35	3.73	
168																												
169	<b>TOTAL MAIL</b>	156		0		1,576		35		3,070		0		4		2,889		0		0		1,257		0		8,987		
170	<i>in metric tonnes</i>	0.07		0.00		0.71		0.02		1.39		0.00		0.0018		1.31		0.00		0.00		0.57		0.00		4.08		
171																												
172																												

























	A	B	C	D	E	F	G	H	I	J	K	L	M	N	O	P	Q	R	S	T	U	V	W	X	Y	Z	AA		
205	LOUIS ARMSTRONG NEW ORLEANS INTERNATIONAL AIRPORT - 2006 CARGO AND MAIL COMBINED STATISTICS (in pounds)																												
206	LOUIS ARMSTRONG NEW ORLEANS INTERNATIONAL AIRPORT - 2006 CARGO AND MAIL COMBINED STATISTICS (in pounds)																												
207	LOUIS ARMSTRONG NEW ORLEANS INTERNATIONAL AIRPORT - 2006 CARGO AND MAIL COMBINED STATISTICS (in pounds)																												
208		January	February	March	April	May	June	July	August	September	October	November	December	Total															
209		Total	Total	Total	Total	Total	Total	Total	Total	Total	Total	Total	Total	Total															
210	DOMESTIC																												
211	AirTran Airways	0	0	0	0	0	0	0	0	0	0	0	0	0	0	0	0	0	0	0	0	0	0	0	0	0	0	0	0
212	American Airlines	1,237	4,767	2,671	478	787	27,718	13,334	1,379	11,876	17,064	591	4,918	86,820															
213	Chautauqua (AA)	0	0	0	0	0	0	0	0	0	0	0	0	0															
214	Trans States Airlines (AA)	0	0	0	0	0	0	0	0	0	0	0	0	0															
215	Continental	530,196	735,679	466,023	346,656	383,146	463,016	388,346	418,966	416,913	736,764	736,764	331,954	5,954,423															
216	Continental Express (CO)	0	0	0	0	0	0	0	0	0	0	0	0	0															
217	Delta Air Lines	199,625	242,900	122,962	85,935	176,130	133,097	136,642	176,389	134,040	148,016	156,988	190,241	1,902,965															
218	Atlantic Southeast Airline	0	291	0	1,715	2,242	3,065	4,935	2,314	27	837	563	0	15,989															
219	Chautauqua (DL)	1,068	1,217	576	486	868	859	2,143	1,557	780	1,292	922	0	11,768															
220	Comair (DL)	188	18	197	176	460	236	413	493	909	306	508	317	4,221															
221	Freedom (DL)	0	10	23	0	42	42	0	0	1,024	1,390	0	0	2,531															
222	SkyWest (DL)	0	0	0	0	0	0	0	0	0	0	0	68	68															
223	Jet Blue	0	0	0	0	0	0	0	0	0	0	0	0	0															
224	Northwest	5,373	4,557	3,794	2,350	1,630	1,755	1,395	3,356	1,575	2,637	2,817	2,787	34,026															
225	Southwest	496,229	515,069	596,540	644,013	831,219	870,998	759,179	804,061	628,796	632,293	654,207	715,951	8,148,555															
226	United	26,199	36,798	36,732	30,430	58,102	63,605	66,197	82,532	39,320	25,502	34,606	26,721	526,744															
227	Air Wisconsin (UA)	0	0	0	0	0	0	0	0	0	0	0	0	0															
228	Chautauqua (UA)	0	0	0	0	0	0	0	0	0	0	0	0	0															
229	Shuttle America (UA)	0	0	0	0	0	0	0	0	0	0	0	0	0															
230	Trans States Airlines (UA)	0	0	0	0	0	0	0	0	0	0	0	0	0															
231	US Airways	17,781	26,066	20,383	13,852	18,594	24,928	25,383	47,808	48,851	46,924	52,473	25,016	368,059															
232	Mesa Airlines	0	0	0	0	0	0	0	0	0	0	0	0	0															
233	PSA Airlines	0	0	1,612	2,433	119	0	0	0	1,335	189	678	147	6,513															
234	General Aviation Corpora	0	6,000	15,300	0	0	0	0	0	0	0	0	0	21,300															
235	ABX Air Inc.	402,681	0	0	0	0	0	0	0	0	0	0	67,819	470,500															
236	DHL	688,611	1,234,495	1,382,520	1,925,921	1,984,184	1,878,833	1,619,283	2,135,765	1,785,235	1,770,402	1,903,633	1,614,999	19,923,881															
237	Emery	742,135	769,966	778,923	720,544	698,771	59,851	0	0	0	0	0	0	3,770,190															
238	Federal Express	3,160,102	3,715,604	3,920,493	3,530,012	4,048,392	3,313,510	2,800,530	3,342,008	3,205,033	3,053,772	3,241,764	3,387,495	40,718,715															
239	UPS	1,547,894	1,613,222	1,715,065	1,477,411	1,562,536	1,690,928	1,372,446	1,631,075	1,501,389	1,548,780	1,590,184	1,680,989	18,931,919															
240	Total Domestic Cargo & Mail	7,819,319	8,906,659	9,063,814	8,782,412	9,767,222	8,532,441	7,190,226	8,647,703	7,777,103	7,986,168	8,376,698	8,049,422	100,899,187															
241	in metric tonnes	3,546.06	4,039.17	4,110.44	3,982.82	4,429.44	3,869.46	3,260.77	3,921.73	3,526.92	3,621.73	3,798.83	3,650.41	45,757.78															
242																													
243	INTERNATIONAL																												
244	Air Canada Jazz	0	0	0	0	0	0	0	0	0	0	0	0	0															
245	Delta Air Lines	48,636	41,259	50,706	70,162	0	76,036	89,372	75,882	11,873	42,589	52,403	0	558,918															
246	Atlantic Southeast Airline	0	0	0	0	0	353	2,854	930	0	0	0	0	4,137															
247	Chautauqua (DL)	0	0	0	0	0	0	202	0	0	0	0	202																
248	TACA	0	0	0	0	0	0	0	0	0	0	0	0																
249	UPS	0	0	0	0	0	0	0	0	0	0	0	0																
250	Total International Cargo & M	48,636	41,259	50,706	70,162	0	76,389	92,428	76,812	11,873	42,589	52,403	0	563,257															
251	in metric tonnes	22.06	18.71	23.00	31.82	0.00	34.64	41.92	34.83	5.38	19.31	23.76	0.00	255.44															
252																													
253	Total	7,867,955	8,947,918	9,114,520	8,852,574	9,767,222	8,608,830	7,282,654	8,724,515	7,788,976	8,028,757	8,429,101	8,049,422	101,462,444															
254	in metric tonnes	3,568.12	4,057.88	4,133.43	4,014.64	4,429.44	3,904.10	3,302.68	3,956.57	3,532.30	3,641.04	3,822.60	3,650.41	46,013.22															





**LOUIS ARMSTRONG NEW ORLEANS INTERNATIONAL AIRPORT - 2005 MAIL STATISTICS (in pounds)**

	January		February		March		April		May		June		July		August		September		October		November		December		Total		
	Enplaned	Deplaned	Enplaned	Deplaned	Enplaned	Deplaned	Enplaned	Deplaned	Enplaned	Deplaned	Enplaned	Deplaned	Enplaned	Deplaned	Enplaned	Deplaned	Enplaned	Deplaned	Enplaned	Deplaned	Enplaned	Deplaned	Enplaned	Deplaned	Enplaned	Deplaned	
<b>DOMESTIC</b>																											
AirTran Airways	0	0	814	80	0	0	0	0	0	0	0	0	0	0	0	0	0	0	0	0	0	0	0	0	0	814	80
America West Airlines	1,371	30,307	226	31,503	1,705	63,566	4,552	23,422	4,366	17,807	1,058	18,561	63	16,332	593	17,690	0	0	0	0	0	0	0	0	0	13,934	219,188
American Airlines	138,627	174,445	41,097	40,178	40,154	22,357	99,363	62,333	51,187	44,657	46,741	78,417	44,938	75,455	25,186	48,524	539	1,557	0	0	160	273	2,081	2,182	490,073	550,378	
Chautauqua (AA)	0	0	0	0	0	0	0	0	0	0	0	0	0	0	0	0	0	0	0	0	0	0	0	0	0	0	0
Trans States Airlines (AA)	0	0	0	0	0	0	0	0	0	0	0	0	0	0	0	0	0	0	0	0	0	0	0	0	0	0	0
Continental	91,551	77,299	99,624	86,990	57,988	137,536	39,675	90,443	12,459	55,637	21,456	47,420	12,040	55,196	9,076	43,005	0	0	0	0	0	0	0	0	0	343,869	593,526
Continental Express (CO)	0	1,041	0	84	0	472	0	780	0	776	0	375	0	211	0	545	0	0	0	0	0	0	0	0	0	0	4,284
Delta Air Lines	111,273	164,762	107,979	192,893	61,009	94,904	42,209	58,740	33,132	37,087	23,850	30,040	16,466	24,150	0	0	0	0	0	299	194	504	50	301	396,162	603,680	
Atlantic Southeast Airlines (DL)	0	0	0	0	0	0	0	0	0	0	0	0	0	0	0	0	0	0	0	0	0	0	0	0	0	0	0
Chautauqua (DL)	0	0	0	0	0	0	0	0	0	0	0	0	0	0	0	0	0	0	0	0	0	0	0	0	0	0	0
Comair (DL)	0	0	0	0	0	0	0	0	0	0	0	0	0	0	0	0	0	0	0	0	0	0	0	0	0	0	0
Freedom (DL)	0	0	0	0	0	0	0	0	0	0	0	0	0	0	0	0	0	0	0	0	0	0	0	0	0	0	0
SkyWest (DL)	0	0	0	0	0	0	0	0	0	0	0	0	0	0	0	0	0	0	0	0	0	0	0	0	0	0	0
Frontier	0	0	0	0	0	0	0	0	0	0	0	0	0	0	0	0	0	0	0	0	0	0	0	0	0	0	0
Jet Blue	11,728	46,410	9,098	32,761	11,187	39,752	18,015	17,894	18,113	19,419	13,313	18,304	9,237	26,971	14,867	22,969	0	0	0	0	0	0	0	0	0	105,558	224,480
Midwest Airlines	0	2,847	52	22,509	2148	24,958	2651	5,640	14532	19,786	6739	14,455	7148	12,980	7552	6,921	0	0	0	0	0	0	0	0	0	40822	110,096
Northwest	0	155	0	212	0	920	0	356	0	372	0	277	0	0	97	0	7,324	0	0	0	14	0	76	0	0	9,803	
Southwest	201,599	307,939	109,412	201,781	104,193	223,782	110,067	226,446	82,962	190,820	52,380	176,522	49,088	147,957	41,103	176,998	0	640	0	34	58	203	0	65	750,862	1,653,187	
United	63,972	158,822	59,720	160,512	91,154	211,754	62,862	166,155	61,645	159,708	71,268	125,661	60,197	135,994	42,855	92,404	0	0	1,085	1,435	0	0	0	0	0	514,758	1,212,445
Air Wisconsin (UA)	0	0	0	0	0	0	0	0	0	0	0	0	0	0	0	0	0	0	0	0	0	0	0	0	0	0	0
Chautauqua (UA)	0	0	0	0	0	0	0	0	0	0	0	0	0	0	0	0	0	0	0	0	0	0	0	0	0	0	0
Shuttle America (UA)	0	0	0	0	0	0	0	0	0	0	0	0	0	0	0	0	0	0	0	0	0	0	0	0	0	0	0
US Airways	32,842	72,009	5,746	6,258	0	0	5,273	13,668	10,825	13,527	11,005	28,153	16,182	47,167	0	0	0	0	0	0	0	208	0	25	81,873	181,015	
General Aviation Corporation	0	0	0	0	0	0	0	0	0	0	0	0	0	0	0	0	0	0	0	0	0	0	0	0	0	0	0
ABX Air Inc.	0	0	0	0	0	0	0	0	0	0	0	0	0	0	0	0	0	0	0	0	0	0	0	0	0	0	0
DHL	0	0	0	0	0	0	0	0	0	0	0	0	0	0	0	0	0	0	0	0	0	0	0	0	0	0	0
Emery	0	0	0	0	0	0	0	0	0	0	0	0	0	0	0	0	0	0	0	0	0	0	0	0	0	0	0
Federal Express	0	0	0	0	0	0	0	0	0	0	0	0	0	0	0	0	0	0	0	0	0	0	0	0	0	0	0
UPS	0	0	0	0	0	0	0	0	0	0	0	0	0	0	0	0	0	0	0	0	0	0	0	0	0	0	0
<b>Total Domestic</b>	<b>652,963</b>	<b>1,036,036</b>	<b>433,768</b>	<b>775,761</b>	<b>369,538</b>	<b>820,001</b>	<b>384,667</b>	<b>665,877</b>	<b>289,221</b>	<b>559,596</b>	<b>247,810</b>	<b>538,185</b>	<b>215,359</b>	<b>542,413</b>	<b>141,232</b>	<b>409,153</b>	<b>539</b>	<b>9,521</b>	<b>1,085</b>	<b>1,768</b>	<b>412</b>	<b>1,202</b>	<b>2,131</b>	<b>2,649</b>	<b>2,738,725</b>	<b>5,362,162</b>	
<i>in metric tonnes</i>	<i>296.12</i>	<i>469.84</i>	<i>196.71</i>	<i>351.81</i>	<i>167.59</i>	<i>371.87</i>	<i>174.45</i>	<i>301.98</i>	<i>131.16</i>	<i>253.78</i>	<i>112.38</i>	<i>244.07</i>	<i>97.67</i>	<i>245.98</i>	<i>64.05</i>	<i>185.55</i>	<i>0.24</i>	<i>4.32</i>	<i>0.49</i>	<i>0.80</i>	<i>0.19</i>	<i>0.55</i>	<i>0.97</i>	<i>1.20</i>	<i>1,242.01</i>	<i>2,431.74</i>	
<b>TOTAL MAIL</b>	<b>1,688,999</b>	<b>1,209,529</b>	<b>1,189,539</b>	<b>1,050,544</b>	<b>848,817</b>	<b>785,995</b>	<b>757,772</b>	<b>550,385</b>	<b>10,060</b>	<b>2,853</b>	<b>1,614</b>	<b>4,780</b>	<b>8,100,887</b>														
<i>in metric tonnes</i>	<i>765.96</i>	<i>548.52</i>	<i>539.46</i>	<i>476.42</i>	<i>384.94</i>	<i>356.45</i>	<i>343.65</i>	<i>249.60</i>	<i>4.56</i>	<i>1.29</i>	<i>0.73</i>	<i>2.17</i>	<i>3,673.75</i>														





**LOUIS ARMSTRONG NEW ORLEANS INTERNATIONAL AIRPORT - 2005 CARGO AND MAIL COMBINED STATISTICS (in pounds)**

	January Combined	February Combined	March Combined	April Combined	May Combined	June Combined	July Combined	August Combined	September Combined	October Combined	November Combined	December Combined	Total Combined
<b>DOMESTIC</b>													
AirTran Airways	0	894	0	0	0	0	0	0	0	0	0	0	894
America West Airlines	39,482	38,555	76,779	38,463	35,120	32,821	26,316	33,282	13,406	0	0	0	334,224
American Airlines	317,983	95,283	62,764	162,436	100,444	129,578	129,330	86,310	11,595	0	860	4,885	1,101,468
Chautauqua (AA)	0	0	0	0	0	0	0	0	0	0	0	0	0
Trans States Airlines (AA)	0	0	0	0	0	0	0	0	0	0	0	0	0
Continental	369,957	401,870	429,521	344,862	318,381	280,664	292,939	229,792	5,169	95,053	385,935	794,894	3,949,037
Continental Express (CO)	3,234	1,290	1,625	2,634	1,525	867	1,487	849	1,246	801	0	0	15,558
Delta Air Lines	629,688	696,075	492,290	516,289	522,169	512,111	259,545	426,446	71,450	181,312	199,549	249,106	4,756,030
Atlantic Southeast Airlines (DL)	611	0	0	0	0	0	0	0	0	0	0	368	979
Chautauqua (DL)	136	59	0	0	0	26	203	0	0	0	0	865	1,289
Comair (DL)	0	0	0	0	0	241	80	52	0	0	0	451	824
Freedom (DL)	0	0	0	0	0	0	0	0	0	0	0	25	25
SkyWest (DL)	0	0	0	0	0	0	0	0	0	0	0	0	0
Frontier	21,464	16,702	22,062	18,191	9,438	11,966	10,090	13,591	0	0	0	0	123,504
Jet Blue	58,138	41,859	50,939	35,909	37,532	31,617	36,208	37,836	0	0	0	0	330,038
Midwest Airlines	3,229	23,613	29,241	9,350	37,759	25,247	24,427	19,970	0	0	0	0	172,836
Northwest	5,427	3,216	7,460	4,724	4,704	4,852	4,798	3,117	8,193	6,018	2,106	1,366	55,981
Southwest	1,326,132	1,159,670	1,196,933	1,321,961	1,405,199	1,440,795	1,259,782	1,182,483	640	132,813	367,242	465,997	11,259,647
United	335,681	347,020	421,566	355,583	335,310	331,605	356,842	284,108	0	19,894	13,800	11,350	2,812,759
Air Wisconsin (UA)	0	0	0	0	0	0	0	0	0	0	0	0	0
Chautauqua (UA)	0	0	0	0	0	0	0	0	0	0	0	0	0
Shuttle America (UA)	0	0	0	0	0	0	0	0	0	0	0	0	0
US Airways	162,333	61,952	61,085	89,010	97,457	111,304	114,672	0	0	0	5,549	11,162	714,524
General Aviation Corporation	0	0	0	0	0	0	0	0	0	0	0	0	0
ABX Air Inc.	881,357	860,378	960,237	965,015	439,079	0	0	0	151,158	362,651	798,465	1,041,331	6,459,671
DHL	99,625	86,639	108,868	91,678	576,494	1,197,173	1,004,262	1,201,808	0	0	0	0	4,366,547
Emery	763,363	706,944	904,762	680,010	659,797	758,345	604,387	653,353	0	211,377	931,816	406,854	7,281,008
Federal Express	7,423,347	8,167,124	9,325,767	8,722,049	7,909,410	8,508,086	7,940,126	7,740,097	2,706,825	4,414,659	4,501,427	3,663,055	81,021,972
UPS	1,801,461	1,804,409	1,923,254	1,888,401	1,796,791	1,958,095	1,791,126	1,717,106	753,802	1,564,588	1,516,815	1,683,372	20,199,220
<b>Total Domestic Cargo &amp; Mail</b>	<b>14,242,648</b>	<b>14,513,552</b>	<b>16,075,153</b>	<b>15,246,565</b>	<b>14,286,609</b>	<b>15,335,393</b>	<b>13,856,620</b>	<b>13,630,200</b>	<b>3,723,484</b>	<b>6,989,166</b>	<b>8,723,564</b>	<b>8,335,081</b>	<b>144,958,035</b>
<i>in metric tonnes</i>	<i>6,459.04</i>	<i>6,581.90</i>	<i>7,290.08</i>	<i>6,914.32</i>	<i>6,478.98</i>	<i>6,954.60</i>	<i>6,283.98</i>	<i>6,181.30</i>	<i>1,688.60</i>	<i>3,169.59</i>	<i>3,956.14</i>	<i>3,779.96</i>	<i>65,738.47</i>
<b>INTERNATIONAL</b>													
Air Canada	0	0	0	0	0	0	0	0	0	0	0	0	0
Air Canada Jazz	0	0	0	0	0	0	0	0	0	0	0	0	0
Delta Air Lines	55,656	135,548	131,428	110,348	79,405	89,640	152,694	0	0	25,643	30,411	30,411	841,184
TACA	0	0	0	0	0	0	0	0	0	0	0	0	0
UPS	0	0	0	0	0	0	0	0	0	0	0	7,400	7,400
<b>Total International Cargo &amp; Mail</b>	<b>55,656</b>	<b>135,548</b>	<b>131,428</b>	<b>110,348</b>	<b>79,405</b>	<b>89,640</b>	<b>152,694</b>	<b>0</b>	<b>0</b>	<b>25,643</b>	<b>30,411</b>	<b>37,811</b>	<b>848,584</b>
<i>in metric tonnes</i>	<i>25.24</i>	<i>61.47</i>	<i>59.60</i>	<i>50.04</i>	<i>36.01</i>	<i>40.65</i>	<i>69.25</i>	<i>0.00</i>	<i>0.00</i>	<i>11.63</i>	<i>13.79</i>	<i>17.15</i>	<i>384.83</i>
<b>Total Cargo &amp; Mail</b>	<b>14,298,304</b>	<b>14,649,100</b>	<b>16,206,581</b>	<b>15,356,913</b>	<b>14,366,014</b>	<b>15,425,033</b>	<b>14,009,314</b>	<b>13,630,200</b>	<b>3,723,484</b>	<b>7,014,809</b>	<b>8,753,975</b>	<b>8,372,892</b>	<b>145,806,619</b>
<i>in metric tonnes</i>	<i>6,484.28</i>	<i>6,643.37</i>	<i>7,349.68</i>	<i>6,964.36</i>	<i>6,514.99</i>	<i>6,995.25</i>	<i>6,353.22</i>	<i>6,181.30</i>	<i>1,688.60</i>	<i>3,181.22</i>	<i>3,969.93</i>	<i>3,797.11</i>	<i>66,123.30</i>

















**New Orleans International Airport - 2003 Air Mail Statistics**

	January		February		March		April		May		June		July		August		September		October		November		December		Total	
	Enplaned	Deplaned	Enplaned	Deplaned	Enplaned	Deplaned	Enplaned	Deplaned	Enplaned	Deplaned	Enplaned	Deplaned	Enplaned	Deplaned	Enplaned	Deplaned	Enplaned	Deplaned	Enplaned	Deplaned	Enplaned	Deplaned	Enplaned	Deplaned	Enplaned	Deplaned
AirTran Airways	11,805	14,477	8,199	5,658			2,669	4,867	22,907	4,174	3,542	7,174													49,122	36,350
America West Airlines	9,426	29,022	1,494	13,578	6,409	4,426	7,773	8,637	1,123	2,101	464	2,044	16,311	1,636	150	1,083	112	2,809	206	7,597	489	13,874	17,551	138	61,508	86,945
American Airlines	119,159	75,576	92,155	58,240	70,546	53,829	61,842	60,966	59,241	54,527	43,637	40,710	19,101	14,169	13,508	19,496	21,761	54,148	35,128	101,631	58,881	150,794	52,262	191,150	647,221	875,236
Trans States Airlines																									0	0
Continental	103,869	64,268	87,291	47,061	89,892	47,794	99,760	41,003	109,700	116,283	67,506	69,768	64,980	25,045	36,596	8,085	15,237	6,433	107,290	39,155	66,174	52,267	53,254	48,895	901,549	566,057
Continental Express											103	0	124	395	166	1	91	144	525		462	497	143	191	1,614	1,228
Delta Air Lines	142,330	231,879	124,548	175,113	88,393	164,041	77,831	191,794	64,902	155,261	70,730	116,832	281,167	284,213	208,628	286,473	142,411	264,643	146,929	262,442	166,282	227,486	117,583	262,175	1,631,734	2,622,352
Atlantic Southeast Airlines									0	0							18,000	9,000							18,000	9,000
Chautauqua																									0	0
Comair																	10,000								10,000	0
Sky West																									0	0
Frontier	9,676	2,562	9,247	4,003	8,993	7,498	8,106	7,237	1,365	4,112	4,124	17,103	27,308	27,255	12,746	13,214	11,085	4,445	6,528	3,304	7,695	3,587	1,676	9,420	108,549	103,740
Jet Blue	14,742	22,907	8,902	18,599	18,854	10,012	8,497	26,049	8,515	23,769	6,189	24,294	15,838	31,203	10,401	33,280	25,105	8,310			24,417	35,638	7,329	21,246	148,789	255,307
Midwest Express			11,701	2,863	8,814	4,171	8,657	259																	29,172	7,293
Northwest	44,719	71,338	13,557	53,908	9,610	53,308	21,228	68,384	30,167	17,895	12,986	37,996	13,640	28,310	10,755	10,557	2,863	5,825	1,983	2,754	1,990	12,710	1,842	2,125	165,340	365,110
Southwest	126,787	184,721	91,485	147,582	59,244	158,124	89,889	189,211	96,861	145,000	61,642	154,006	21,590	61,093	21,482	60,788	13,433	83,479	9,343	46,180	88,887	80,835	22,807	124,162	703,450	1,435,181
United	104,473	59,720	69,824	66,851	53,814	74,748	64,935	91,279	66,374	96,276	49,411	75,231	72,672	101,380	38,210	88,281	49,197	71,967	71,017	143,677	122,193	134,139	55,729	176,307	817,849	1,179,856
Air Wisconsin																									0	0
Atlantic Coast Airlines																									0	0
US Airways	48,297	55,219	48,082	36,706	40,202	44,174	31,190	35,086	34,071	39,848	29,836	89,713	14,120	41,774	4,902	3,275	5,322	7,889	4,126	2,915	57,698	14,031	33,260	58,326	351,106	428,956
US Airways Express		1	42	5	116	150	21	198	113	123	338	422	1,524	1,226	281	671	1,436	1,002	167	839	567	746	341	903	4,946	6,286
ABX Air Inc.																									0	0
DHL																									0	0
Emery																									0	0
Federal Express																									0	0
UPS																									0	0
<b>Total Domestic</b>	<b>735,283</b>	<b>811,690</b>	<b>566,527</b>	<b>630,167</b>	<b>454,887</b>	<b>622,275</b>	<b>482,398</b>	<b>724,970</b>	<b>495,339</b>	<b>659,369</b>	<b>350,508</b>	<b>635,293</b>	<b>548,375</b>	<b>617,699</b>	<b>357,825</b>	<b>525,204</b>	<b>316,053</b>	<b>520,094</b>	<b>383,242</b>	<b>610,494</b>	<b>595,735</b>	<b>726,604</b>	<b>363,777</b>	<b>895,038</b>	<b>5,649,949</b>	<b>7,978,897</b>
<i>in metric tonnes</i>	<i>333.45</i>	<i>368.10</i>	<i>256.92</i>	<i>285.78</i>	<i>206.29</i>	<i>282.20</i>	<i>218.77</i>	<i>328.77</i>	<i>224.64</i>	<i>299.02</i>	<i>158.96</i>	<i>288.11</i>	<i>248.69</i>	<i>280.13</i>	<i>162.27</i>	<i>238.18</i>	<i>143.33</i>	<i>235.86</i>	<i>173.80</i>	<i>276.86</i>	<i>270.17</i>	<i>329.51</i>	<i>164.97</i>	<i>405.90</i>	<i>2,562.25</i>	<i>3,618.43</i>
<b>TOTAL MAIL</b>	<b>1,546,973</b>		<b>1,196,694</b>		<b>1,077,162</b>		<b>1,207,368</b>		<b>1,154,708</b>		<b>985,801</b>		<b>1,166,074</b>		<b>883,029</b>		<b>836,147</b>		<b>993,736</b>		<b>1,322,339</b>		<b>1,258,815</b>		<b>13,628,846</b>	
<i>in metric tonnes</i>	<i>701.55</i>		<i>542.70</i>		<i>488.49</i>		<i>547.54</i>		<i>523.66</i>		<i>447.06</i>		<i>528.81</i>		<i>400.45</i>		<i>379.19</i>		<i>450.66</i>		<i>599.68</i>		<i>570.87</i>		<i>6,180.68</i>	



**New Orleans International Airport - 2003 Air Mail & Air Cargo Combined Statistics**

	January	February	March	April	May	June	July	August	September	October	November	December	Total
<b>DOMESTIC</b>													
AirTran Airways	26,282	13,857	0	7,536	27,081	10,716	0	0	0	0	0	0	85,472
America West Airlines	53,156	22,360	43,579	33,557	33,590	34,978	28,320	5,887	10,409	32,323	44,425	30,491	373,075
American Airlines	212,425	163,173	139,762	127,679	115,771	85,292	33,744	33,131	76,911	137,056	210,003	245,028	1,579,975
Trans States Airlines	0	0	0	0	0	0	0	0	0	0	0	0	0
Continental	358,982	328,879	372,152	340,086	498,385	401,158	319,321	287,084	246,129	367,918	362,774	285,775	4,168,643
Continental Express	0	0	0	0	0	737	2,974	2,081	1,545	2,608	3,074	1,874	14,893
Delta Air Lines	992,468	887,797	911,663	760,835	753,989	672,178	999,002	958,114	758,842	748,827	936,204	846,367	10,226,286
Atlantic Southeast Airlines	0	0	0	1,068	932	308	60	267	28,299	0	1,294	260	32,488
Chautauqua	0	0	0	0	0	0	0	821	0	1,925	1,244	0	3,990
Comair	0	0	28	20	30	76	54	202	12,207	750	793	0	14,160
Sky West	0	0	0	0	0	0	0	0	0	0	0	0	0
Frontier	31,690	27,847	32,814	25,680	11,495	25,930	64,853	59,149	38,708	24,371	18,316	28,344	389,197
Jet Blue	37,649	27,501	28,866	34,546	32,284	30,483	47,041	43,681	33,415	0	60,055	28,575	404,096
Midwest Express	0	20,421	20,932	19,033	0	0	0	0	0	0	0	0	60,386
Northwest	116,057	67,491	63,128	90,694	48,062	52,052	43,066	21,530	9,456	10,393	20,191	7,875	549,995
Southwest	1,103,777	1,172,691	1,116,673	1,319,819	1,521,754	1,403,711	1,219,478	1,009,846	971,779	1,016,442	1,179,471	1,130,689	14,166,130
United	338,358	271,354	238,375	276,904	386,339	339,931	393,957	313,902	257,235	331,955	427,205	388,179	3,963,694
Air Wisconsin	0	0	0	0	0	0	0	0	0	0	0	0	0
Atlantic Coast Airlines	0	0	0	0	0	0	0	0	0	0	0	0	0
US Airways	182,790	158,520	153,102	146,581	137,321	243,732	166,819	114,034	98,013	111,876	156,853	164,093	1,833,734
US Airways Express	13,115	10,716	10,259	9,824	10,540	10,099	13,295	10,888	11,612	10,851	10,500	21,424	143,123
ABX Air Inc.	972,625	934,838	946,943	994,310	930,954	931,505	1,008,740	1,007,679	903,309	1,040,983	898,239	1,004,410	11,574,535
DHL	161,302	159,245	157,445	167,551	162,244	155,428	164,500	165,056	162,293	168,799	133,757	162,854	1,920,474
Emery	620,575	682,437	721,666	714,304	718,996	679,893	746,599	747,640	774,281	864,822	714,286	700,881	8,686,380
Federal Express	8,070,891	7,926,207	8,110,188	8,008,644	7,870,598	7,352,466	7,847,898	7,941,936	7,696,166	8,431,441	7,251,832	7,940,375	94,448,642
UPS	1,857,831	1,851,992	1,787,840	1,729,147	1,774,264	1,618,902	1,763,614	1,856,445	1,717,274	2,010,673	1,992,462	2,066,322	22,026,766
<b>Total Domestic</b>	<b>15,149,973</b>	<b>14,727,326</b>	<b>14,855,415</b>	<b>14,807,818</b>	<b>15,034,629</b>	<b>14,049,575</b>	<b>14,863,335</b>	<b>14,579,373</b>	<b>13,807,883</b>	<b>15,314,013</b>	<b>14,422,978</b>	<b>15,053,816</b>	<b>176,666,134</b>
<i>in metric tonnes</i>	<i>6,870.51</i>	<i>6,678.84</i>	<i>6,736.93</i>	<i>6,715.35</i>	<i>6,818.20</i>	<i>6,371.48</i>	<i>6,740.52</i>	<i>6,611.75</i>	<i>6,261.87</i>	<i>6,944.90</i>	<i>6,540.82</i>	<i>6,826.91</i>	<i>80,118.09</i>
<b>INTERNATIONAL</b>													
Air Canada	4,158	4,702	6,956	3,196	5,971	3,329	0	0	1,657	1,479	6,911	4,395	42,754
Delta Air Lines	80,940	98,531	81,895	62,209	68,598	46,651	91,476	62,602	127,217	112,140	115,198	179,864	1,127,321
TACA	0	0	0	0	0	0	0	0	0	0	0	0	0
UPS	0	0	0	0	0	880	0	0	2,975	0	0	1,190	5,045
<b>Total International</b>	<b>85,098</b>	<b>103,233</b>	<b>88,851</b>	<b>65,405</b>	<b>74,569</b>	<b>50,860</b>	<b>91,476</b>	<b>62,602</b>	<b>131,849</b>	<b>113,619</b>	<b>122,109</b>	<b>185,449</b>	<b>1,175,120</b>
<i>in metric tonnes</i>	<i>38.59</i>	<i>46.82</i>	<i>40.29</i>	<i>29.66</i>	<i>33.82</i>	<i>23.07</i>	<i>41.48</i>	<i>28.39</i>	<i>59.79</i>	<i>51.53</i>	<i>55.38</i>	<i>84.10</i>	<i>532.92</i>
<b>Total</b>	<b>15,235,071</b>	<b>14,830,559</b>	<b>14,944,266</b>	<b>14,873,223</b>	<b>15,109,198</b>	<b>14,100,435</b>	<b>14,954,811</b>	<b>14,641,975</b>	<b>13,939,732</b>	<b>15,427,632</b>	<b>14,545,087</b>	<b>15,239,265</b>	<b>177,841,254</b>
<i>in metric tonnes</i>	<i>6,909.10</i>	<i>6,725.66</i>	<i>6,777.22</i>	<i>6,745.01</i>	<i>6,852.02</i>	<i>6,394.55</i>	<i>6,782.01</i>	<i>6,640.14</i>	<i>6,321.67</i>	<i>6,996.43</i>	<i>6,596.20</i>	<i>6,911.01</i>	<i>80,651.01</i>

LOUIS ARMSTRONG NEW ORLEANS INTERNATIONAL AIRPORT

Summary of Enplaned Passengers by Airline

	Month		%	Year-to-Date		%	Market Share	
	Dec-08	Dec-07	Change	2008	2007	Change	2008	2007
<b>Domestic Scheduled</b>								
AirTran Airways	12,449	13,678	-9.0%	157,701	165,069	0.0%	4.0%	4.4%
American Airlines	35,742	41,749	-14.4%	463,025	535,969	-13.6%	11.7%	14.2%
American Express Carriers	4,440	4,186	6.1%	57,673	34,741	66.0%	1.5%	0.9%
American System Total	40,182	45,935	-12.5%	520,698	570,710	-8.8%	13.1%	15.2%
Continental Airlines	38,649	41,320	-6.5%	520,304	536,790	-3.1%	13.1%	14.3%
Continental Express Carriers	2,290	2,177	5.2%	35,565	32,991	7.8%	0.9%	0.9%
Continental System Total	40,939	43,497	-5.9%	555,869	569,781	-2.4%	14.0%	15.1%
Delta Air Lines	40,792	32,493	25.5%	428,200	358,737	19.4%	10.8%	9.5%
Delta Express Carriers	5,316	8,125	-34.6%	83,294	106,796	-22.0%	2.1%	2.8%
Delta System Total	46,108	40,618	13.5%	511,494	465,533	9.9%	12.9%	12.4%
ExpressJet	0	10,237	-100.0%	82,784	79,769	4%	2.1%	2.1%
JetBlue	11,582	7,742	49.6%	122,618	90,976	34.8%	3.1%	2.4%
Northwest	11,560	11,574	-0.1%	158,824	173,137	-8.3%	4.0%	4.6%
Southwest	94,672	84,154	12.5%	1,129,495	954,360	18.4%	28.4%	25.3%
United Airlines	26,668	25,359	5.2%	302,828	281,246	7.7%	7.6%	7.5%
United Express Carriers	4,777	3,078	55.2%	50,910	55,251	-7.9%	1.3%	1.5%
United System Total	31,445	28,437	10.6%	353,738	336,497	5.1%	8.9%	8.9%
US Airways	20,798	19,807	5.0%	261,901	288,330	-9.2%	6.6%	7.7%
US Airways Express Carriers	7,923	6,968	13.7%	103,081	58,538	76.1%	2.6%	1.6%
US Airways System Total	28,721	26,775	7.3%	364,982	346,868	5.2%	9.2%	9.2%
<b>Total Domestic Scheduled</b>	<b>317,658</b>	<b>312,647</b>	<b>1.6%</b>	<b>3,958,203</b>	<b>3,752,700</b>	<b>5.5%</b>	<b>99.6%</b>	<b>99.6%</b>
<b>Charter</b>								
Domestic	487	825	-41.0%	9,766	6,935	40.8%	0.2%	0.2%
International	1,012	260	289.2%	5,198	6,370	-18.4%	0.1%	0.2%
<b>Total Charter</b>	<b>1,499</b>	<b>1,085</b>	<b>38.2%</b>	<b>14,964</b>	<b>13,305</b>	<b>12.5%</b>	<b>0.4%</b>	<b>0.4%</b>
<b>Total Enplaned</b>	<b>319,157</b>	<b>313,732</b>	<b>1.7%</b>	<b>3,973,167</b>	<b>3,766,005</b>	<b>5.5%</b>		

LOUIS ARMSTRONG NEW ORLEANS INTERNATIONAL AIRPORT

Summary of Deplanned Passengers by Airline

	Month		%	Year-to-Date		%	Market Share	
	Dec-08	Dec-07	Change	2008	2007	Change	2008	2007
<b>Domestic Scheduled</b>								
AirTran Airways	12,651	13,444	-5.9%	157,411	162,068	0.0%	4.0%	4.3%
American Airlines	36,018	40,477	-11.0%	466,050	538,603	-13.5%	11.7%	14.3%
American Express Carriers	4,928	4,344	13.4%	55,165	34,532	59.8%	1.4%	0.9%
American System Total	40,946	44,821	-8.6%	521,215	573,135	-9.1%	13.1%	15.2%
Continental Airlines	38,558	42,234	-8.7%	514,215	530,647	-3.1%	12.9%	14.1%
Continental Express Carriers	1,987	2,131	-6.8%	33,461	31,690	5.6%	0.8%	0.8%
Continental System Total	40,545	44,365	-8.6%	547,676	562,337	-2.6%	13.8%	14.9%
Delta Air Lines	40,487	33,796	19.8%	423,814	364,882	16.2%	10.7%	9.7%
Delta Express Carriers	5,219	7,353	-29.0%	85,907	103,214	-16.8%	2.2%	2.7%
Delta System Total	45,706	41,149	11.1%	509,721	468,096	8.9%	12.8%	12.4%
ExpressJet	0	10,306	-100.0%	81,462	80,133	2%	2.1%	2.1%
JetBlue	11,723	7,558	55.1%	124,528	89,169	39.7%	3.1%	2.4%
Northwest	11,421	11,503	-0.7%	159,756	175,863	-9.2%	4.0%	4.7%
Southwest	96,284	85,927	12.1%	1,127,749	955,084	18.1%	28.4%	25.4%
United Airlines	26,030	25,466	2.2%	301,161	282,703	6.5%	7.6%	7.5%
United Express Carriers	4,792	2,997	59.9%	53,602	55,946	-4.2%	1.3%	1.5%
United System Total	30,822	28,463	8.3%	354,763	338,649	4.8%	8.9%	9.0%
US Airways	22,573	19,149	17.9%	269,845	283,856	-4.9%	6.8%	7.5%
US Airways Express Carriers	8,054	8,107	-0.7%	102,255	64,730	58.0%	2.6%	1.7%
US Airways System Total	30,627	27,256	12.4%	372,100	348,586	6.7%	9.4%	9.3%
<b>Total Domestic Scheduled</b>	<b>320,725</b>	<b>314,792</b>	<b>1.9%</b>	<b>3,956,381</b>	<b>3,753,120</b>	<b>5.4%</b>	<b>99.6%</b>	<b>99.7%</b>
<b>Charter</b>								
Domestic	580	416	39.4%	8,394	4,923	70.5%	0.2%	0.1%
International	1,501	416	260.8%	6,455	7,849	-17.8%	0.2%	0.2%
<b>Total Charter</b>	<b>2,081</b>	<b>832</b>	<b>150.1%</b>	<b>14,849</b>	<b>12,772</b>	<b>16.3%</b>	<b>0.4%</b>	<b>0.3%</b>
<b>Total Deplanned</b>	<b>322,806</b>	<b>315,624</b>	<b>2.3%</b>	<b>3,971,230</b>	<b>3,765,892</b>	<b>5.5%</b>		

**LOUIS ARMSTRONG NEW ORLEANS INTERNATIONAL AIRPORT**

**Summary of Freight and Mail Activity (Enplaned & Deplaned Combined)**

	Month			Year-to-Date			Market Share	
	Dec-08	Dec-07	% Change	2008	2007	% Change	2008	2007
<b>Domestic Freight &amp; Mail</b>								
AirTran Airways	0	0	0.0%	0	497,312	-100.0%	0.0%	0.5%
American Airlines	20,002	22,141	-9.7%	90,847	104,934	-13.4%	0.1%	0.1%
Continental Airlines	389,780	623,935	-37.5%	5,081,382	6,153,199	-17.4%	5.1%	6.2%
Delta Air Lines	168,874	343,938	-50.9%	2,118,295	2,418,652	-12.4%	2.1%	2.4%
Delta Express Carriers	750	4,343	-82.7%	23,878	54,903	-56.5%	0.0%	0.1%
Northwest	16,347	8,081	102.3%	170,155	108,351	57.0%	0.2%	0.1%
Southwest Airlines	599,152	669,357	-10.5%	6,834,139	8,208,514	-16.7%	6.9%	8.3%
United Airlines	11,292	62,360	-81.9%	319,117	429,657	-25.7%	0.3%	0.4%
US Airways	25,240	32,934	-23.4%	200,126	398,202	-49.7%	0.2%	0.4%
US Airways Express Carriers	970	122	695.1%	19,764	4,263	363.6%	0.0%	0.0%
ABX Air Inc.	63,828	1,095,722	-94.2%	7,242,331	8,792,363	-17.6%	7.3%	8.9%
DHL	280,281	1,628,764	-82.8%	11,732,476	15,820,492	-25.8%	11.8%	16.0%
Federal Express	5,974,799	3,295,486	81.3%	45,943,915	34,148,963	34.5%	46.1%	34.5%
UPS	1,739,044	1,881,089	-7.6%	19,793,180	21,494,347	-7.9%	19.8%	21.7%
<b>Total Domestic</b>	<b>9,290,359</b>	<b>9,668,272</b>	<b>-3.9%</b>	<b>99,569,605</b>	<b>98,634,152</b>	<b>0.9%</b>	<b>99.8%</b>	<b>99.7%</b>
<b>International Freight &amp; Mail</b>								
Delta Air Lines	0	19,723	-100.0%	183,135	300,067	-39.0%	0.2%	0.3%
<b>Total International</b>	<b>0</b>	<b>19,723</b>	<b>-100.0%</b>	<b>183,135</b>	<b>300,067</b>	<b>-39.0%</b>	<b>0.2%</b>	<b>0.3%</b>
<b>Total Freight and Mail</b>	<b>9,290,359</b>	<b>9,687,995</b>	<b>-4.1%</b>	<b>99,752,740</b>	<b>98,934,219</b>	<b>0.8%</b>		
Total in Metric Tonnes	4,213.18	4,393.51		45,237.87	44,866.67			

**Summary of Air Freight and Mail (lbs.)**

Domestic Enplaned	4,127,044	4,089,345	0.9%	42,731,328	41,436,147	3.1%	42.8%	41.9%
Domestic Deplaned	5,163,315	5,578,927	-7.4%	56,838,277	57,198,005	-0.6%	57.0%	57.8%
International Enplaned	0	2,947	-100.0%	39,465	73,318	-46.2%	0.0%	0.1%
International Deplaned	0	16,776	-100.0%	143,670	226,749	-36.6%	0.1%	0.2%
<b>Total</b>	<b>9,290,359</b>	<b>9,687,995</b>	<b>-4.1%</b>	<b>99,752,740</b>	<b>98,934,219</b>	<b>0.8%</b>		

Note: All freight and express on international waybills is reported as International even if on domestic flights.

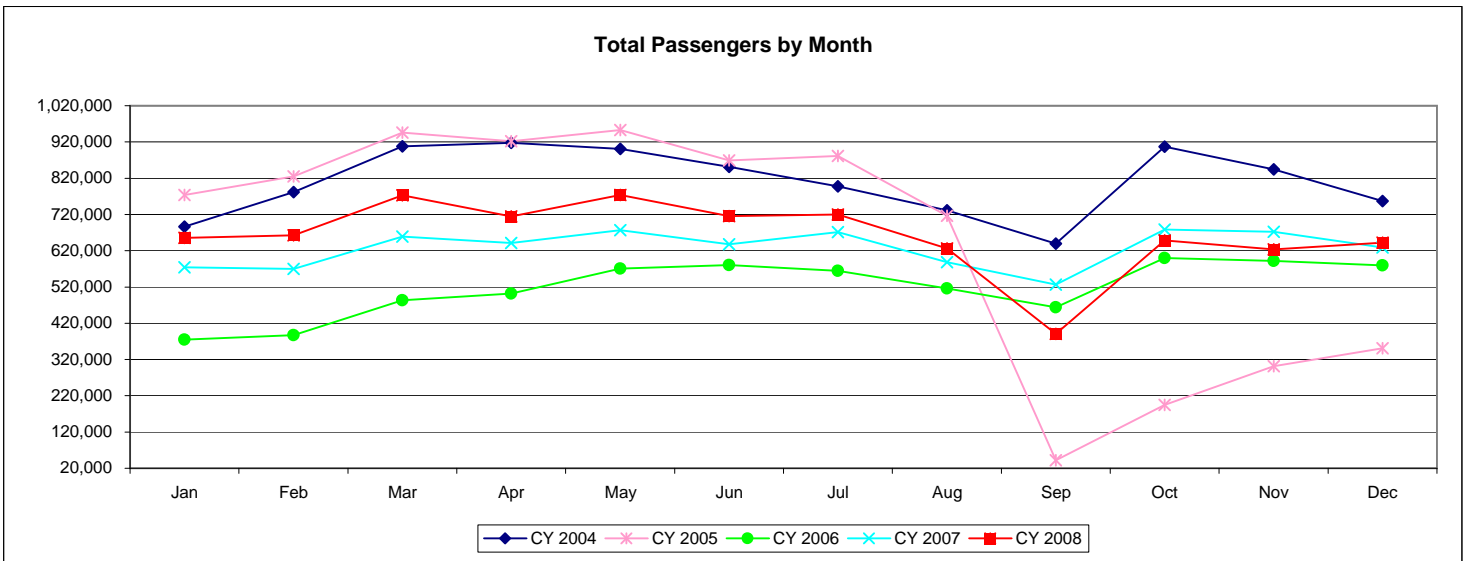
LOUIS ARMSTRONG NEW ORLEANS INTERNATIONAL AIRPORT

Summary of Passenger Statistics

	Month			Year-to-Date			Market Share	
	Dec-08	Dec-07	% Change	2008	2007	% Change	2008	2007
<b>Enplaned Passengers</b>								
Domestic Scheduled	317,658	312,647	1.6%	3,958,203	3,752,700	5.5%	49.8%	49.8%
Domestic Charter	487	825	-41.0%	9,766	6,935	40.8%	0.1%	0.1%
International Charter	1,012	260	289.2%	5,198	6,370	-18.4%	0.1%	0.1%
<b>Deplaned Passengers</b>								
Domestic Scheduled	320,725	314,792	1.9%	3,956,381	3,753,120	5.4%	49.8%	49.8%
Domestic Charter	580	416	39.4%	8,394	4,923	70.5%	0.1%	0.1%
International Charter	1,501	416	260.8%	6,455	7,849	-17.8%	0.1%	0.1%
<b>Total Passengers</b>								
Domestic Scheduled	638,383	627,439	1.7%	7,914,584	7,505,820	5.4%	99.6%	99.7%
Domestic Charter	1,067	1,241	-14.0%	18,160	11,858	53.1%	0.2%	0.2%
International Charter	2,513	676	271.7%	11,653	14,219	-18.0%	0.1%	0.2%
<b>Total</b>	<b>641,963</b>	<b>629,356</b>	<b>2.0%</b>	<b>7,944,397</b>	<b>7,531,897</b>	<b>5.5%</b>		

Summary of Aircraft Operations

Arrival Operations								
Domestic Passenger Airlines	3,617	3,859	-6.3%	44,991	41,540	8.3%	96.8%	96.6%
Int'l Passenger Airlines	0	0	0.0%	0	0	0.0%	0.0%	0.0%
Domestic Charter Airlines	3	4	-25.0%	121	48	152.1%	0.3%	0.1%
Int'l Charter Airlines	7	3	133.3%	26	50	-48.0%	0.1%	0.1%
All Cargo Airlines	102	137	-25.5%	1,348	1,356	-0.6%	2.9%	3.2%
<b>Total</b>	<b>3,729</b>	<b>4,003</b>	<b>-6.8%</b>	<b>46,486</b>	<b>42,994</b>	<b>8.1%</b>		
Departure Operations								
Domestic Passenger Airlines	3,622	3,863	-6.2%	45,008	41,534	8.4%	96.8%	96.6%
Int'l Passenger Airlines	0	0	0.0%	0	0	0.0%	0.0%	0.0%
Domestic Charter Airlines	3	7	-57.1%	119	64	85.9%	0.3%	0.1%
Int'l Charter Airlines	4	2	100.0%	26	33	-21.2%	0.1%	0.1%
All Cargo Airlines	102	137	-25.5%	1,350	1,358	-0.6%	2.9%	3.2%
<b>Total</b>	<b>3,731</b>	<b>4,009</b>	<b>-6.9%</b>	<b>46,503</b>	<b>42,989</b>	<b>8.2%</b>		





**LOUIS ARMSTRONG NEW ORLEANS INTERNATIONAL AIRPORT**

**Summary of Enplaned Passengers by Airline**

	Month		%	Year-to-Date		%	Market Share	
	Nov-08	Nov-07	Change	2008	2007	Change	2008	2007
<b>Domestic Scheduled</b>								
AirTran Airways	14,380	14,407	-0.2%	145,252	151,391	0.0%	4.0%	4.4%
American Airlines	36,013	41,572	-13.4%	427,283	494,220	-13.5%	11.7%	14.3%
American Express Carriers	4,526	4,692	-3.5%	53,233	30,555	74.2%	1.5%	0.9%
American System Total	40,539	46,264	-12.4%	480,516	524,775	-8.4%	13.2%	15.2%
Continental Airlines	41,884	47,361	-11.6%	481,655	495,470	-2.8%	13.2%	14.4%
Continental Express Carriers	2,326	2,049	13.5%	33,275	30,814	8.0%	0.9%	0.9%
Continental System Total	44,210	49,410	-10.5%	514,930	526,284	-2.2%	14.1%	15.2%
Delta Air Lines	42,148	37,226	13.2%	387,408	326,244	18.7%	10.6%	9.5%
Delta Express Carriers	5,058	6,798	-25.6%	77,978	98,671	-21.0%	2.1%	2.9%
Delta System Total	47,206	44,024	7.2%	465,386	424,915	9.5%	12.7%	12.3%
ExpressJet	0	11,451	-100.0%	82,784	69,532	19%	2.3%	2.0%
JetBlue	10,664	7,143	49.3%	111,036	83,234	33.4%	3.0%	2.4%
Northwest	13,156	13,273	-0.9%	147,264	161,563	-8.9%	4.0%	4.7%
Southwest	90,941	88,204	3.1%	1,034,823	870,206	18.9%	28.3%	25.2%
United Airlines	23,262	27,226	-14.6%	276,160	255,887	7.9%	7.6%	7.4%
United Express Carriers	4,815	3,434	40.2%	46,133	52,173	-11.6%	1.3%	1.5%
United System Total	28,077	30,660	-8.4%	322,293	308,060	4.6%	8.8%	8.9%
US Airways	21,640	22,810	-5.1%	241,103	268,523	-10.2%	6.6%	7.8%
US Airways Express Carriers	7,219	5,298	36.3%	95,158	51,570	84.5%	2.6%	1.5%
US Airways System Total	28,859	28,108	2.7%	336,261	320,093	5.1%	9.2%	9.3%
<b>Total Domestic Scheduled</b>	<b>318,032</b>	<b>332,944</b>	<b>-4.5%</b>	<b>3,640,545</b>	<b>3,440,053</b>	<b>5.8%</b>	<b>99.6%</b>	<b>99.6%</b>
<b>Charter</b>								
Domestic	291	824	-64.7%	9,279	6,110	51.9%	0.3%	0.2%
International	130	2,827	-95.4%	4,186	6,110	-31.5%	0.1%	0.2%
<b>Total Charter</b>	<b>421</b>	<b>3,651</b>	<b>-88.5%</b>	<b>13,465</b>	<b>12,220</b>	<b>10.2%</b>	<b>0.4%</b>	<b>0.4%</b>
<b>Total Enplaned</b>	<b>318,453</b>	<b>336,595</b>	<b>-5.4%</b>	<b>3,654,010</b>	<b>3,452,273</b>	<b>5.8%</b>		

**LOUIS ARMSTRONG NEW ORLEANS INTERNATIONAL AIRPORT**

**Summary of Deplanned Passengers by Airline**

	Month		%	Year-to-Date		%	Market Share	
	Nov-08	Nov-07	Change	2008	2007	Change	2008	2007
<b>Domestic Scheduled</b>								
AirTran Airways	13,434	13,931	-3.6%	144,760	148,624	0.0%	4.0%	4.3%
American Airlines	34,127	40,929	-16.6%	430,032	498,126	-13.7%	11.8%	14.4%
American Express Carriers	4,632	4,702	-1.5%	50,237	30,188	66.4%	1.4%	0.9%
American System Total	38,759	45,631	-15.1%	480,269	528,314	-9.1%	13.2%	15.3%
Continental Airlines	40,275	46,671	-13.7%	475,657	488,413	-2.6%	13.0%	14.2%
Continental Express Carriers	1,686	2,054	-17.9%	31,474	29,559	6.5%	0.9%	0.9%
Continental System Total	41,961	48,725	-13.9%	507,131	517,972	-2.1%	13.9%	15.0%
Delta Air Lines	39,681	37,670	5.3%	383,327	331,086	15.8%	10.5%	9.6%
Delta Express Carriers	4,848	6,748	-28.2%	80,688	95,861	-15.8%	2.2%	2.8%
Delta System Total	44,529	44,418	0.2%	464,015	426,947	8.7%	12.7%	12.4%
ExpressJet	0	11,475	-100.0%	81,462	69,827	17%	2.2%	2.0%
JetBlue	10,161	6,921	46.8%	112,805	81,611	38.2%	3.1%	2.4%
Northwest	12,718	13,510	-5.9%	148,335	164,360	-9.7%	4.1%	4.8%
Southwest	88,002	89,160	-1.3%	1,031,465	869,157	18.7%	28.3%	25.2%
United Airlines	22,975	26,903	-14.6%	275,131	257,237	7.0%	7.5%	7.5%
United Express Carriers	4,634	3,220	43.9%	48,810	52,949	-7.8%	1.3%	1.5%
United System Total	27,609	30,123	-8.3%	323,941	310,186	4.4%	8.9%	9.0%
US Airways	20,913	21,965	-4.8%	247,272	264,707	-6.6%	6.8%	7.7%
US Airways Express Carriers	6,366	5,968	6.7%	94,201	56,623	66.4%	2.6%	1.6%
US Airways System Total	27,279	27,933	-2.3%	341,473	321,330	6.3%	9.4%	9.3%
<b>Total Domestic Scheduled</b>	<b>304,452</b>	<b>331,827</b>	<b>-8.2%</b>	<b>3,635,656</b>	<b>3,438,328</b>	<b>5.7%</b>	<b>99.7%</b>	<b>99.7%</b>
<b>Charter</b>								
Domestic	221	86	157.0%	7,814	4,507	73.4%	0.2%	0.1%
International	146	3,435	-95.7%	4,954	7,433	-33.4%	0.1%	0.2%
<b>Total Charter</b>	<b>367</b>	<b>3,521</b>	<b>-89.6%</b>	<b>12,768</b>	<b>11,940</b>	<b>6.9%</b>	<b>0.3%</b>	<b>0.3%</b>
<b>Total Deplanned</b>	<b>304,819</b>	<b>335,348</b>	<b>-9.1%</b>	<b>3,648,424</b>	<b>3,450,268</b>	<b>5.7%</b>		

**LOUIS ARMSTRONG NEW ORLEANS INTERNATIONAL AIRPORT**

**Summary of Freight and Mail Activity (Enplaned & Deplaned Combined)**

	Month			Year-to-Date			Market Share	
	Nov-08	Nov-07	% Change	2008	2007	% Change	2008	2007
<b>Domestic Freight &amp; Mail</b>								
AirTran Airways	0	0	0.0%	0	497,312	-100.0%	0.0%	0.6%
American Airlines	6,616	5,387	22.8%	70,845	82,793	-14.4%	0.1%	0.1%
Continental Airlines	673,846	601,725	12.0%	4,691,602	5,529,264	-15.1%	5.2%	6.2%
Delta Air Lines	177,775	165,125	7.7%	1,949,421	2,074,714	-6.0%	2.2%	2.3%
Delta Express Carriers	255	5,227	-95.1%	23,128	50,560	-54.3%	0.0%	0.1%
Northwest	15,867	10,407	52.5%	153,808	100,270	53.4%	0.2%	0.1%
Southwest Airlines	603,479	647,075	-6.7%	6,234,987	7,539,157	-17.3%	6.9%	8.4%
United Airlines	19,682	40,559	-51.5%	307,825	367,297	-16.2%	0.3%	0.4%
US Airways	22,860	0	100.0%	174,886	365,268	-52.1%	0.2%	0.4%
US Airways Express Carriers	1,088	100	988.0%	18,794	4,141	353.9%	0.0%	0.0%
ABX Air Inc.	66,342	0	100.0%	7,178,503	7,696,641	-6.7%	7.9%	8.6%
DHL	734,693	1,497,489	-50.9%	11,452,195	14,191,728	-19.3%	12.7%	15.9%
Federal Express	5,661,027	3,055,372	85.3%	39,969,116	30,853,477	29.5%	44.2%	34.6%
UPS	1,480,068	1,891,796	-21.8%	18,054,136	19,613,258	-7.9%	20.0%	22.0%
<b>Total Domestic</b>	<b>9,463,598</b>	<b>7,920,262</b>	<b>19.5%</b>	<b>90,279,246</b>	<b>88,965,880</b>	<b>1.5%</b>	<b>99.8%</b>	<b>99.7%</b>
<b>International Freight &amp; Mail</b>								
Delta Air Lines	0	25,964	-100.0%	183,135	280,344	-34.7%	0.2%	0.3%
<b>Total International</b>	<b>0</b>	<b>25,964</b>	<b>-100.0%</b>	<b>183,135</b>	<b>280,344</b>	<b>-34.7%</b>	<b>0.2%</b>	<b>0.3%</b>
<b>Total Freight and Mail</b>	<b>9,463,598</b>	<b>7,946,226</b>	<b>19.1%</b>	<b>90,462,381</b>	<b>89,246,224</b>	<b>1.4%</b>		
Total in Metric Tonnes	4,291.74	3,603.61		41,024.69	40,473.16			

**Summary of Air Freight and Mail (lbs.)**

Domestic Enplaned	4,577,862	3,214,247	42.4%	38,604,284	37,346,802	3.4%	42.7%	41.8%
Domestic Deplaned	4,885,736	4,706,015	3.8%	51,674,962	51,619,078	0.1%	57.1%	57.8%
International Enplaned	0	1,451	-100.0%	39,465	70,371	-43.9%	0.0%	0.1%
International Deplaned	0	24,513	-100.0%	143,670	209,973	-31.6%	0.2%	0.2%
<b>Total</b>	<b>9,463,598</b>	<b>7,946,226</b>	<b>19.1%</b>	<b>90,462,381</b>	<b>89,246,224</b>	<b>1.4%</b>		

Note: All freight and express on international waybills is reported as International even if on domestic flights.

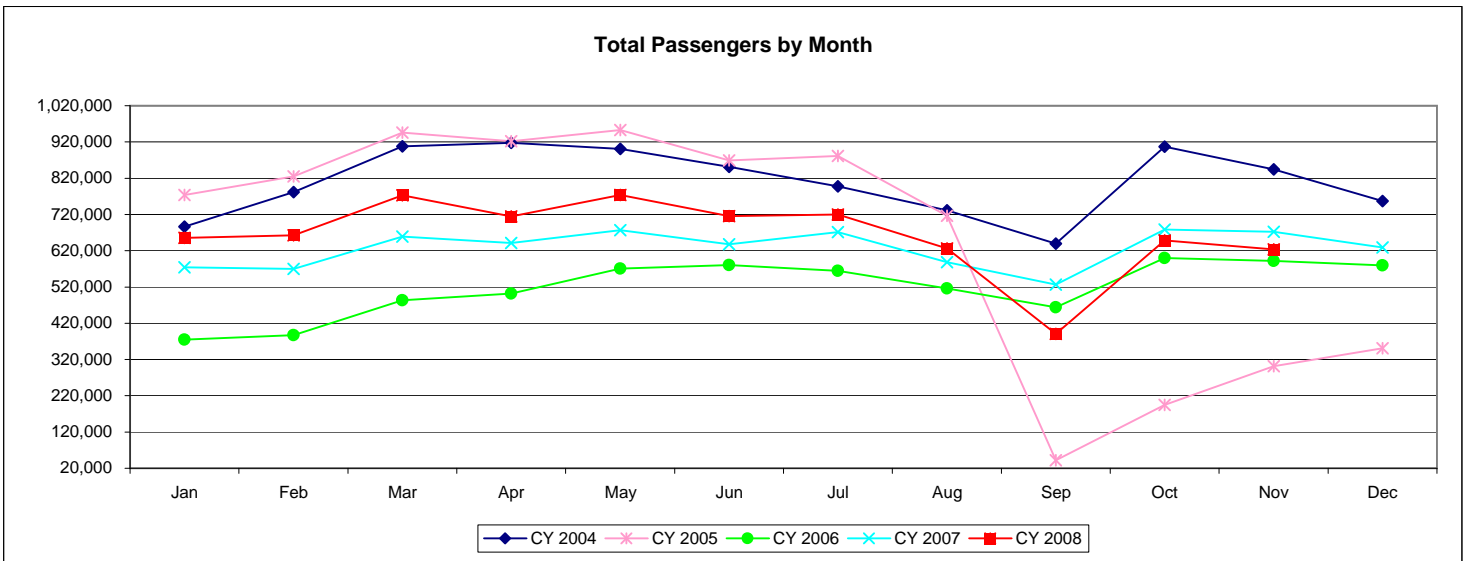
# LOUIS ARMSTRONG NEW ORLEANS INTERNATIONAL AIRPORT

## Summary of Passenger Statistics

	Month		%	Year-to-Date		%	Market Share	
	Nov-08	Nov-07	Change	2008	2007	Change	2008	2007
<b>Enplaned Passengers</b>								
Domestic Scheduled	318,032	332,944	-4.5%	3,640,545	3,440,053	5.8%	49.9%	49.8%
Domestic Charter	291	824	-64.7%	9,279	6,110	51.9%	0.1%	0.1%
International Charter	130	2,827	-95.4%	4,186	6,110	-31.5%	0.1%	0.1%
<b>Deplaned Passengers</b>								
Domestic Scheduled	304,452	331,827	-8.2%	3,635,656	3,438,328	5.7%	49.8%	49.8%
Domestic Charter	221	86	157.0%	7,814	4,507	73.4%	0.1%	0.1%
International Charter	146	3,435	-95.7%	4,954	7,433	-33.4%	0.1%	0.1%
<b>Total Passengers</b>								
Domestic Scheduled	622,484	664,771	-6.4%	7,276,201	6,878,381	5.8%	99.6%	99.6%
Domestic Charter	512	910	-43.7%	17,093	10,617	61.0%	0.2%	0.2%
International Charter	276	6,262	-95.6%	9,140	13,543	-32.5%	0.1%	0.2%
<b>Total</b>	<b>623,272</b>	<b>671,943</b>	<b>-7.2%</b>	<b>7,302,434</b>	<b>6,902,541</b>	<b>5.8%</b>		

## Summary of Aircraft Operations

Arrival Operations								
Domestic Passenger Airlines	3,552	3,807	-6.7%	41,374	37,681	9.8%	96.8%	96.6%
Int'l Passenger Airlines	0	0	0.0%	0	0	0.0%	0.0%	0.0%
Domestic Charter Airlines	5	1	400.0%	118	44	168.2%	0.3%	0.1%
Int'l Charter Airlines	1	20	-95.0%	19	47	-59.6%	0.0%	0.1%
All Cargo Airlines	125	107	16.8%	1,246	1,219	2.2%	2.9%	3.1%
<b>Total</b>	<b>3,683</b>	<b>3,935</b>	<b>-6.4%</b>	<b>42,757</b>	<b>38,991</b>	<b>9.7%</b>		
Departure Operations								
Domestic Passenger Airlines	3,557	3,805	-6.5%	41,386	37,671	9.9%	96.8%	96.6%
Int'l Passenger Airlines	0	0	0.0%	0	0	0.0%	0.0%	0.0%
Domestic Charter Airlines	5	6	-16.7%	116	57	103.5%	0.3%	0.1%
Int'l Charter Airlines	1	16	-93.8%	22	31	-29.0%	0.1%	0.1%
All Cargo Airlines	125	111	12.6%	1,248	1,221	2.2%	2.9%	3.1%
<b>Total</b>	<b>3,688</b>	<b>3,938</b>	<b>-6.3%</b>	<b>42,772</b>	<b>38,980</b>	<b>9.7%</b>		



**LOUIS ARMSTRONG NEW ORLEANS INTERNATIONAL AIRPORT**

**Summary of Enplaned Passengers by Airline**

	Month		%	Year-to-Date		%	Market Share	
	Oct-08	Oct-07	Change	2008	2007	Change	2008	2007
<b>Domestic Scheduled</b>								
AirTran Airways	13,677	15,578	-12.2%	130,872	136,984	0.0%	3.9%	4.4%
American Airlines	35,451	43,154	-17.9%	391,270	452,648	-13.6%	11.7%	14.5%
American Express Carriers	4,385	4,745	-7.6%	48,707	25,863	88.3%	1.5%	0.8%
American System Total	39,836	47,899	-16.8%	439,977	478,511	-8.1%	13.2%	15.4%
Continental Airlines	45,613	50,116	-9.0%	439,771	448,109	-1.9%	13.2%	14.4%
Continental Express Carriers	2,367	2,228	6.2%	30,949	28,765	7.6%	0.9%	0.9%
Continental System Total	47,980	52,344	-8.3%	470,720	476,874	-1.3%	14.1%	15.3%
Delta Air Lines	44,237	39,084	13.2%	345,260	289,018	19.5%	10.4%	9.3%
Delta Express Carriers	6,751	7,010	-3.7%	72,920	91,873	-20.6%	2.2%	2.9%
Delta System Total	50,988	46,094	10.6%	418,180	380,891	9.8%	12.5%	12.2%
ExpressJet	0	12,762	-100.0%	82,784	58,081	43%	2.5%	1.9%
JetBlue	11,292	7,963	41.8%	100,372	76,091	31.9%	3.0%	2.4%
Northwest	13,658	13,860	-1.5%	134,108	148,290	-9.6%	4.0%	4.8%
Southwest	95,915	80,390	19.3%	943,882	782,002	20.7%	28.3%	25.1%
United Airlines	19,953	23,420	-14.8%	252,898	228,661	10.6%	7.6%	7.3%
United Express Carriers	6,639	6,271	5.9%	41,318	48,739	-15.2%	1.2%	1.6%
United System Total	26,592	29,691	-10.4%	294,216	277,400	6.1%	8.8%	8.9%
US Airways	6,278	23,252	-73.0%	219,463	245,713	-10.7%	6.6%	7.9%
US Airways Express Carriers	8,500	5,703	49.0%	87,939	46,272	90.0%	2.6%	1.5%
US Airways System Total	14,778	28,955	-49.0%	307,402	291,985	5.3%	9.2%	9.4%
<b>Total Domestic Scheduled</b>	<b>314,716</b>	<b>335,536</b>	<b>-6.2%</b>	<b>3,322,513</b>	<b>3,107,109</b>	<b>6.9%</b>	<b>99.6%</b>	<b>99.7%</b>
<b>Charter</b>								
Domestic	1,142	729	56.7%	8,988	5,286	70.0%	0.3%	0.2%
International	130	0	100.0%	4,056	3,283	23.5%	0.1%	0.1%
<b>Total Charter</b>	<b>1,272</b>	<b>729</b>	<b>74.5%</b>	<b>13,044</b>	<b>8,569</b>	<b>52.2%</b>	<b>0.4%</b>	<b>0.3%</b>
<b>Total Enplaned</b>	<b>315,988</b>	<b>336,265</b>	<b>-6.0%</b>	<b>3,335,557</b>	<b>3,115,678</b>	<b>7.1%</b>		

LOUIS ARMSTRONG NEW ORLEANS INTERNATIONAL AIRPORT

Summary of Deplanned Passengers by Airline

	Month		%	Year-to-Date		%	Market Share	
	Oct-08	Oct-07	Change	2008	2007	Change	2008	2007
<b>Domestic Scheduled</b>								
AirTran Airways	14,203	15,702	-9.5%	131,326	134,693	0.0%	3.9%	4.3%
American Airlines	37,039	44,043	-15.9%	395,905	457,197	-13.4%	11.8%	14.7%
American Express Carriers	4,404	4,989	-11.7%	45,605	25,486	78.9%	1.4%	0.8%
American System Total	41,443	49,032	-15.5%	441,510	482,683	-8.5%	13.2%	15.5%
Continental Airlines	47,123	49,780	-5.3%	435,382	441,742	-1.4%	13.0%	14.2%
Continental Express Carriers	2,168	2,153	0.7%	29,788	27,505	8.3%	0.9%	0.9%
Continental System Total	49,291	51,933	-5.1%	465,170	469,247	-0.9%	13.9%	15.1%
Delta Air Lines	44,553	40,492	10.0%	343,646	293,416	17.1%	10.3%	9.4%
Delta Express Carriers	7,697	7,015	9.7%	75,840	89,113	-14.9%	2.3%	2.9%
Delta System Total	52,250	47,507	10.0%	419,486	382,529	9.7%	12.5%	12.3%
ExpressJet	0	13,010	-100.0%	81,462	58,352	40%	2.4%	1.9%
JetBlue	11,971	7,986	49.9%	102,644	74,690	37.4%	3.1%	2.4%
Northwest	14,650	14,774	-0.8%	135,617	150,850	-10.1%	4.1%	4.8%
Southwest	98,073	80,904	21.2%	943,463	779,997	21.0%	28.2%	25.0%
United Airlines	20,518	24,428	-16.0%	252,156	230,334	9.5%	7.5%	7.4%
United Express Carriers	7,281	6,300	15.6%	44,176	49,729	-11.2%	1.3%	1.6%
United System Total	27,799	30,728	-9.5%	296,332	280,063	5.8%	8.9%	9.0%
US Airways	12,762	23,799	-46.4%	226,359	242,742	-6.7%	6.8%	7.8%
US Airways Express Carriers	8,808	6,189	42.3%	87,835	50,655	73.4%	2.6%	1.6%
US Airways System Total	21,570	29,988	-28.1%	314,194	293,397	7.1%	9.4%	9.4%
<b>Total Domestic Scheduled</b>	<b>331,250</b>	<b>341,564</b>	<b>-3.0%</b>	<b>3,331,204</b>	<b>3,106,501</b>	<b>7.2%</b>	<b>99.6%</b>	<b>99.7%</b>
<b>Charter</b>								
Domestic	1,160	554	109.4%	7,593	4,421	71.7%	0.2%	0.1%
International	146	66	121.2%	4,808	3,998	20.3%	0.1%	0.1%
<b>Total Charter</b>	<b>1,306</b>	<b>620</b>	<b>110.6%</b>	<b>12,401</b>	<b>8,419</b>	<b>47.3%</b>	<b>0.4%</b>	<b>0.3%</b>
<b>Total Deplanned</b>	<b>332,556</b>	<b>342,184</b>	<b>-2.8%</b>	<b>3,343,605</b>	<b>3,114,920</b>	<b>7.3%</b>		

**LOUIS ARMSTRONG NEW ORLEANS INTERNATIONAL AIRPORT**

**Summary of Freight and Mail Activity (Enplaned & Deplaned Combined)**

	Month		%	Year-to-Date		%	Market Share	
	Oct-08	Oct-07	Change	2008	2007	Change	2008	2007
<b>Domestic Freight &amp; Mail</b>								
AirTran Airways	0	46,476	-100.0%	0	497,312	-100.0%	0.0%	0.6%
American Airlines	290	5,459	-94.7%	64,229	77,406	-17.0%	0.1%	0.1%
Continental Airlines	318,799	591,091	-46.1%	4,017,756	4,927,539	-18.5%	5.0%	6.1%
Delta Air Lines	140,526	247,826	-43.3%	1,771,646	1,909,589	-7.2%	2.2%	2.3%
Delta Express Carriers	486	5,019	-90.3%	22,873	45,333	-49.5%	0.0%	0.1%
Northwest	16,501	13,365	23.5%	137,941	89,863	53.5%	0.2%	0.1%
Southwest Airlines	566,905	612,148	-7.4%	5,631,508	6,892,082	-18.3%	7.0%	8.5%
United Airlines	21,768	58,435	-62.7%	288,143	326,738	-11.8%	0.4%	0.4%
US Airways	19,040	24,072	-20.9%	152,026	365,268	-58.4%	0.2%	0.4%
US Airways Express Carriers	1,454	631	130.4%	17,706	4,041	338.2%	0.0%	0.0%
ABX Air Inc.	456,912	1,197,936	-61.9%	7,112,161	7,696,641	-7.6%	8.8%	9.5%
DHL	914,260	1,709,935	-46.5%	10,717,502	12,694,239	-15.6%	13.2%	15.6%
Federal Express	6,602,506	3,208,952	105.8%	34,308,089	27,798,105	23.4%	42.4%	34.2%
UPS	1,712,507	1,911,517	-10.4%	16,574,068	17,721,462	-6.5%	20.5%	21.8%
<b>Total Domestic</b>	<b>10,771,954</b>	<b>9,632,862</b>	<b>11.8%</b>	<b>80,815,648</b>	<b>81,045,618</b>	<b>-0.3%</b>	<b>99.8%</b>	<b>99.7%</b>
<b>International Freight &amp; Mail</b>								
Delta Air Lines	0	26,591	-100.0%	183,135	254,380	-28.0%	0.2%	0.3%
<b>Total International</b>	<b>0</b>	<b>26,591</b>	<b>-100.0%</b>	<b>183,135</b>	<b>254,380</b>	<b>-28.0%</b>	<b>0.2%</b>	<b>0.3%</b>
<b>Total Freight and Mail</b>	<b>10,771,954</b>	<b>9,659,453</b>	<b>11.5%</b>	<b>80,998,783</b>	<b>81,299,998</b>	<b>-0.4%</b>		
Total in Metric Tonnes	4,885.08	4,380.56		36,732.95	36,869.55			

**Summary of Air Freight and Mail (lbs.)**

Domestic Enplaned	5,029,255	3,874,924	29.8%	34,026,422	34,132,555	-0.3%	42.0%	42.0%
Domestic Deplaned	5,742,699	5,757,938	-0.3%	46,789,226	46,913,063	-0.3%	57.8%	57.7%
International Enplaned	0	5,125	-100.0%	39,465	68,920	-42.7%	0.0%	0.1%
International Deplaned	0	21,466	-100.0%	143,670	185,460	-22.5%	0.2%	0.2%
<b>Total</b>	<b>10,771,954</b>	<b>9,659,453</b>	<b>11.5%</b>	<b>80,998,783</b>	<b>81,299,998</b>	<b>-0.4%</b>		

Note: All freight and express on international waybills is reported as International even if on domestic flights.

## LOUIS ARMSTRONG NEW ORLEANS INTERNATIONAL AIRPORT

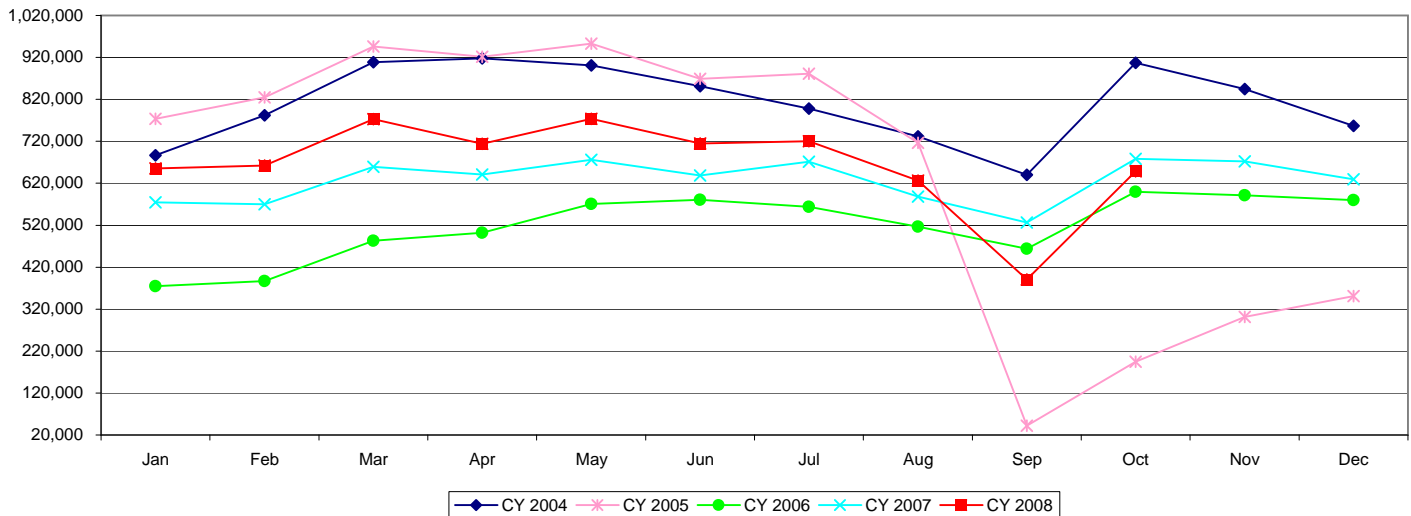
### Summary of Passenger Statistics

	Month		%	Year-to-Date		%	Market Share	
	Oct-08	Oct-07	Change	2008	2007	Change	2008	2007
<b>Enplaned Passengers</b>								
Domestic Scheduled	314,716	335,536	-6.2%	3,322,513	3,107,109	6.9%	49.7%	49.9%
Domestic Charter	1,142	729	56.7%	8,988	5,286	70.0%	0.1%	0.1%
International Charter	130	0	100.0%	4,056	3,283	23.5%	0.1%	0.1%
<b>Deplaned Passengers</b>								
Domestic Scheduled	331,250	341,564	-3.0%	3,331,204	3,106,501	7.2%	49.9%	49.9%
Domestic Charter	1,160	554	109.4%	7,593	4,421	71.7%	0.1%	0.1%
International Charter	146	66	121.2%	4,808	3,998	20.3%	0.1%	0.1%
<b>Total Passengers</b>								
Domestic Scheduled	645,966	677,100	-4.6%	6,653,717	6,213,610	7.1%	99.6%	99.7%
Domestic Charter	2,302	1,283	79.4%	16,581	9,707	70.8%	0.2%	0.2%
International Charter	276	66	318.2%	8,864	7,281	21.7%	0.1%	0.1%
<b>Total</b>	<b>648,544</b>	<b>678,449</b>	<b>-4.4%</b>	<b>6,679,162</b>	<b>6,230,598</b>	<b>7.2%</b>		

### Summary of Aircraft Operations

<b>Arrival Operations</b>								
Domestic Passenger Airlines	3,690	3,779	-2.4%	37,822	33,874	11.7%	96.8%	96.6%
Domestic Charter Airlines	14	6	133.3%	113	43	162.8%	0.3%	0.1%
Int'l Charter Airlines	1	1	0.0%	18	27	-33.3%	0.0%	0.1%
All Cargo Airlines	146	131	11.5%	1,121	1,112	0.8%	2.9%	3.2%
<b>Total</b>	<b>3,851</b>	<b>3,917</b>	<b>-1.7%</b>	<b>39,074</b>	<b>35,056</b>	<b>11.5%</b>		
<b>Departure Operations</b>								
Domestic Passenger Airlines	3,698	3,772	-2.0%	37,829	33,866	11.7%	96.8%	96.6%
Domestic Charter Airlines	14	8	75.0%	111	51	117.6%	0.3%	0.1%
Int'l Charter Airlines	1	0	100.0%	21	15	40.0%	0.1%	0.0%
All Cargo Airlines	145	131	10.7%	1,123	1,110	1.2%	2.9%	3.2%
<b>Total</b>	<b>3,858</b>	<b>3,911</b>	<b>-1.4%</b>	<b>39,084</b>	<b>35,042</b>	<b>11.5%</b>		

**Total Passengers by Month**





**LOUIS ARMSTRONG NEW ORLEANS INTERNATIONAL AIRPORT**

**Summary of Enplaned Passengers by Airline**

	Month		%	Year-to-Date		%	Market Share	
	Sep-08	Sep-07	Change	2008	2007	Change	2008	2007
<b>Domestic Scheduled</b>								
AirTran Airways	6,792	11,959	-43.2%	117,195	121,406	0.0%	3.9%	4.4%
American Airlines	20,070	32,219	-37.7%	355,819	409,494	-13.1%	11.8%	14.7%
American Express Carriers	2,415	3,792	-36.3%	44,322	21,118	109.9%	1.5%	0.8%
American System Total	22,485	36,011	-37.6%	400,141	430,612	-7.1%	13.3%	15.5%
Continental Airlines	23,623	38,736	-39.0%	394,158	397,993	-1.0%	13.1%	14.3%
Continental Express Carriers	1,336	2,119	-37.0%	28,582	26,537	7.7%	0.9%	1.0%
Continental System Total	24,959	40,855	-38.9%	422,740	424,530	-0.4%	14.0%	15.3%
Delta Air Lines	26,330	28,258	-6.8%	301,023	249,934	20.4%	10.0%	9.0%
Delta Express Carriers	3,270	7,197	-54.6%	66,169	84,863	-22.0%	2.2%	3.1%
Delta System Total	29,600	35,455	-16.5%	367,192	334,797	9.7%	12.2%	12.0%
ExpressJet	0	10,211	-100.0%	82,784	45,319	83%	2.7%	1.6%
JetBlue	6,963	6,719	3.6%	89,080	68,128	30.8%	3.0%	2.5%
Northwest	8,045	11,463	-29.8%	120,450	134,430	-10.4%	4.0%	4.8%
Southwest	53,336	67,808	-21.3%	847,967	701,612	20.9%	28.1%	25.2%
United Airlines	10,443	13,785	-24.2%	232,945	205,241	13.5%	7.7%	7.4%
United Express Carriers	4,207	4,777	-11.9%	34,679	42,468	-18.3%	1.1%	1.5%
United System Total	14,650	18,562	-21.1%	267,624	247,709	8.0%	8.9%	8.9%
US Airways	13,276	18,862	-29.6%	213,185	222,461	-4.2%	7.1%	8.0%
US Airways Express Carriers	5,560	4,669	19.1%	79,439	40,569	95.8%	2.6%	1.5%
US Airways System Total	18,836	23,531	-20.0%	292,624	263,030	11.3%	9.7%	9.5%
<b>Total Domestic Scheduled</b>	<b>185,666</b>	<b>262,574</b>	<b>-29.3%</b>	<b>3,007,797</b>	<b>2,771,573</b>	<b>8.5%</b>	<b>99.6%</b>	<b>99.7%</b>
<b>Charter</b>								
Domestic	124	1,512	-91.8%	7,846	4,557	72.2%	0.3%	0.2%
International	0	0	0.0%	3,926	3,283	19.6%	0.1%	0.1%
<b>Total Charter</b>	<b>124</b>	<b>1,512</b>	<b>-91.8%</b>	<b>11,772</b>	<b>7,840</b>	<b>50.2%</b>	<b>0.4%</b>	<b>0.3%</b>
<b>Total Enplaned</b>	<b>185,790</b>	<b>264,086</b>	<b>-29.6%</b>	<b>3,019,569</b>	<b>2,779,413</b>	<b>8.6%</b>		

**LOUIS ARMSTRONG NEW ORLEANS INTERNATIONAL AIRPORT**

**Summary of Deplanned Passengers by Airline**

	Month		%	Year-to-Date		%	Market Share	
	Sep-08	Sep-07	Change	2008	2007	Change	2008	2007
<b>Domestic Scheduled</b>								
AirTran Airways	7,051	11,399	-38.1%	117,123	118,991	0.0%	3.9%	4.3%
American Airlines	21,700	32,732	-33.7%	358,866	413,154	-13.1%	11.9%	14.9%
American Express Carriers	2,645	3,698	-28.5%	41,201	20,497	101.0%	1.4%	0.7%
American System Total	24,345	36,430	-33.2%	400,067	433,651	-7.7%	13.3%	15.6%
Continental Airlines	25,447	37,177	-31.6%	388,259	391,962	-0.9%	12.9%	14.1%
Continental Express Carriers	1,078	1,937	-44.3%	27,620	25,352	8.9%	0.9%	0.9%
Continental System Total	26,525	39,114	-32.2%	415,879	417,314	-0.3%	13.8%	15.1%
Delta Air Lines	28,537	28,411	0.4%	299,093	252,924	18.3%	9.9%	9.1%
Delta Express Carriers	3,485	7,439	-53.2%	68,143	82,098	-17.0%	2.3%	3.0%
Delta System Total	32,022	35,850	-10.7%	367,236	335,022	9.6%	12.2%	12.1%
ExpressJet	0	9,959	-100.0%	81,462	45,342	80%	2.7%	1.6%
JetBlue	7,826	6,463	21.1%	90,673	66,704	35.9%	3.0%	2.4%
Northwest	9,936	11,993	-17.2%	120,967	136,076	-11.1%	4.0%	4.9%
Southwest	59,612	67,242	-11.3%	845,390	699,093	20.9%	28.1%	25.2%
United Airlines	11,173	14,526	-23.1%	231,638	205,906	12.5%	7.7%	7.4%
United Express Carriers	4,987	4,691	6.3%	36,895	43,429	-15.0%	1.2%	1.6%
United System Total	16,160	19,217	-15.9%	268,533	249,335	7.7%	8.9%	9.0%
US Airways	14,963	18,041	-17.1%	213,597	218,943	-2.4%	7.1%	7.9%
US Airways Express Carriers	6,036	5,068	19.1%	79,027	44,466	77.7%	2.6%	1.6%
US Airways System Total	20,999	23,109	-9.1%	292,624	263,409	11.1%	9.7%	9.5%
<b>Total Domestic Scheduled</b>	<b>204,476</b>	<b>260,776</b>	<b>-21.6%</b>	<b>2,999,954</b>	<b>2,764,937</b>	<b>8.5%</b>	<b>99.6%</b>	<b>99.7%</b>
<b>Charter</b>								
Domestic	546	1,614	-66.2%	6,433	3,867	66.4%	0.2%	0.1%
International	0	0	0.0%	4,662	3,932	18.6%	0.2%	0.1%
<b>Total Charter</b>	<b>546</b>	<b>1,614</b>	<b>-66.2%</b>	<b>11,095</b>	<b>7,799</b>	<b>42.3%</b>	<b>0.4%</b>	<b>0.3%</b>
<b>Total Deplanned</b>	<b>205,022</b>	<b>262,390</b>	<b>-21.9%</b>	<b>3,011,049</b>	<b>2,772,736</b>	<b>8.6%</b>		

**LOUIS ARMSTRONG NEW ORLEANS INTERNATIONAL AIRPORT**

**Summary of Freight and Mail Activity (Enplaned & Deplaned Combined)**

	Month		%	Year-to-Date		%	Market Share	
	Sep-08	Sep-07	Change	2008	2007	Change	2008	2007
<b>Domestic Freight &amp; Mail</b>								
AirTran Airways	0	44,603	-100.0%	0	450,836	-100.0%	0.0%	0.6%
American Airlines	21,881	423	5072.8%	63,939	71,947	-11.1%	0.1%	0.1%
Continental Airlines	381,633	352,426	8.3%	3,698,957	4,336,448	-14.7%	5.3%	6.1%
Delta Air Lines	135,296	129,841	4.2%	1,631,120	1,661,763	-1.8%	2.3%	2.3%
Delta Express Carriers	1,331	5,396	-75.3%	22,387	40,314	-44.5%	0.0%	0.1%
Northwest	13,001	9,587	35.6%	121,440	76,498	58.7%	0.2%	0.1%
Southwest Airlines	348,751	546,022	-36.1%	5,064,603	6,279,934	-19.4%	7.2%	8.8%
United Airlines	6,569	29,892	-78.0%	266,375	268,303	-0.7%	0.4%	0.4%
US Airways	17,698	25,802	-31.4%	132,986	341,196	-61.0%	0.2%	0.5%
US Airways Express Carriers	1,740	1,100	58.2%	16,252	3,410	376.6%	0.0%	0.0%
ABX Air Inc.	0	977,040	-100.0%	6,655,249	6,498,705	2.4%	9.5%	9.1%
DHL	955,914	1,533,956	-37.7%	9,803,242	10,984,304	-10.8%	14.0%	15.3%
Federal Express	3,121,538	2,843,897	9.8%	27,705,583	24,589,153	12.7%	39.5%	34.3%
UPS	1,371,068	1,727,726	-20.6%	14,861,561	15,809,945	-6.0%	21.2%	22.1%
<b>Total Domestic</b>	<b>6,376,420</b>	<b>8,227,711</b>	<b>-22.5%</b>	<b>70,043,694</b>	<b>71,412,756</b>	<b>-1.9%</b>	<b>99.7%</b>	<b>99.7%</b>
<b>International Freight &amp; Mail</b>								
Delta Air Lines	0	13,533	-100.0%	183,135	227,789	-19.6%	0.3%	0.3%
<b>Total International</b>	<b>0</b>	<b>13,533</b>	<b>-100.0%</b>	<b>183,135</b>	<b>227,789</b>	<b>-19.6%</b>	<b>0.3%</b>	<b>0.3%</b>
<b>Total Freight and Mail</b>	<b>6,376,420</b>	<b>8,241,244</b>	<b>-22.6%</b>	<b>70,226,829</b>	<b>71,640,545</b>	<b>-2.0%</b>		
Total in Metric Tonnes	2,891.71	3,737.40		31,847.87	32,488.99			

**Summary of Air Freight and Mail (lbs.)**

Domestic Enplaned	2,336,398	3,312,709	-29.5%	28,997,167	30,257,631	-4.2%	41.3%	42.2%
Domestic Deplaned	4,040,022	4,915,002	-17.8%	41,046,527	41,155,125	-0.3%	58.4%	57.4%
International Enplaned	0	1,750	-100.0%	39,465	63,795	-38.1%	0.1%	0.1%
International Deplaned	0	11,783	-100.0%	143,670	163,994	-12.4%	0.2%	0.2%
<b>Total</b>	<b>6,376,420</b>	<b>8,241,244</b>	<b>-22.6%</b>	<b>70,226,829</b>	<b>71,640,545</b>	<b>-2.0%</b>		

Note: All freight and express on international waybills is reported as International even if on domestic flights.

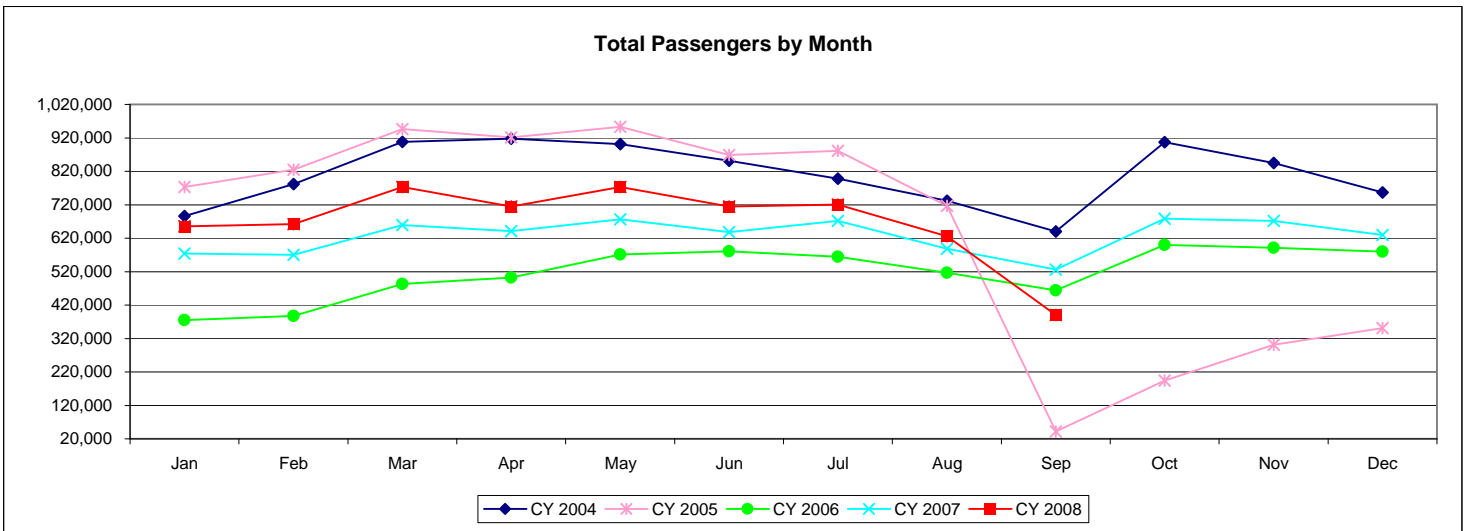
LOUIS ARMSTRONG NEW ORLEANS INTERNATIONAL AIRPORT

Summary of Passenger Statistics

	Month			Year-to-Date			Market Share	
	Sep-08	Sep-07	% Change	2008	2007	% Change	2008	2007
<b>Enplaned Passengers</b>								
Domestic Scheduled	185,666	262,574	-29.3%	3,007,797	2,771,573	8.5%	49.9%	49.9%
Domestic Charter	124	1,512	-91.8%	7,846	4,557	72.2%	0.1%	0.1%
International Charter	0	0	0.0%	3,926	3,283	19.6%	0.1%	0.1%
<b>Deplaned Passengers</b>								
Domestic Scheduled	204,476	260,776	-21.6%	2,999,954	2,764,937	8.5%	49.7%	49.8%
Domestic Charter	546	1,614	-66.2%	6,433	3,867	66.4%	0.1%	0.1%
International Charter	0	0	0.0%	4,662	3,932	18.6%	0.1%	0.1%
<b>Total Passengers</b>								
Domestic Scheduled	390,142	523,350	-25.5%	6,007,751	5,536,510	8.5%	99.6%	99.7%
Domestic Charter	670	3,126	-78.6%	14,279	8,424	69.5%	0.2%	0.2%
International Charter	0	0	0.0%	8,588	7,215	19.0%	0.1%	0.1%
<b>Total</b>	<b>390,812</b>	<b>526,476</b>	<b>-25.8%</b>	<b>6,030,618</b>	<b>5,552,149</b>	<b>8.6%</b>		

Summary of Aircraft Operations

Arrival Operations									
Domestic Passenger Airlines	2,879	3,482	-17.3%	34,132	30,095	13.4%	96.9%	96.6%	
Int'l Passenger Airlines	0	0	0.0%	0	0	0.0%	0.0%	0.0%	
Domestic Charter Airlines	3	14	-78.6%	99	37	167.6%	0.3%	0.1%	
Int'l Charter Airlines	0	0	0.0%	17	26	-34.6%	0.0%	0.1%	
All Cargo Airlines	75	116	-35.3%	975	981	-0.6%	2.8%	3.2%	
<b>Total</b>	<b>2,957</b>	<b>3,612</b>	<b>-18.1%</b>	<b>35,223</b>	<b>31,139</b>	<b>13.1%</b>			
Departure Operations									
Domestic Passenger Airlines	2,877	3,482	-17.4%	34,131	30,094	13.4%	96.9%	96.7%	
Int'l Passenger Airlines	0	0	0.0%	0	0	0.0%	0.0%	0.0%	
Domestic Charter Airlines	0	14	-100.0%	97	43	125.6%	0.3%	0.1%	
Int'l Charter Airlines	0	0	0.0%	20	15	33.3%	0.1%	0.0%	
All Cargo Airlines	75	114	-34.2%	978	979	-0.1%	2.8%	3.1%	
<b>Total</b>	<b>2,952</b>	<b>3,610</b>	<b>-18.2%</b>	<b>35,226</b>	<b>31,131</b>	<b>13.2%</b>			



**LOUIS ARMSTRONG NEW ORLEANS INTERNATIONAL AIRPORT**

**Summary of Enplaned Passengers by Airline**

	Month		%	Year-to-Date		%	Market Share	
	Aug-08	Aug-07	Change	2008	2007	Change	2008	2007
<b>Domestic Scheduled</b>								
AirTran Airways	11,873	11,918	-0.4%	110,403	109,447	0.0%	3.9%	4.4%
American Airlines	34,484	36,759	-6.2%	335,749	377,275	-11.0%	11.8%	15.0%
American Express Carriers	4,377	3,399	28.8%	41,907	17,326	141.9%	1.5%	0.7%
American System Total	38,861	40,158	-3.2%	377,656	394,601	-4.3%	13.3%	15.7%
Continental Airlines	40,402	37,005	9.2%	370,535	359,257	3.1%	13.1%	14.3%
Continental Express Carriers	3,444	2,469	39.5%	27,246	24,418	11.6%	1.0%	1.0%
Continental System Total	43,846	39,474	11.1%	397,781	383,675	3.7%	14.0%	15.3%
Delta Air Lines	32,838	26,185	25.4%	274,693	221,676	23.9%	9.7%	8.8%
Delta Express Carriers	5,874	9,546	-38.5%	62,899	77,666	-19.0%	2.2%	3.1%
Delta System Total	38,712	35,731	8.3%	337,592	299,342	12.8%	11.9%	11.9%
ExpressJet	9,582	10,498	-8.7%	82,784	35,108	136%	2.9%	1.4%
JetBlue	12,653	7,703	64.3%	82,117	61,409	33.7%	2.9%	2.4%
Northwest	13,482	13,460	0.2%	112,405	122,967	-8.6%	4.0%	4.9%
Southwest	93,320	74,732	24.9%	794,631	633,804	25.4%	28.0%	25.2%
United Airlines	16,015	21,326	-24.9%	222,502	191,456	16.2%	7.9%	7.6%
United Express Carriers	8,432	5,979	41.0%	30,472	37,691	-19.2%	1.1%	1.5%
United System Total	24,447	27,305	-10.5%	252,974	229,147	10.4%	8.9%	9.1%
US Airways	20,331	24,969	-18.6%	199,909	203,599	-1.8%	7.1%	8.1%
US Airways Express Carriers	9,931	3,319	199.2%	73,879	35,900	105.8%	2.6%	1.4%
US Airways System Total	30,262	28,288	7.0%	273,788	239,499	14.3%	9.7%	9.5%
<b>Total Domestic Scheduled</b>	<b>317,038</b>	<b>289,267</b>	<b>9.6%</b>	<b>2,822,131</b>	<b>2,508,999</b>	<b>12.5%</b>	<b>99.6%</b>	<b>99.7%</b>
<b>Charter</b>								
Domestic	451	1,294	-65.1%	7,722	3,045	153.6%	0.3%	0.1%
International	51	0	100.0%	3,926	3,283	19.6%	0.1%	0.1%
<b>Total Charter</b>	<b>502</b>	<b>1,294</b>	<b>-61.2%</b>	<b>11,648</b>	<b>6,328</b>	<b>84.1%</b>	<b>0.4%</b>	<b>0.3%</b>
<b>Total Enplaned</b>	<b>317,540</b>	<b>290,561</b>	<b>9.3%</b>	<b>2,833,779</b>	<b>2,515,327</b>	<b>12.7%</b>		

**LOUIS ARMSTRONG NEW ORLEANS INTERNATIONAL AIRPORT**

**Summary of Deplanned Passengers by Airline**

	Month		%	Year-to-Date		%	Market Share	
	Aug-08	Aug-07	Change	2008	2007	Change	2008	2007
<b>Domestic Scheduled</b>								
AirTran Airways	12,526	12,304	1.8%	110,072	107,592	0.0%	3.9%	4.3%
American Airlines	33,614	38,345	-12.3%	337,166	380,422	-11.4%	12.0%	15.2%
American Express Carriers	3,881	3,245	19.6%	38,556	16,799	129.5%	1.4%	0.7%
American System Total	37,495	41,590	-9.8%	375,722	397,221	-5.4%	13.4%	15.8%
Continental Airlines	39,846	38,229	4.2%	362,812	354,785	2.3%	12.9%	14.1%
Continental Express Carriers	3,432	2,558	34.2%	26,542	23,415	13.4%	0.9%	0.9%
Continental System Total	43,278	40,787	6.1%	389,354	378,200	2.9%	13.9%	15.1%
Delta Air Lines	31,893	28,136	13.4%	270,556	224,513	20.5%	9.6%	8.9%
Delta Express Carriers	5,471	9,328	-41.3%	64,658	74,659	-13.4%	2.3%	3.0%
Delta System Total	37,364	37,464	-0.3%	335,214	299,172	12.0%	11.9%	11.9%
ExpressJet	9,351	10,420	-10.3%	81,462	35,383	130%	2.9%	1.4%
JetBlue	12,807	7,935	61.4%	82,847	60,241	37.5%	3.0%	2.4%
Northwest	12,062	13,448	-10.3%	111,031	124,083	-10.5%	4.0%	4.9%
Southwest	88,577	75,552	17.2%	785,778	631,851	24.4%	28.0%	25.2%
United Airlines	16,394	21,871	-25.0%	220,465	191,380	15.2%	7.9%	7.6%
United Express Carriers	8,417	6,345	32.7%	31,908	38,738	-17.6%	1.1%	1.5%
United System Total	24,811	28,216	-12.1%	252,373	230,118	9.7%	9.0%	9.2%
US Airways	20,581	25,290	-18.6%	198,634	200,902	-1.1%	7.1%	8.0%
US Airways Express Carriers	9,126	3,771	142.0%	72,991	39,398	85.3%	2.6%	1.6%
US Airways System Total	29,707	29,061	2.2%	271,625	240,300	13.0%	9.7%	9.6%
<b>Total Domestic Scheduled</b>	<b>307,978</b>	<b>296,777</b>	<b>3.8%</b>	<b>2,795,478</b>	<b>2,504,161</b>	<b>11.6%</b>	<b>99.6%</b>	<b>99.8%</b>
<b>Charter</b>								
Domestic	277	957	-71.1%	5,887	2,253	161.3%	0.2%	0.1%
International	420	149	181.9%	4,662	3,932	18.6%	0.2%	0.2%
<b>Total Charter</b>	<b>697</b>	<b>1,106</b>	<b>-37.0%</b>	<b>10,549</b>	<b>6,185</b>	<b>70.6%</b>	<b>0.4%</b>	<b>0.2%</b>
<b>Total Deplanned</b>	<b>308,675</b>	<b>297,883</b>	<b>3.6%</b>	<b>2,806,027</b>	<b>2,510,346</b>	<b>11.8%</b>		

**LOUIS ARMSTRONG NEW ORLEANS INTERNATIONAL AIRPORT**

**Summary of Freight and Mail Activity (Enplaned & Deplaned Combined)**

	Month		%	Year-to-Date		%	Market Share	
	Aug-08	Aug-07	Change	2008	2007	Change	2008	2007
<b>Domestic Freight &amp; Mail</b>								
AirTran Airways	0	115,411	-100.0%	0	406,233	-100.0%	0.0%	0.6%
American Airlines	9,107	9,330	-2.4%	42,058	71,524	-41.2%	0.1%	0.1%
Continental Airlines	392,887	517,161	-24.0%	3,317,324	3,984,022	-16.7%	5.2%	6.3%
Delta Air Lines	164,856	256,698	-35.8%	1,495,824	1,531,922	-2.4%	2.3%	2.4%
Delta Express Carriers	865	3,865	-77.6%	21,056	34,918	-39.7%	0.0%	0.1%
Northwest	13,938	9,177	51.9%	108,439	66,911	62.1%	0.2%	0.1%
Southwest Airlines	599,139	683,671	-12.4%	4,715,852	5,733,912	-17.8%	7.4%	9.0%
United Airlines	15,244	31,102	-51.0%	259,806	238,411	9.0%	0.4%	0.4%
US Airways	24,634	39,014	-36.9%	115,288	315,394	-63.4%	0.2%	0.5%
US Airways Express Carriers	2,333	15	15453.3%	14,512	2,310	528.2%	0.0%	0.0%
ABX Air Inc.	0	1,110,089	-100.0%	6,655,249	5,521,665	20.5%	10.4%	8.7%
DHL	1,039,529	1,360,695	-23.6%	8,847,328	9,450,348	-6.4%	13.9%	14.9%
Federal Express	3,411,883	3,229,407	5.7%	24,584,045	21,745,256	13.1%	38.5%	34.3%
UPS	1,575,659	1,963,691	-19.8%	13,490,493	14,082,219	-4.2%	21.1%	22.2%
<b>Total Domestic</b>	<b>7,250,074</b>	<b>9,329,326</b>	<b>-22.3%</b>	<b>63,667,274</b>	<b>63,185,045</b>	<b>0.8%</b>	<b>99.7%</b>	<b>99.7%</b>
<b>International Freight &amp; Mail</b>								
Delta Air Lines	19,033	30,840	-38.3%	183,135	214,256	-14.5%	0.3%	0.3%
<b>Total International</b>	<b>19,033</b>	<b>30,840</b>	<b>-38.3%</b>	<b>183,135</b>	<b>214,256</b>	<b>-14.5%</b>	<b>0.3%</b>	<b>0.3%</b>
<b>Total Freight and Mail</b>	<b>7,269,107</b>	<b>9,360,166</b>	<b>-22.3%</b>	<b>63,850,409</b>	<b>63,399,301</b>	<b>0.7%</b>		
Total in Metric Tonnes	3,296.54	4,244.84		28,956.16	28,751.58			

**Summary of Air Freight and Mail (lbs.)**

Domestic Enplaned	2,913,641	4,039,967	-27.9%	26,660,769	26,944,922	-1.1%	41.8%	42.5%
Domestic Deplaned	4,336,433	5,289,359	-18.0%	37,006,505	36,240,123	2.1%	58.0%	57.2%
International Enplaned	3,847	2,892	33.0%	39,465	62,045	-36.4%	0.1%	0.1%
International Deplaned	15,186	27,948	-45.7%	143,670	152,211	-5.6%	0.2%	0.2%
<b>Total</b>	<b>7,269,107</b>	<b>9,360,166</b>	<b>-22.3%</b>	<b>63,850,409</b>	<b>63,399,301</b>	<b>0.7%</b>		

Note: All freight and express on international waybills is reported as International even if on domestic flights.

LOUIS ARMSTRONG NEW ORLEANS INTERNATIONAL AIRPORT

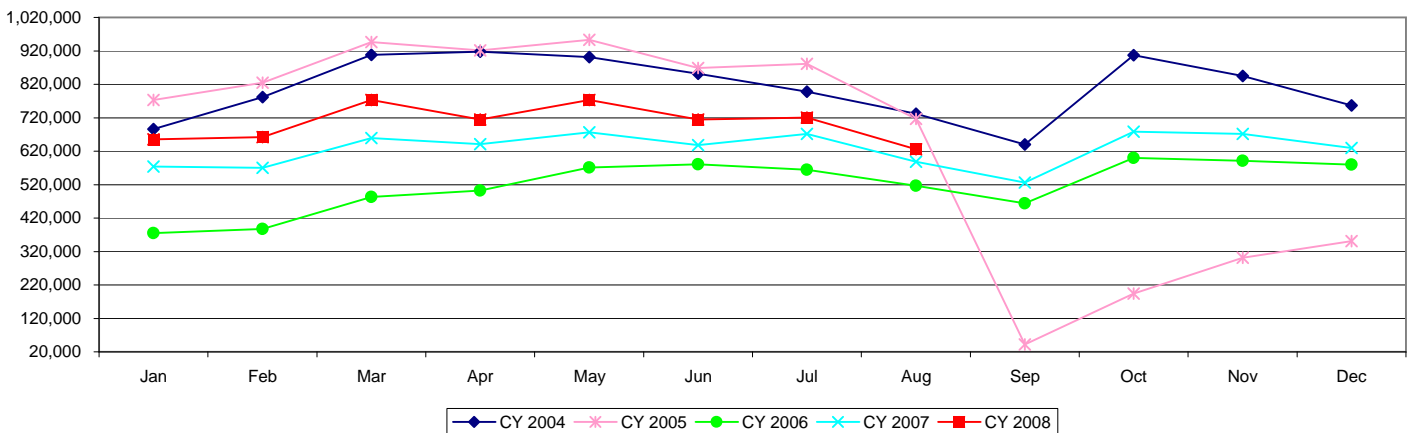
Summary of Passenger Statistics

	Month			Year-to-Date			Market Share	
	Aug-08	Aug-07	% Change	2008	2007	% Change	2008	2007
<b>Enplaned Passengers</b>								
Domestic Scheduled	317,038	289,267	9.6%	2,822,131	2,508,999	12.5%	50.0%	49.9%
Domestic Charter	451	1,294	-65.1%	7,722	3,045	153.6%	0.1%	0.1%
International Charter	51	0	100.0%	3,926	3,283	19.6%	0.1%	0.1%
<b>Deplaned Passengers</b>								
Domestic Scheduled	307,978	296,777	3.8%	2,795,478	2,504,161	11.6%	49.6%	49.8%
Domestic Charter	277	957	-71.1%	5,887	2,253	161.3%	0.1%	0.0%
International Charter	420	149	181.9%	4,662	3,932	18.6%	0.1%	0.1%
<b>Total Passengers</b>								
Domestic Scheduled	625,016	586,044	6.7%	5,617,609	5,013,160	12.1%	99.6%	99.8%
Domestic Charter	728	2,251	-67.7%	13,609	5,298	156.9%	0.2%	0.1%
International Charter	471	149	216.1%	8,588	7,215	19.0%	0.2%	0.1%
<b>Total</b>	<b>626,215</b>	<b>588,444</b>	<b>6.4%</b>	<b>5,639,806</b>	<b>5,025,673</b>	<b>12.2%</b>		

Summary of Aircraft Operations

Arrival Operations									
Domestic Passenger Airlines	3,896	3,678	5.9%	31,253	26,613	17.4%	96.9%	96.7%	
Int'l Passenger Airlines	0	0	0.0%	0	0	0.0%	0.0%	0.0%	
Domestic Charter Airlines	1	10	-90.0%	96	23	317.4%	0.3%	0.1%	
Int'l Charter Airlines	3	1	200.0%	17	26	-34.6%	0.1%	0.1%	
All Cargo Airlines	109	128	-14.8%	900	865	4.0%	2.8%	3.1%	
<b>Total</b>	<b>4,009</b>	<b>3,817</b>	<b>5.0%</b>	<b>32,266</b>	<b>27,527</b>	<b>17.2%</b>			
Departure Operations									
Domestic Passenger Airlines	3,902	3,680	6.0%	31,254	26,612	17.4%	96.8%	96.7%	
Int'l Passenger Airlines	0	0	0.0%	0	0	0.0%	0.0%	0.0%	
Domestic Charter Airlines	2	13	-84.6%	97	29	234.5%	0.3%	0.1%	
Int'l Charter Airlines	1	0	100.0%	20	15	33.3%	0.1%	0.1%	
All Cargo Airlines	109	128	-14.8%	903	865	4.4%	2.8%	3.1%	
<b>Total</b>	<b>4,014</b>	<b>3,821</b>	<b>5.1%</b>	<b>32,274</b>	<b>27,521</b>	<b>17.3%</b>			

Total Passengers by Month





**LOUIS ARMSTRONG NEW ORLEANS INTERNATIONAL AIRPORT**

**Summary of Enplaned Passengers by Airline**

	Month		%	Year-to-Date		%	Market Share	
	Jul-08	Jul-07	Change	2008	2007	Change	2008	2007
<b>Domestic Scheduled</b>								
AirTran Airways	13,472	15,506	-13.1%	98,530	97,529	0.0%	3.9%	4.4%
American Airlines	42,043	45,476	-7.5%	301,265	340,516	-11.5%	12.0%	15.3%
American Express Carriers	5,093	3,723	36.8%	37,530	13,927	169.5%	1.5%	0.6%
American System Total	47,136	49,199	-4.2%	338,795	354,443	-4.4%	13.5%	15.9%
Continental Airlines	45,543	42,209	7.9%	330,133	322,252	2.4%	13.1%	14.5%
Continental Express Carriers	3,825	2,594	47.5%	23,802	21,949	8.4%	0.9%	1.0%
Continental System Total	49,368	44,803	10.2%	353,935	344,201	2.8%	14.1%	15.5%
Delta Air Lines	35,729	29,947	19.3%	241,855	195,491	23.7%	9.6%	8.8%
Delta Express Carriers	6,551	10,584	-38.1%	57,025	68,120	-16.3%	2.3%	3.1%
Delta System Total	42,280	40,531	4.3%	298,880	263,611	13.4%	11.9%	11.8%
ExpressJet	10,573	11,052	-4.3%	73,202	24,610	197%	2.9%	1.1%
JetBlue	14,047	7,971	76.2%	69,464	53,706	29.3%	2.8%	2.4%
Northwest	12,654	14,109	-10.3%	98,923	109,507	-9.7%	3.9%	4.9%
Southwest	106,606	84,505	26.2%	701,311	559,072	25.4%	27.9%	25.1%
United Airlines	20,959	27,142	-22.8%	206,487	170,130	21.4%	8.2%	7.6%
United Express Carriers	9,421	6,799	38.6%	22,040	31,712	-30.5%	0.9%	1.4%
United System Total	30,380	33,941	-10.5%	228,527	201,842	13.2%	9.1%	9.1%
US Airways	24,965	29,079	-14.1%	179,578	178,630	0.5%	7.1%	8.0%
US Airways Express Carriers	10,881	3,768	188.8%	63,948	32,581	96.3%	2.5%	1.5%
US Airways System Total	35,846	32,847	9.1%	243,526	211,211	15.3%	9.7%	9.5%
<b>Total Domestic Scheduled</b>	<b>362,362</b>	<b>334,464</b>	<b>8.3%</b>	<b>2,505,093</b>	<b>2,219,732</b>	<b>12.9%</b>	<b>99.6%</b>	<b>99.8%</b>
<b>Charter</b>								
Domestic	458	420	9.0%	7,271	1,751	315.2%	0.3%	0.1%
International	319	281	13.5%	3,875	3,283	18.0%	0.2%	0.1%
<b>Total Charter</b>	<b>777</b>	<b>701</b>	<b>10.8%</b>	<b>11,146</b>	<b>5,034</b>	<b>121.4%</b>	<b>0.4%</b>	<b>0.2%</b>
<b>Total Enplaned</b>	<b>363,139</b>	<b>335,165</b>	<b>8.3%</b>	<b>2,516,239</b>	<b>2,224,766</b>	<b>13.1%</b>		

LOUIS ARMSTRONG NEW ORLEANS INTERNATIONAL AIRPORT

Summary of Deplanned Passengers by Airline

	Month		%	Year-to-Date		%	Market Share	
	Jul-08	Jul-07	Change	2008	2007	Change	2008	2007
<b>Domestic Scheduled</b>								
AirTran Airways	13,948	15,262	-8.6%	97,546	95,288	0.0%	3.9%	4.3%
American Airlines	41,740	46,223	-9.7%	303,552	342,077	-11.3%	12.2%	15.5%
American Express Carriers	4,478	3,650	22.7%	34,675	13,554	155.8%	1.4%	0.6%
American System Total	46,218	49,873	-7.3%	338,227	355,631	-4.9%	13.5%	16.1%
Continental Airlines	44,415	42,704	4.0%	322,966	316,556	2.0%	12.9%	14.3%
Continental Express Carriers	3,650	2,494	46.4%	23,110	20,857	10.8%	0.9%	0.9%
Continental System Total	48,065	45,198	6.3%	346,076	337,413	2.6%	13.9%	15.3%
Delta Air Lines	34,203	30,551	12.0%	238,663	196,377	21.5%	9.6%	8.9%
Delta Express Carriers	6,463	9,425	-31.4%	59,187	65,331	-9.4%	2.4%	3.0%
Delta System Total	40,666	39,976	1.7%	297,850	261,708	13.8%	11.9%	11.8%
ExpressJet	10,340	11,125	-7.1%	72,111	24,963	189%	2.9%	1.1%
JetBlue	14,065	8,038	75.0%	70,040	52,306	33.9%	2.8%	2.4%
Northwest	12,870	14,782	-12.9%	98,969	110,635	-10.5%	4.0%	5.0%
Southwest	104,774	83,744	25.1%	697,201	556,299	25.3%	27.9%	25.1%
United Airlines	20,621	26,898	-23.3%	204,071	169,509	20.4%	8.2%	7.7%
United Express Carriers	9,596	7,084	35.5%	23,491	32,393	-27.5%	0.9%	1.5%
United System Total	30,217	33,982	-11.1%	227,562	201,902	12.7%	9.1%	9.1%
US Airways	25,182	29,324	-14.1%	178,053	175,612	1.4%	7.1%	7.9%
US Airways Express Carriers	10,175	4,110	147.6%	63,865	35,627	79.3%	2.6%	1.6%
US Airways System Total	35,357	33,434	5.8%	241,918	211,239	14.5%	9.7%	9.5%
<b>Total Domestic Scheduled</b>	<b>356,520</b>	<b>335,414</b>	<b>6.3%</b>	<b>2,487,500</b>	<b>2,207,384</b>	<b>12.7%</b>	<b>99.6%</b>	<b>99.8%</b>
<b>Charter</b>								
Domestic	351	654	-46.3%	5,610	1,296	332.9%	0.2%	0.1%
International	276	210	31.4%	4,242	3,783	12.1%	0.2%	0.2%
<b>Total Charter</b>	<b>627</b>	<b>864</b>	<b>-27.4%</b>	<b>9,852</b>	<b>5,079</b>	<b>94.0%</b>	<b>0.4%</b>	<b>0.2%</b>
<b>Total Deplanned</b>	<b>357,147</b>	<b>336,278</b>	<b>6.2%</b>	<b>2,497,352</b>	<b>2,212,463</b>	<b>12.9%</b>		

**LOUIS ARMSTRONG NEW ORLEANS INTERNATIONAL AIRPORT**

**Summary of Freight and Mail Activity (Enplaned & Deplaned Combined)**

	Month		%	Year-to-Date		%	Market Share	
	Jul-08	Jul-07	Change	2008	2007	Change	2008	2007
<b>Domestic Freight &amp; Mail</b>								
AirTran Airways	0	99,400	-100.0%	0	290,822	-100.0%	0.0%	0.5%
American Airlines	515	12,603	-95.9%	32,951	62,194	-47.0%	0.1%	0.1%
Continental Airlines	427,110	476,372	-10.3%	2,924,437	3,466,861	-15.6%	5.2%	6.4%
Delta Air Lines	106,003	250,265	-57.6%	1,330,968	1,275,224	4.4%	2.4%	2.4%
Delta Express Carriers	961	4,740	-79.7%	20,191	31,053	-35.0%	0.0%	0.1%
Northwest	16,095	11,840	35.9%	94,501	57,734	63.7%	0.2%	0.1%
Southwest Airlines	768,766	762,246	0.9%	4,116,713	5,050,241	-18.5%	7.3%	9.3%
United Airlines	31,191	29,701	5.0%	244,562	207,309	18.0%	0.4%	0.4%
US Airways	12,301	27,753	-55.7%	90,654	276,380	-67.2%	0.2%	0.5%
US Airways Express Carriers	3,594	201	1688.1%	12,179	2,295	430.7%	0.0%	0.0%
ABX Air Inc.	993,555	1,005,853	-1.2%	6,655,249	4,411,576	50.9%	11.8%	8.2%
DHL	1,049,844	906,816	15.8%	7,807,799	8,089,653	-3.5%	13.8%	15.0%
Federal Express	2,931,256	2,844,639	3.0%	21,172,162	18,515,849	14.3%	37.4%	34.3%
UPS	1,625,869	1,770,500	-8.2%	11,914,834	12,118,528	-1.7%	21.1%	22.4%
<b>Total Domestic</b>	<b>7,967,060</b>	<b>8,202,929</b>	<b>-2.9%</b>	<b>56,417,200</b>	<b>53,855,719</b>	<b>4.8%</b>	<b>99.7%</b>	<b>99.7%</b>
<b>International Freight &amp; Mail</b>								
Delta Air Lines	11,361	34,593	-67.2%	164,102	183,416	-10.5%	0.3%	0.3%
<b>Total International</b>	<b>11,361</b>	<b>34,593</b>	<b>-67.2%</b>	<b>164,102</b>	<b>183,416</b>	<b>-10.5%</b>	<b>0.3%</b>	<b>0.3%</b>
<b>Total Freight and Mail</b>	<b>7,978,421</b>	<b>8,237,522</b>	<b>-3.1%</b>	<b>56,581,302</b>	<b>54,039,135</b>	<b>4.7%</b>		
Total in Metric Tonnes	3,618.21	3,735.72		25,659.62	24,506.75			

**Summary of Air Freight and Mail (lbs.)**

Domestic Enplaned	3,433,710	3,696,920	-7.1%	23,747,128	22,904,955	3.7%	42.0%	42.4%
Domestic Deplaned	4,533,350	4,506,009	0.6%	32,670,072	30,950,764	5.6%	57.7%	57.3%
International Enplaned	2,499	21,437	-88.3%	35,618	59,153	-39.8%	0.1%	0.1%
International Deplaned	8,862	13,156	-32.6%	128,484	124,263	3.4%	0.2%	0.2%
<b>Total</b>	<b>7,978,421</b>	<b>8,237,522</b>	<b>-3.1%</b>	<b>56,581,302</b>	<b>54,039,135</b>	<b>4.7%</b>		

Note: All freight and express on international waybills is reported as International even if on domestic flights.

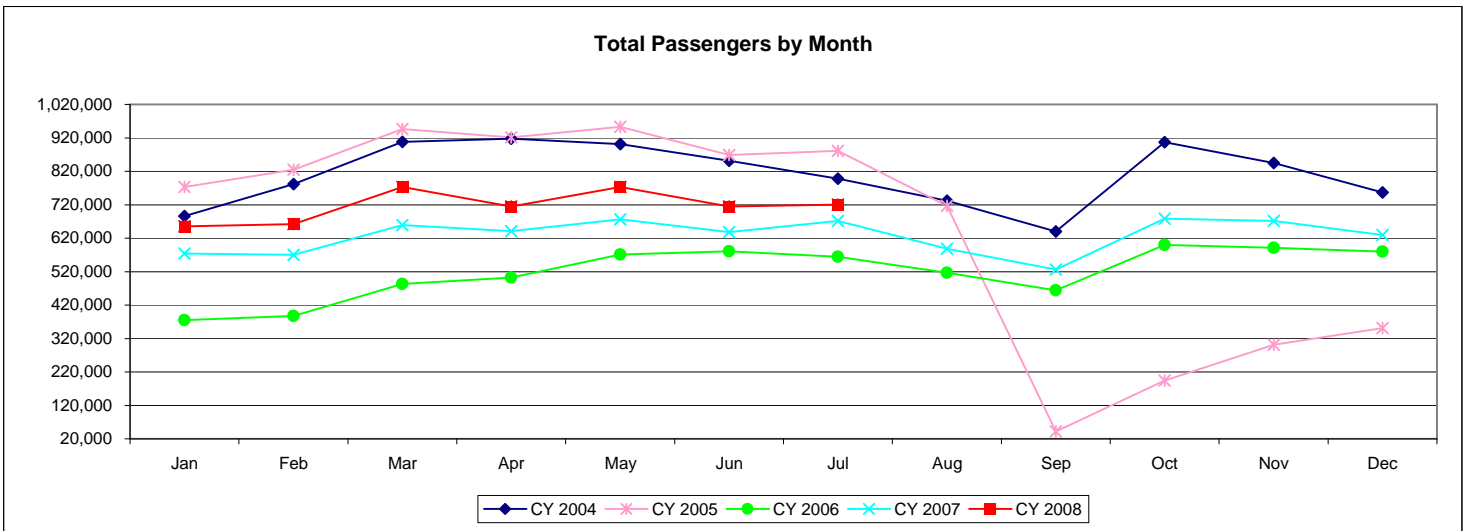
LOUIS ARMSTRONG NEW ORLEANS INTERNATIONAL AIRPORT

Summary of Passenger Statistics

	Month			Year-to-Date			Market Share	
	Jul-08	Jul-07	% Change	2008	2007	% Change	2008	2007
<b>Enplaned Passengers</b>								
Domestic Scheduled	362,362	334,464	8.3%	2,505,093	2,219,732	12.9%	50.0%	50.0%
Domestic Charter	458	420	9.0%	7,271	1,751	315.2%	0.1%	0.0%
International Charter	319	281	13.5%	3,875	3,283	18.0%	0.1%	0.1%
<b>Deplaned Passengers</b>								
Domestic Scheduled	356,520	335,414	6.3%	2,487,500	2,207,384	12.7%	49.6%	49.7%
Domestic Charter	351	654	-46.3%	5,610	1,296	332.9%	0.1%	0.0%
International Charter	276	210	31.4%	4,242	3,783	12.1%	0.1%	0.1%
<b>Total Passengers</b>								
Domestic Scheduled	718,882	669,878	7.3%	4,992,593	4,427,116	12.8%	99.6%	99.8%
Domestic Charter	809	1,074	-24.7%	12,881	3,047	322.7%	0.3%	0.1%
International Charter	595	491	21.2%	8,117	7,066	14.9%	0.2%	0.2%
<b>Total</b>	<b>720,286</b>	<b>671,443</b>	<b>7.3%</b>	<b>5,013,591</b>	<b>4,437,229</b>	<b>13.0%</b>		

Summary of Aircraft Operations

Arrival Operations								
Domestic Passenger Airlines	3,939	3,681	7.0%	27,357	22,935	19.3%	96.8%	96.7%
Int'l Passenger Airlines	0	0	0.0%	0	0	0.0%	0.0%	0.0%
Domestic Charter Airlines	7	6	16.7%	95	13	630.8%	0.3%	0.1%
Int'l Charter Airlines	3	3	0.0%	14	25	-44.0%	0.0%	0.1%
All Cargo Airlines	104	101	3.0%	791	737	7.3%	2.8%	3.1%
<b>Total</b>	<b>4,053</b>	<b>3,791</b>	<b>6.9%</b>	<b>28,257</b>	<b>23,710</b>	<b>19.2%</b>		
Departure Operations								
Domestic Passenger Airlines	3,940	3,673	7.3%	27,352	22,932	19.3%	96.8%	96.8%
Int'l Passenger Airlines	0	0	0.0%	0	0	0.0%	0.0%	0.0%
Domestic Charter Airlines	8	4	100.0%	95	16	493.8%	0.3%	0.1%
Int'l Charter Airlines	3	4	-25.0%	19	15	26.7%	0.1%	0.1%
All Cargo Airlines	105	101	4.0%	794	737	7.7%	2.8%	3.1%
<b>Total</b>	<b>4,056</b>	<b>3,782</b>	<b>7.2%</b>	<b>28,260</b>	<b>23,700</b>	<b>19.2%</b>		



**LOUIS ARMSTRONG NEW ORLEANS INTERNATIONAL AIRPORT**

**Summary of Enplaned Passengers by Airline**

	Month		%	Year-to-Date		%	Market Share	
	Jun-08	Jun-07	Change	2008	2007	Change	2008	2007
<b>Domestic Scheduled</b>								
AirTran Airways	14,482	14,384	0.7%	85,058	82,023	0.0%	4.0%	4.3%
American Airlines	41,230	44,927	-8.2%	259,222	295,040	-12.1%	12.0%	15.6%
American Express Carriers	5,029	3,655	37.6%	32,437	10,204	217.9%	1.5%	0.5%
American System Total	46,259	48,582	-4.8%	291,659	305,244	-4.5%	13.5%	16.2%
Continental Airlines	45,878	42,795	7.2%	284,590	280,043	1.6%	13.2%	14.8%
Continental Express Carriers	3,146	2,589	21.5%	19,977	19,355	3.2%	0.9%	1.0%
Continental System Total	49,024	45,384	8.0%	304,567	299,398	1.7%	14.1%	15.8%
Delta Air Lines	34,641	29,050	19.2%	206,126	165,544	24.5%	9.6%	8.8%
Delta Express Carriers	5,949	9,975	-40.4%	50,474	57,536	-12.3%	2.3%	3.0%
Delta System Total	40,590	39,025	4.0%	256,600	223,080	15.0%	11.9%	11.8%
ExpressJet	10,268	8,211	25.1%	62,629	13,558	362%	2.9%	0.7%
JetBlue	12,846	7,663	67.6%	55,417	45,735	21.2%	2.6%	2.4%
Northwest	13,156	14,726	-10.7%	86,269	95,398	-9.6%	4.0%	5.0%
Southwest	102,277	78,865	29.7%	594,705	474,567	25.3%	27.6%	25.1%
United Airlines	22,376	25,413	-12.0%	185,528	142,988	29.8%	8.6%	7.6%
United Express Carriers	8,004	5,615	42.5%	12,619	24,913	-49.3%	0.6%	1.3%
United System Total	30,380	31,028	-2.1%	198,147	167,901	18.0%	9.2%	8.9%
US Airways	25,518	25,375	0.6%	154,613	149,551	3.4%	7.2%	7.9%
US Airways Express Carriers	8,825	4,451	98.3%	53,067	28,813	84.2%	2.5%	1.5%
US Airways System Total	34,343	29,826	15.1%	207,680	178,364	16.4%	9.6%	9.4%
<b>Total Domestic Scheduled</b>	<b>353,625</b>	<b>317,694</b>	<b>11.3%</b>	<b>2,142,731</b>	<b>1,885,268</b>	<b>13.7%</b>	<b>99.5%</b>	<b>99.8%</b>
<b>Charter</b>								
Domestic	732	1,024	-28.5%	6,813	1,331	411.9%	0.3%	0.1%
International	1,011	242	317.8%	3,556	3,002	18.5%	0.2%	0.2%
<b>Total Charter</b>	<b>1,743</b>	<b>1,266</b>	<b>37.7%</b>	<b>10,369</b>	<b>4,333</b>	<b>139.3%</b>	<b>0.5%</b>	<b>0.2%</b>
<b>Total Enplaned</b>	<b>355,368</b>	<b>318,960</b>	<b>11.4%</b>	<b>2,153,100</b>	<b>1,889,601</b>	<b>13.9%</b>		

LOUIS ARMSTRONG NEW ORLEANS INTERNATIONAL AIRPORT

Summary of Deplanned Passengers by Airline

	Month		%	Year-to-Date		%	Market Share	
	Jun-08	Jun-07	Change	2008	2007	Change	2008	2007
<b>Domestic Scheduled</b>								
AirTran Airways	13,920	14,225	-2.1%	83,598	80,026	0.0%	3.9%	4.3%
American Airlines	42,060	45,316	-7.2%	261,812	295,854	-11.5%	12.2%	15.8%
American Express Carriers	4,622	3,542	30.5%	30,197	9,904	204.9%	1.4%	0.5%
American System Total	46,682	48,858	-4.5%	292,009	305,758	-4.5%	13.6%	16.3%
Continental Airlines	47,319	40,894	15.7%	278,551	273,852	1.7%	13.0%	14.6%
Continental Express Carriers	3,044	2,524	20.6%	19,460	18,363	6.0%	0.9%	1.0%
Continental System Total	50,363	43,418	16.0%	298,011	292,215	2.0%	13.9%	15.6%
Delta Air Lines	33,646	30,159	11.6%	204,460	165,826	23.3%	9.6%	8.8%
Delta Express Carriers	5,785	9,637	-40.0%	52,724	55,906	-5.7%	2.5%	3.0%
Delta System Total	39,431	39,796	-0.9%	257,184	221,732	16.0%	12.0%	11.8%
ExpressJet	10,549	8,518	23.8%	61,771	13,838	346%	2.9%	0.7%
JetBlue	13,145	7,437	76.8%	55,975	44,268	26.4%	2.6%	2.4%
Northwest	13,310	14,380	-7.4%	86,099	95,853	-10.2%	4.0%	5.1%
Southwest	105,961	79,856	32.7%	592,427	472,555	25.4%	27.7%	25.2%
United Airlines	21,679	25,651	-15.5%	183,450	142,611	28.6%	8.6%	7.6%
United Express Carriers	8,937	5,836	53.1%	13,895	25,309	-45.1%	0.6%	1.3%
United System Total	30,616	31,487	-2.8%	197,345	167,920	17.5%	9.2%	9.0%
US Airways	25,474	25,009	1.9%	152,871	146,288	4.5%	7.1%	7.8%
US Airways Express Carriers	8,657	4,747	82.4%	53,690	31,517	70.4%	2.5%	1.7%
US Airways System Total	34,131	29,756	14.7%	206,561	177,805	16.2%	9.7%	9.5%
<b>Total Domestic Scheduled</b>	<b>358,108</b>	<b>317,731</b>	<b>12.7%</b>	<b>2,130,980</b>	<b>1,871,970</b>	<b>13.8%</b>	<b>99.6%</b>	<b>99.8%</b>
<b>Charter</b>								
Domestic	477	428	11.4%	5,259	642	719.2%	0.2%	0.0%
International	1,202	1,142	5.3%	3,966	3,573	11.0%	0.2%	0.2%
<b>Total Charter</b>	<b>1,679</b>	<b>1,570</b>	<b>6.9%</b>	<b>9,225</b>	<b>4,215</b>	<b>118.9%</b>	<b>0.4%</b>	<b>0.2%</b>
<b>Total Deplanned</b>	<b>359,787</b>	<b>319,301</b>	<b>12.7%</b>	<b>2,140,205</b>	<b>1,876,185</b>	<b>14.1%</b>		

**LOUIS ARMSTRONG NEW ORLEANS INTERNATIONAL AIRPORT**

**Summary of Freight and Mail Activity (Enplaned & Deplaned Combined)**

	Month		%	Year-to-Date		%	Market Share	
	Jun-08	Jun-07	Change	2008	2007	Change	2008	2007
<b>Domestic Freight &amp; Mail</b>								
AirTran Airways	0	53,960	-100.0%	0	191,422	-100.0%	0.0%	0.4%
American Airlines	359	6,790	-94.7%	32,436	49,591	-34.6%	0.1%	0.1%
Continental Airlines	288,904	574,084	-49.7%	2,497,327	2,990,489	-16.5%	5.1%	6.5%
Delta Air Lines	188,010	165,049	13.9%	1,224,965	1,024,959	19.5%	2.5%	2.2%
Delta Express Carriers	476	9,626	-95.1%	19,230	26,313	-26.9%	0.0%	0.1%
Northwest	12,120	10,325	17.4%	78,406	45,894	70.8%	0.2%	0.1%
Southwest Airlines	748,835	797,245	-6.1%	3,347,947	4,287,995	-21.9%	6.9%	9.4%
United Airlines	39,237	27,080	44.9%	213,371	177,608	20.1%	0.4%	0.4%
US Airways	29,232	39,956	-26.8%	78,353	248,627	-68.5%	0.2%	0.5%
US Airways Express Carriers	1,852	612	202.6%	8,585	2,094	310.0%	0.0%	0.0%
ABX Air Inc.	1,094,824	990,418	10.5%	5,661,694	3,405,723	66.2%	11.6%	7.4%
DHL	961,387	849,116	13.2%	6,757,955	7,182,837	-5.9%	13.9%	15.7%
Federal Express	2,567,499	2,981,486	-13.9%	18,240,906	15,671,210	16.4%	37.5%	34.2%
UPS	1,581,324	1,817,287	-13.0%	10,288,965	10,348,028	-0.6%	21.2%	22.6%
<b>Total Domestic</b>	<b>7,514,059</b>	<b>8,323,034</b>	<b>-9.7%</b>	<b>48,450,140</b>	<b>45,652,790</b>	<b>6.1%</b>	<b>99.7%</b>	<b>99.7%</b>
<b>International Freight &amp; Mail</b>								
Delta Air Lines	24,769	44,181	-43.9%	152,741	148,823	2.6%	0.3%	0.3%
<b>Total International</b>	<b>24,769</b>	<b>44,181</b>	<b>-43.9%</b>	<b>152,741</b>	<b>148,823</b>	<b>2.6%</b>	<b>0.3%</b>	<b>0.3%</b>
<b>Total Freight and Mail</b>	<b>7,538,828</b>	<b>8,367,215</b>	<b>-9.9%</b>	<b>48,602,881</b>	<b>45,801,613</b>	<b>6.1%</b>		
Total in Metric Tonnes	3,418.86	3,794.53		22,041.41	20,771.03			

**Summary of Air Freight and Mail (lbs.)**

Domestic Enplaned	3,215,851	3,726,441	-13.7%	20,313,418	19,208,035	5.8%	41.8%	41.9%
Domestic Deplaned	4,298,208	4,596,593	-6.5%	28,136,722	26,444,755	6.4%	57.9%	57.7%
International Enplaned	5,452	3,381	61.3%	33,119	37,716	-12.2%	0.1%	0.1%
International Deplaned	19,317	40,800	-52.7%	119,622	111,107	7.7%	0.2%	0.2%
<b>Total</b>	<b>7,538,828</b>	<b>8,367,215</b>	<b>-9.9%</b>	<b>48,602,881</b>	<b>45,801,613</b>	<b>6.1%</b>		

Note: All freight and express on international waybills is reported as International even if on domestic flights.





## LOUIS ARMSTRONG NEW ORLEANS INTERNATIONAL AIRPORT

## Summary of Enplaned Passengers by Airline

	Month		%	Year-to-Date		%	Market Share	
	May-08	May-07	Change	2008	2007	Change	2008	2007
<b>Domestic Scheduled</b>								
AirTran Airways	14,923	16,542	-9.8%	70,576	67,639	0.0%	3.9%	4.3%
American Airlines	45,011	49,372	-8.8%	217,992	250,113	-12.8%	12.1%	15.9%
American Express Carriers	5,788	3,987	45.2%	27,408	6,549	318.5%	1.5%	0.4%
American System Total	50,799	53,359	-4.8%	245,400	256,662	-4.4%	13.7%	16.3%
Continental Airlines	56,353	53,893	4.6%	238,712	237,248	0.6%	13.3%	15.1%
Continental Express Carriers	2,368	2,534	-6.6%	16,831	16,766	0.4%	0.9%	1.1%
Continental System Total	58,721	56,427	4.1%	255,543	254,014	0.6%	14.2%	16.2%
Delta Air Lines	37,059	29,416	26.0%	171,485	136,494	25.6%	9.5%	8.7%
Delta Express Carriers	9,621	11,391	-15.5%	44,525	47,561	-6.4%	2.5%	3.0%
Delta System Total	46,680	40,807	14.4%	216,010	184,055	17.4%	12.0%	11.7%
ExpressJet	11,020	5,309	107.6%	52,361	5,347	879%	2.9%	0.3%
JetBlue	12,947	8,365	54.8%	42,571	38,072	11.8%	2.4%	2.4%
Northwest	17,015	18,141	-6.2%	73,113	80,672	-9.4%	4.1%	5.1%
Southwest	112,382	87,409	28.6%	492,428	395,702	24.4%	27.4%	25.2%
United Airlines	36,210	28,045	29.1%	163,152	117,575	38.8%	9.1%	7.5%
United Express Carriers	0	3,628	-100.0%	4,615	19,298	-76.1%	0.3%	1.2%
United System Total	36,210	31,673	14.3%	167,767	136,873	22.6%	9.3%	8.7%
US Airways	29,203	27,658	5.6%	129,095	124,176	4.0%	7.2%	7.9%
US Airways Express Carriers	9,142	5,680	61.0%	44,242	24,362	81.6%	2.5%	1.6%
US Airways System Total	38,345	33,338	15.0%	173,337	148,538	16.7%	9.6%	9.5%
<b>Total Domestic Scheduled</b>	<b>399,042</b>	<b>351,370</b>	<b>13.6%</b>	<b>1,789,106</b>	<b>1,567,574</b>	<b>14.1%</b>	<b>99.5%</b>	<b>99.8%</b>
<b>Charter</b>								
> Domestic	952	201	373.6%	6,081	307	1880.8%	0.3%	0.0%
International	632	900	-29.8%	2,545	2,760	-7.8%	0.1%	0.2%
> <b>Total Charter</b>	<b>1,584</b>	<b>1,101</b>	<b>43.9%</b>	<b>8,626</b>	<b>3,067</b>	<b>181.3%</b>	<b>0.5%</b>	<b>0.2%</b>
> <b>Total Enplaned</b>	<b>400,626</b>	<b>352,471</b>	<b>13.7%</b>	<b>1,797,732</b>	<b>1,570,641</b>	<b>14.5%</b>		

## LOUIS ARMSTRONG NEW ORLEANS INTERNATIONAL AIRPORT

## Summary of Deplanned Passengers by Airline

	Month		%	Year-to-Date		%	Market Share	
	May-08	May-07	Change	2008	2007	Change	2008	2007
<b>Domestic Scheduled</b>								
AirTran Airways	14,915	15,245	-2.2%	69,678	65,801	10.0%	3.9%	4.2%
American Airlines	41,652	44,446	-6.3%	219,752	250,538	-12.3%	12.3%	16.1%
American Express Carriers	4,871	3,639	33.9%	25,575	6,362	302.0%	1.4%	0.4%
American System Total	46,523	48,085	-3.2%	245,327	256,900	-4.5%	13.8%	16.5%
Continental Airlines	51,034	48,684	4.8%	231,232	232,958	-0.7%	13.0%	15.0%
Continental Express Carriers	2,148	2,314	-7.2%	16,416	15,839	3.6%	0.9%	1.0%
Continental System Total	53,182	50,998	4.3%	247,648	248,797	-0.5%	13.9%	16.0%
Delta Air Lines	33,863	26,109	29.7%	170,814	135,667	25.9%	9.6%	8.7%
Delta Express Carriers	9,942	10,764	-7.6%	46,939	46,269	1.4%	2.6%	3.0%
Delta System Total	43,805	36,873	18.8%	217,753	181,936	19.7%	12.2%	11.7%
ExpressJet	10,660	5,283	101.8%	51,222	5,320	863%	2.9%	0.3%
JetBlue	12,224	7,532	62.3%	42,830	36,831	16.3%	2.4%	2.4%
Northwest	16,126	17,212	-6.3%	72,789	81,473	-10.7%	4.1%	5.2%
Southwest	106,156	82,704	28.4%	486,466	392,699	23.9%	27.3%	25.2%
United Airlines	32,861	25,351	29.6%	161,771	116,960	38.3%	9.1%	7.5%
United Express Carriers	60	3,611	-98.3%	4,958	19,473	-74.5%	0.3%	1.3%
United System Total	32,921	28,962	13.7%	166,729	136,433	22.2%	9.4%	8.8%
US Airways	26,875	24,840	8.2%	127,397	121,279	5.0%	7.2%	7.8%
US Airways Express Carriers	8,219	5,562	47.8%	45,033	26,770	68.2%	2.5%	1.7%
US Airways System Total	35,094	30,402	15.4%	172,430	148,049	16.5%	9.7%	9.5%
<b>Total Domestic Scheduled</b>	<b>371,606</b>	<b>323,296</b>	<b>14.9%</b>	<b>1,772,872</b>	<b>1,554,239</b>	<b>14.1%</b>	<b>99.6%</b>	<b>99.8%</b>
<b>Charter</b>								
> Domestic	517	108	378.7%	4,782	214	2134.6%	0.3%	0.0%
International	634	424	49.5%	2,764	2,431	13.7%	0.2%	0.2%
> <b>Total Charter</b>	<b>1,151</b>	<b>532</b>	<b>116.4%</b>	<b>7,546</b>	<b>2,645</b>	<b>185.3%</b>	<b>0.4%</b>	<b>0.2%</b>
> <b>Total Deplanned</b>	<b>372,757</b>	<b>323,828</b>	<b>15.1%</b>	<b>1,780,418</b>	<b>1,556,884</b>	<b>14.4%</b>		

## LOUIS ARMSTRONG NEW ORLEANS INTERNATIONAL AIRPORT

## Summary of Freight and Mail Activity (Enplaned &amp; Deplaned Combined)

	Month		%	Year-to-Date		%	Market Share	
	May-08	May-07	Change	2008	2007	Change	2008	2007
<b>Domestic Freight &amp; Mail</b>								
AirTran Airways	0	0	0.0%	0	137,462	-100.0%	0.0%	0.4%
American Airlines	12,849	14,169	-9.3%	32,077	42,801	-25.1%	0.1%	0.1%
Continental Airlines	453,483	489,260	-7.3%	2,208,423	2,416,405	-8.6%	5.4%	6.5%
Delta Air Lines	184,506	130,196	41.7%	1,036,955	859,910	20.6%	2.5%	2.3%
Delta Express Carriers	521	4,971	-89.5%	18,754	16,687	12.4%	0.0%	0.0%
Northwest	18,562	11,631	59.6%	66,286	35,569	86.4%	0.2%	0.1%
Southwest Airlines	737,468	803,625	-8.2%	2,599,112	3,490,750	-25.5%	6.3%	9.3%
United Airlines	35,576	31,465	13.1%	174,134	150,528	15.7%	0.4%	0.4%
US Airways	0	56,901	-100.0%	49,121	208,671	-76.5%	0.1%	0.6%
US Airways Express Carriers	2,952	261	1031.0%	6,733	1,482	354.3%	0.0%	0.0%
ABX Air Inc.	1,083,921	1,165,808	-7.0%	4,566,870	2,415,305	89.1%	11.1%	6.5%
DHL	1,101,065	981,093	12.2%	5,796,568	6,333,721	-8.5%	14.1%	16.9%
Federal Express	3,144,292	2,969,512	5.9%	15,673,407	12,689,724	23.5%	38.2%	33.9%
UPS	1,751,977	1,861,097	-5.9%	8,707,641	8,530,741	2.1%	21.2%	22.8%
<b>Total Domestic</b>	<b>8,527,172</b>	<b>8,519,989</b>	<b>0.1%</b>	<b>40,936,081</b>	<b>37,329,756</b>	<b>9.7%</b>	<b>99.7%</b>	<b>99.7%</b>
<b>International Freight &amp; Mail</b>								
Delta Air Lines	25,482	16,962	50.2%	127,972	104,642	22.3%	0.3%	0.3%
<b>Total International</b>	<b>25,482</b>	<b>16,962</b>	<b>50.2%</b>	<b>127,972</b>	<b>104,642</b>	<b>22.3%</b>	<b>0.3%</b>	<b>0.3%</b>
<b>Total Freight and Mail</b>	<b>8,552,654</b>	<b>8,536,951</b>	<b>0.2%</b>	<b>41,064,053</b>	<b>37,434,398</b>	<b>9.7%</b>		
Total in Metric Tonnes	3,878.63	3,871.51		18,622.55	16,976.50			

## Summary of Air Freight and Mail (lbs.)

Domestic Enplaned	3,548,228	3,674,496	-3.4%	17,097,567	15,481,594	10.4%	41.6%	41.4%
Domestic Deplaned	4,978,944	4,845,493	2.8%	23,838,514	21,848,162	9.1%	58.1%	58.4%
International Enplaned	9,096	4,668	94.9%	27,667	34,335	-19.4%	0.1%	0.1%
International Deplaned	16,386	12,294	33.3%	100,305	70,307	42.7%	0.2%	0.2%
<b>Total</b>	<b>8,552,654</b>	<b>8,536,951</b>	<b>0.2%</b>	<b>41,064,053</b>	<b>37,434,398</b>	<b>9.7%</b>		

Note: All freight and express on international waybills is reported as International even if on domestic flights.

**LOUIS ARMSTRONG NEW ORLEANS INTERNATIONAL AIRPORT**

**Summary of Passenger Statistics**

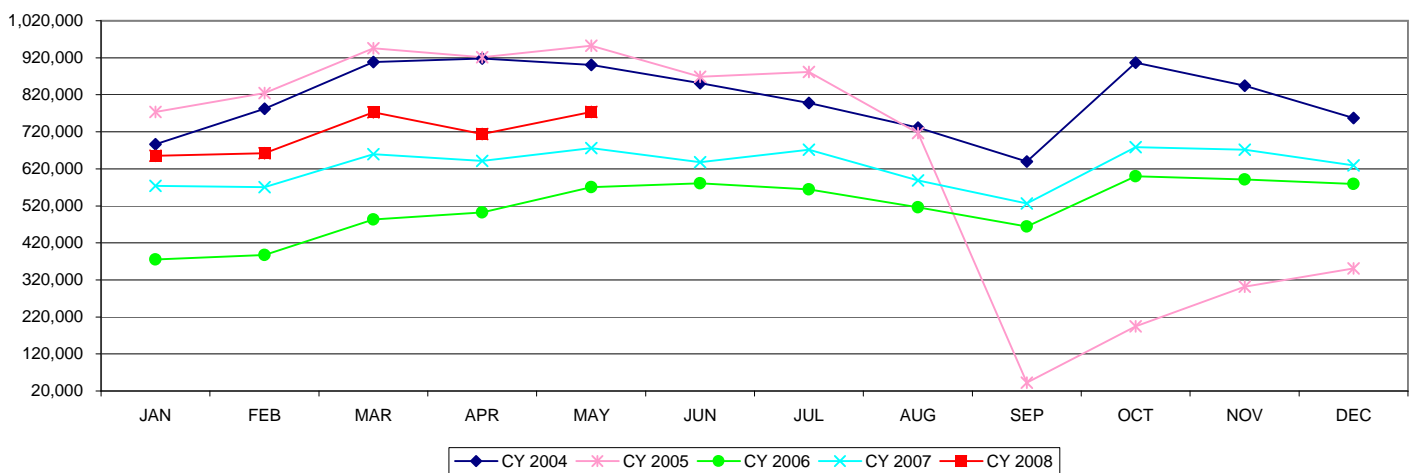
	Month		% Change	Year-to-Date		% Change	Market Share	
	May-08	May-07		2008	2007		2008	2007
<b>Enplaned Passengers</b>								
Domestic Scheduled	399,042	351,370	13.6%	1,789,106	1,567,574	14.1%	50.0%	50.1%
> Domestic Charter	952	201	373.6%	6,081	307	1880.8%	0.2%	0.0%
International Charter	632	900	-29.8%	2,545	2,760	-7.8%	0.1%	0.1%
<b>Deplaned Passengers</b>								
Domestic Scheduled	371,606	323,296	14.9%	1,772,872	1,554,239	14.1%	49.5%	49.7%
> Domestic Charter	517	108	378.7%	4,782	214	2134.6%	0.1%	0.0%
International Charter	634	424	49.5%	2,764	2,431	13.7%	0.1%	0.1%
<b>Total Passengers</b>								
Domestic Scheduled	770,648	674,666	14.2%	3,561,978	3,121,813	14.1%	99.5%	99.8%
> Domestic Charter	1,469	309	375.4%	10,863	521	1985.0%	0.3%	0.0%
International Charter	1,266	1,324	-4.4%	5,309	5,191	2.3%	0.1%	0.2%
> <b>Total</b>	<b>773,383</b>	<b>676,299</b>	<b>14.4%</b>	<b>3,578,150</b>	<b>3,127,525</b>	<b>14.4%</b>		

**Summary of Aircraft Operations**

Arrival Operations								
Domestic Passenger Airlines	4,054	3,449	17.5%	19,552	15,711	24.4%	96.7%	96.6%
Int'l Passenger Airlines	0	0	0.0%	0	0	0.0%	0.0%	0.0%
Domestic Charter Airlines	13	2	550.0%	80	3	2566.7%	0.4%	0.0%
Int'l Charter Airlines	1	6	-83.3%	2	13	-84.6%	0.0%	0.1%
All Cargo Airlines	123	112	9.8%	594	531	11.9%	2.9%	3.3%
<b>Total</b>	<b>4,191</b>	<b>3,569</b>	<b>17.4%</b>	<b>20,228</b>	<b>16,258</b>	<b>24.4%</b>		

Departure Operations								
Domestic Passenger Airlines	4,056	3,450	17.6%	19,551	15,718	24.4%	96.6%	96.7%
Int'l Passenger Airlines	0	0	0.0%	0	0	0.0%	0.0%	0.0%
Domestic Charter Airlines	10	1	900.0%	79	2	3850.0%	0.4%	0.0%
Int'l Charter Airlines	7	3	133.3%	8	9	-11.1%	0.0%	0.1%
All Cargo Airlines	122	112	8.9%	594	530	12.1%	2.9%	3.3%
<b>Total</b>	<b>4,195</b>	<b>3,566</b>	<b>17.6%</b>	<b>20,232</b>	<b>16,259</b>	<b>24.4%</b>		

**Total Passengers by Month**



**LOUIS ARMSTRONG NEW ORLEANS INTERNATIONAL AIRPORT**

**Summary of Enplaned Passengers by Airline**

	Month		%	Year-to-Date		%	Market Share	
	Apr-08	Apr-07	Change	2008	2007	Change	2008	2007
<b>Domestic Scheduled</b>								
AirTran Airways	12,838	14,590	-12.0%	55,653	51,097	10.0%	4.0%	4.2%
American Airlines	38,299	47,847	-20.0%	172,981	200,741	-13.8%	12.4%	16.5%
American Express Carriers	5,532	2,562	115.9%	21,620	2,562	743.9%	1.5%	0.2%
American System Total	43,831	50,409	-13.0%	194,601	203,303	-4.3%	13.9%	16.7%
Continental Airlines	47,814	46,862	2.0%	182,359	183,355	-0.5%	13.1%	15.1%
Continental Express Carriers	2,840	2,965	-4.2%	14,463	14,232	1.6%	1.0%	1.2%
Continental System Total	50,654	49,827	1.7%	196,822	197,587	-0.4%	14.1%	16.2%
Delta Air Lines	34,786	29,403	18.3%	134,426	107,078	25.5%	9.6%	8.8%
Delta Express Carriers	7,001	8,480	-17.4%	34,904	36,170	-3.5%	2.5%	3.0%
Delta System Total	41,787	37,883	10.3%	169,330	143,248	18.2%	12.1%	11.8%
ExpressJet	10,410	38	27294.7%	41,341	38	108692%	3.0%	0.0%
JetBlue	7,564	7,899	-4.2%	29,624	29,707	-0.3%	2.1%	2.4%
Northwest	14,704	16,470	-10.7%	56,098	62,531	-10.3%	4.0%	5.1%
Southwest	98,897	81,472	21.4%	380,046	308,293	23.3%	27.2%	25.3%
United Airlines	34,237	23,942	43.0%	126,942	89,530	41.8%	9.1%	7.3%
United Express Carriers	0	3,445	-100.0%	4,615	15,670	-70.5%	0.3%	1.3%
United System Total	34,237	27,387	25.0%	131,557	105,200	25.1%	9.4%	8.6%
US Airways	27,652	24,847	11.3%	99,892	96,518	3.5%	7.1%	7.9%
US Airways Express Carriers	8,689	4,815	80.5%	35,100	18,682	87.9%	2.5%	1.5%
US Airways System Total	36,341	29,662	22.5%	134,992	115,200	17.2%	9.7%	9.5%
<b>Total Domestic Scheduled</b>	<b>351,263</b>	<b>315,637</b>	<b>11.3%</b>	<b>1,390,064</b>	<b>1,216,204</b>	<b>14.3%</b>	<b>99.5%</b>	<b>99.8%</b>
<b>Charter</b>								
> Domestic	997	0	100.0%	5,129	106	4738.7%	0.4%	0.0%
International	68	0	100.0%	1,913	1,860	2.8%	0.1%	0.2%
> <b>Total Charter</b>	<b>1,065</b>	<b>0</b>	<b>100.0%</b>	<b>7,042</b>	<b>1,966</b>	<b>258.2%</b>	<b>0.5%</b>	<b>0.2%</b>
> <b>Total Enplaned</b>	<b>352,328</b>	<b>315,637</b>	<b>11.6%</b>	<b>1,397,106</b>	<b>1,218,170</b>	<b>14.7%</b>		

**LOUIS ARMSTRONG NEW ORLEANS INTERNATIONAL AIRPORT**

**Summary of Deplaned Passengers by Airline**

	Month		%	Year-to-Date		%	Market Share	
	Apr-08	Apr-07	Change	2008	2007	Change	2008	2007
<b>Domestic Scheduled</b>								
AirTran Airways	12,984	14,789	-12.2%	54,763	50,556	10.0%	3.9%	4.1%
American Airlines	40,353	49,892	-19.1%	178,100	206,092	-13.6%	12.7%	16.7%
American Express Carriers	5,232	2,723	92.1%	20,704	2,723	660.3%	1.5%	0.2%
American System Total	45,585	52,615	-13.4%	198,804	208,815	-4.8%	14.1%	16.9%
Continental Airlines	49,720	49,017	1.4%	180,198	184,274	-2.2%	12.8%	14.9%
Continental Express Carriers	2,741	2,986	-8.2%	14,268	13,525	5.5%	1.0%	1.1%
Continental System Total	52,461	52,003	0.9%	194,466	197,799	-1.7%	13.8%	16.0%
Delta Air Lines	36,209	30,501	18.7%	136,951	109,558	25.0%	9.7%	8.9%
Delta Express Carriers	7,452	9,105	-18.2%	36,997	35,505	4.2%	2.6%	2.9%
Delta System Total	43,661	39,606	10.2%	173,948	145,063	19.9%	12.4%	11.8%
ExpressJet	10,410	37	28035.1%	40,562	37	109527%	2.9%	0.0%
JetBlue	7,848	7,675	2.3%	30,606	29,299	4.5%	2.2%	2.4%
Northwest	14,892	16,692	-10.8%	56,663	64,261	-11.8%	4.0%	5.2%
Southwest	101,331	82,661	22.6%	380,310	309,995	22.7%	27.0%	25.1%
United Airlines	35,029	25,489	37.4%	128,910	91,609	40.7%	9.2%	7.4%
United Express Carriers	0	3,390	-100.0%	4,898	15,862	-69.1%	0.3%	1.3%
United System Total	35,029	28,879	21.3%	133,808	107,471	24.5%	9.5%	8.7%
US Airways	28,414	25,026	13.5%	100,522	96,439	4.2%	7.1%	7.8%
US Airways Express Carriers	8,787	5,560	58.0%	36,814	21,208	73.6%	2.6%	1.7%
US Airways System Total	37,201	30,586	21.6%	137,336	117,647	16.7%	9.8%	9.5%
<b>Total Domestic Scheduled</b>	<b>361,402</b>	<b>325,543</b>	<b>11.0%</b>	<b>1,401,266</b>	<b>1,230,943</b>	<b>13.8%</b>	<b>99.5%</b>	<b>99.8%</b>
<b>Charter</b>								
> Domestic	620	0	100.0%	4,265	106	3923.6%	0.3%	0.0%
International	0	0	0.0%	2,130	2,007	6.1%	0.2%	0.2%
> <b>Total Charter</b>	<b>620</b>	<b>0</b>	<b>100.0%</b>	<b>6,395</b>	<b>2,113</b>	<b>202.7%</b>	<b>0.5%</b>	<b>0.2%</b>
> <b>Total Deplaned</b>	<b>362,022</b>	<b>325,543</b>	<b>11.2%</b>	<b>1,407,661</b>	<b>1,233,056</b>	<b>14.2%</b>		

**LOUIS ARMSTRONG NEW ORLEANS INTERNATIONAL AIRPORT**

**Summary of Freight and Mail Activity (Enplaned & Deplaned Combined)**

	Month		% Change	Year-to-Date		% Change	Market Share	
	Apr-08	Apr-07		2008	2007		2008	2007
<b>Domestic Freight &amp; Mail</b>								
AirTran Airways	0	72,545	-100.0%	0	137,462	-100.0%	0.0%	0.5%
American Airlines	249	6,612	-96.2%	19,228	28,632	-32.8%	0.1%	0.1%
Continental Airlines	410,064	489,543	-16.2%	1,754,940	1,927,145	-8.9%	5.4%	6.7%
Delta Air Lines	217,950	154,307	41.2%	852,449	729,714	16.8%	2.6%	2.5%
Delta Express Carriers	2,213	2,747	-19.4%	18,233	11,716	55.6%	0.1%	0.0%
Northwest	12,070	12,538	-3.7%	47,724	23,938	99.4%	0.1%	0.1%
Southwest Airlines	627,509	635,859	-1.3%	1,861,644	2,687,125	-30.7%	5.7%	9.3%
United Airlines	43,055	30,769	39.9%	138,558	119,063	16.4%	0.4%	0.4%
US Airways	33,495	47,143	-29.0%	49,121	151,770	-67.6%	0.2%	0.5%
US Airways Express Carriers	2,198	415	429.6%	3,781	1,221	209.7%	0.0%	0.0%
ABX Air Inc.	1,239,665	876,584	41.4%	3,482,949	1,249,497	178.7%	10.7%	4.3%
DHL	1,030,114	883,668	16.6%	4,695,503	5,352,628	-12.3%	14.4%	18.5%
Federal Express	3,629,822	2,775,096	30.8%	12,529,115	9,720,212	28.9%	38.5%	33.6%
UPS	1,732,885	1,666,600	4.0%	6,955,664	6,669,644	4.3%	21.4%	23.1%
<b>Total Domestic</b>	<b>8,981,289</b>	<b>7,654,426</b>	<b>17.3%</b>	<b>32,408,909</b>	<b>28,809,767</b>	<b>12.5%</b>	<b>99.7%</b>	<b>99.7%</b>
<b>International Freight &amp; Mail</b>								
Delta Air Lines	24,378	22,742	7.2%	102,490	87,680	16.9%	0.3%	0.3%
<b>Total International</b>	<b>24,378</b>	<b>22,742</b>	<b>7.2%</b>	<b>102,490</b>	<b>87,680</b>	<b>16.9%</b>	<b>0.3%</b>	<b>0.3%</b>
<b>Total Freight and Mail</b>	<b>9,005,667</b>	<b>7,677,168</b>	<b>17.3%</b>	<b>32,511,399</b>	<b>28,897,447</b>	<b>12.5%</b>		
Total in Metric Tonnes	4,084.07	3,481.60		14,743.92	13,104.99			

**Summary of Air Freight and Mail (lbs.)**

Domestic Enplaned	3,738,082	3,228,239	15.8%	13,549,339	11,807,098	14.8%	41.7%	40.9%
Domestic Deplaned	5,243,207	4,426,187	18.5%	18,859,570	17,002,669	10.9%	58.0%	58.8%
International Enplaned	2,120	7,424	-71.4%	18,571	29,667	-37.4%	0.1%	0.1%
International Deplaned	22,258	15,318	45.3%	83,919	58,013	44.7%	0.3%	0.2%
<b>Total</b>	<b>9,005,667</b>	<b>7,677,168</b>	<b>17.3%</b>	<b>32,511,399</b>	<b>28,897,447</b>	<b>12.5%</b>		

Note: All freight and express on international waybills is reported as International even if on domestic flights.

**LOUIS ARMSTRONG NEW ORLEANS INTERNATIONAL AIRPORT**

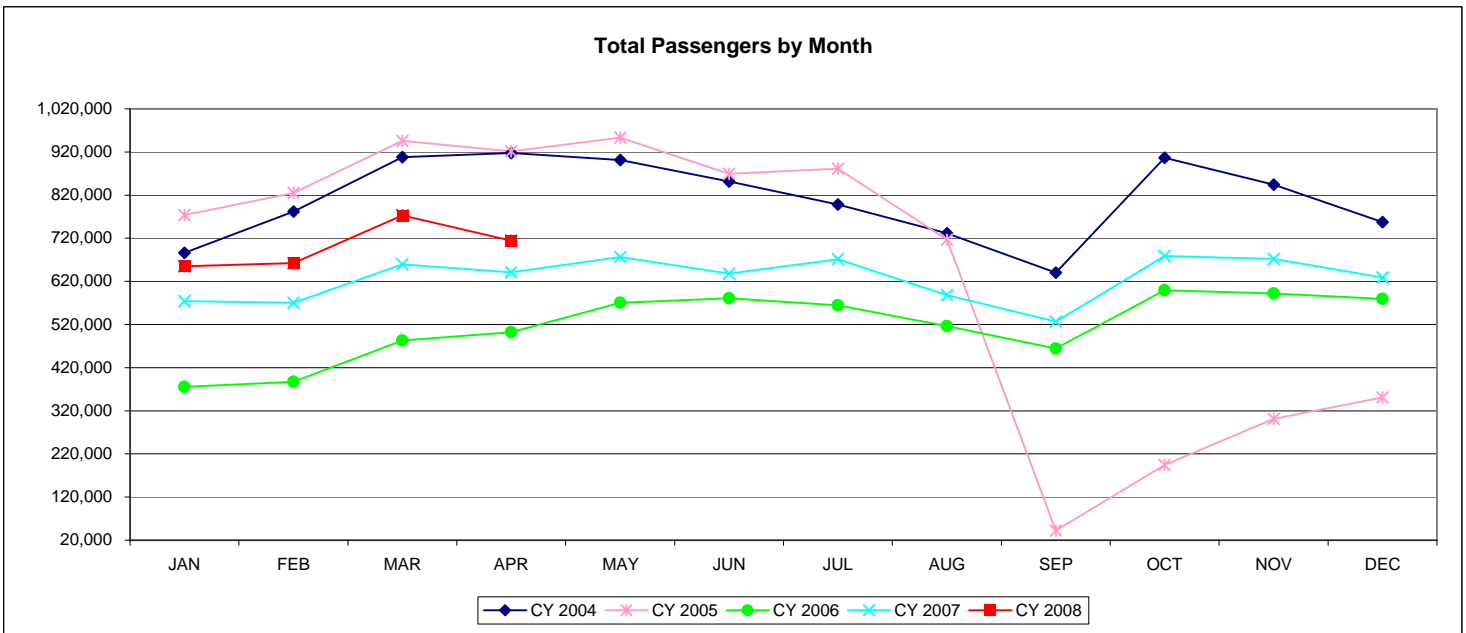
**Summary of Passenger Statistics**

	Month		% Change	Year-to-Date		% Change	Market Share	
	Apr-08	Apr-07		2008	2007		2008	2007
<b>Enplaned Passengers</b>								
Domestic Scheduled	351,263	315,637	11.3%	1,390,064	1,216,204	14.3%	49.6%	49.6%
> Domestic Charter	997	0	100.0%	5,129	106	4738.7%	0.2%	0.0%
International Charter	68	0	100.0%	1,913	1,860	2.8%	0.1%	0.1%
<b>Deplaned Passengers</b>								
Domestic Scheduled	361,402	325,543	11.0%	1,401,266	1,230,943	13.8%	50.0%	50.2%
> Domestic Charter	620	0	100.0%	4,265	106	3923.6%	0.2%	0.0%
International Charter	0	0	0.0%	2,130	2,007	6.1%	0.1%	0.1%
<b>Total Passengers</b>								
Domestic Scheduled	712,665	641,180	11.1%	2,791,330	2,447,147	14.1%	99.5%	99.8%
> Domestic Charter	1,617	0	100.0%	9,394	212	4331.1%	0.3%	0.0%
International Charter	68	0	100.0%	4,043	3,867	4.6%	0.1%	0.2%
> <b>Total</b>	<b>714,350</b>	<b>641,180</b>	<b>11.4%</b>	<b>2,804,767</b>	<b>2,451,226</b>	<b>14.4%</b>		

**Summary of Aircraft Operations**

Arrival Operations								
Domestic Passenger Airlines	3,870	3,105	24.6%	15,498	12,262	26.4%	96.6%	96.6%
Domestic Charter Airlines	18	0	100.0%	67	1	6600.0%	0.4%	0.0%
Int'l Charter Airlines	0	0	0.0%	1	7	-85.7%	0.0%	0.1%
All Cargo Airlines	130	100	30.0%	471	419	12.4%	2.9%	3.3%
<b>Total</b>	<b>4,018</b>	<b>3,205</b>	<b>25.4%</b>	<b>16,037</b>	<b>12,689</b>	<b>26.4%</b>		
Departure Operations								
Domestic Passenger Airlines	3,872	3,108	24.6%	15,495	12,268	26.3%	96.6%	96.7%
Domestic Charter Airlines	19	0	100.0%	69	1	6800.0%	0.4%	0.0%
Int'l Charter Airlines	1	0	100.0%	1	6	-83.3%	0.0%	0.0%
All Cargo Airlines	130	100	30.0%	472	418	12.9%	2.9%	3.3%
<b>Total</b>	<b>4,022</b>	<b>3,208</b>	<b>25.4%</b>	<b>16,037</b>	<b>12,693</b>	<b>26.3%</b>		

**Total Passengers by Month**





## LOUIS ARMSTRONG NEW ORLEANS INTERNATIONAL AIRPORT

## Summary of Enplaned Passengers by Airline

	Month		%	Year-to-Date		%	Market Share	
	Mar-08	Mar-07	Change	2008	2007	Change	2008	2007
<b>Domestic Scheduled</b>								
AirTran Airways	14,888	15,054	-1.1%	42,815	36,507	20.0%	4.1%	4.0%
American Airlines	50,011	57,542	-13.1%	134,682	152,894	-11.9%	12.9%	16.9%
American Express Carriers	6,123	0	100.0%	16,088	0	100.0%	1.5%	0.0%
American System Total	56,134	57,542	-2.4%	150,770	152,894	-1.4%	14.4%	16.9%
Continental Airlines	44,349	47,553	-6.7%	134,545	136,493	-1.4%	12.9%	15.1%
Continental Express Carriers	4,537	3,764	20.5%	11,623	11,267	3.2%	1.1%	1.2%
Continental System Total	48,886	51,317	-4.7%	146,168	147,760	-1.1%	14.0%	16.4%
Delta Air Lines	40,461	35,283	14.7%	99,640	77,675	28.3%	9.5%	8.6%
Delta Express Carriers	8,690	7,801	11.4%	27,903	27,690	0.8%	2.7%	3.1%
Delta System Total	49,151	43,084	14.1%	127,543	105,365	21.0%	12.2%	11.7%
ExpressJet	11,914	0	100.0%	30,931	0	100.0%	3.0%	0.0%
JetBlue	7,896	7,816	1.0%	22,060	21,808	1.2%	2.1%	2.4%
Northwest	15,574	17,250	-9.7%	41,394	46,061	-10.1%	4.0%	5.1%
Southwest	104,099	82,901	25.6%	281,149	226,821	24.0%	26.9%	25.1%
United Airlines	38,182	25,574	49.3%	92,705	65,588	41.3%	8.9%	7.3%
United Express Carriers	298	3,489	-91.5%	4,615	12,225	-62.2%	0.4%	1.4%
United System Total	38,480	29,063	32.4%	97,320	77,813	25.1%	9.3%	8.6%
US Airways	27,428	26,125	5.0%	72,240	71,671	0.8%	6.9%	7.9%
US Airways Express Carriers	10,768	5,123	110.2%	26,411	13,867	90.5%	2.5%	1.5%
US Airways System Total	38,196	31,248	22.2%	98,651	85,538	15.3%	9.4%	9.5%
<b>Total Domestic Scheduled</b>	<b>385,218</b>	<b>335,275</b>	<b>14.9%</b>	<b>1,038,801</b>	<b>900,567</b>	<b>15.3%</b>	<b>99.4%</b>	<b>99.8%</b>
<b>Charter</b>								
> Domestic	1,404	0	100.0%	4,132	106	3798.1%	0.4%	0.0%
International	0	0	0.0%	1,845	1,860	-0.8%	0.2%	0.2%
> <b>Total Charter</b>	<b>1,404</b>	<b>0</b>	<b>100.0%</b>	<b>5,977</b>	<b>1,966</b>	<b>204.0%</b>	<b>0.6%</b>	<b>0.2%</b>
> <b>Total Enplaned</b>	<b>386,622</b>	<b>335,275</b>	<b>15.3%</b>	<b>1,044,778</b>	<b>902,533</b>	<b>15.8%</b>		

## LOUIS ARMSTRONG NEW ORLEANS INTERNATIONAL AIRPORT

## Summary of Deplanned Passengers by Airline

	Month		%	Year-to-Date		%	Market Share	
	Mar-08	Mar-07	Change	2008	2007	Change	2008	2007
<b>Domestic Scheduled</b>								
AirTran Airways	14,201	14,591	-2.7%	41,779	35,767	20.0%	4.0%	3.9%
American Airlines	51,297	56,323	-8.9%	137,747	156,200	-11.8%	13.2%	17.2%
American Express Carriers	5,641	0	100.0%	15,472	0	100.0%	1.5%	0.0%
American System Total	56,938	56,323	1.1%	153,219	156,200	-1.9%	14.7%	17.2%
Continental Airlines	43,813	46,689	-6.2%	130,478	135,257	-3.5%	12.5%	14.9%
Continental Express Carriers	4,228	3,373	25.3%	11,527	10,539	9.4%	1.1%	1.2%
Continental System Total	48,041	50,062	-4.0%	142,005	145,796	-2.6%	13.6%	16.1%
Delta Air Lines	40,069	36,417	10.0%	100,742	79,057	27.4%	9.6%	8.7%
Delta Express Carriers	9,717	6,335	53.4%	29,545	26,400	11.9%	2.8%	2.9%
Delta System Total	49,786	42,752	16.5%	130,287	105,457	23.5%	12.5%	11.6%
ExpressJet	11,687	0	100.0%	30,152	0	100.0%	2.9%	0.0%
JetBlue	8,001	7,584	5.5%	22,758	21,624	5.2%	2.2%	2.4%
Northwest	15,342	17,209	-10.8%	41,771	47,569	-12.2%	4.0%	5.2%
Southwest	104,544	81,364	28.5%	278,979	227,334	22.7%	26.7%	25.1%
United Airlines	38,552	25,737	49.8%	93,881	66,120	42.0%	9.0%	7.3%
United Express Carriers	366	3,460	-89.4%	4,898	12,472	-60.7%	0.5%	1.4%
United System Total	38,918	29,197	33.3%	98,779	78,592	25.7%	9.4%	8.7%
US Airways	26,968	25,702	4.9%	72,108	71,413	1.0%	6.9%	7.9%
US Airways Express Carriers	10,590	5,481	93.2%	28,027	15,648	79.1%	2.7%	1.7%
US Airways System Total	37,558	31,183	20.4%	100,135	87,061	15.0%	9.6%	9.6%
<b>Total Domestic Scheduled</b>	<b>385,016</b>	<b>330,265</b>	<b>16.6%</b>	<b>1,039,864</b>	<b>905,400</b>	<b>14.9%</b>	<b>99.4%</b>	<b>99.8%</b>
<b>Charter</b>								
> Domestic	1,054	0	100.0%	3,645	106	3338.7%	0.3%	0.0%
International	66	0	100.0%	2,130	2,007	6.1%	0.2%	0.2%
> <b>Total Charter</b>	<b>1,120</b>	<b>0</b>	<b>100.0%</b>	<b>5,775</b>	<b>2,113</b>	<b>173.3%</b>	<b>0.6%</b>	<b>0.2%</b>
> <b>Total Deplanned</b>	<b>386,136</b>	<b>330,265</b>	<b>16.9%</b>	<b>1,045,639</b>	<b>907,513</b>	<b>15.2%</b>		

**LOUIS ARMSTRONG NEW ORLEANS INTERNATIONAL AIRPORT**

**Summary of Freight and Mail Activity (Enplaned & Deplaned Combined)**

	Month		%	Year-to-Date		%	Market Share	
	Mar-08	Mar-07	Change	2008	2007	Change	2008	2007
<b>Domestic Freight &amp; Mail</b>								
AirTran Airways	0	51,573	-100.0%	0	64,917	-100.0%	0.0%	0.3%
American Airlines	2,669	9,158	-70.9%	18,979	22,020	-13.8%	0.1%	0.1%
Continental Airlines	436,291	510,777	-14.6%	1,344,876	1,437,602	-6.5%	5.7%	6.8%
Delta Air Lines	203,181	189,902	7.0%	634,499	575,407	10.3%	2.7%	2.7%
Delta Express Carriers	2,204	543	305.9%	16,020	8,969	78.6%	0.1%	0.0%
Northwest	11,757	5,287	122.4%	35,654	11,400	212.8%	0.2%	0.1%
Southwest Airlines	0	701,259	-100.0%	1,234,135	2,051,266	-39.8%	5.3%	9.7%
United Airlines	11,792	32,660	-63.9%	95,503	88,294	8.2%	0.4%	0.4%
US Airways	15,626	38,347	-59.3%	15,626	104,627	-85.1%	0.1%	0.5%
US Airways Express Carriers	295	402	-26.6%	1,583	806	96.4%	0.0%	0.0%
ABX Air Inc.	1,185,640	262,261	352.1%	2,243,284	372,913	501.6%	9.5%	1.8%
DHL	985,307	1,459,691	-32.5%	3,665,389	4,468,960	-18.0%	15.6%	21.1%
Federal Express	2,984,705	1,146,593	160.3%	8,899,293	6,945,116	28.1%	37.9%	32.7%
UPS	1,703,763	2,071,230	-17.7%	5,222,779	5,003,044	4.4%	22.2%	23.6%
<b>Total Domestic</b>	<b>7,543,230</b>	<b>6,479,683</b>	<b>16.4%</b>	<b>23,427,620</b>	<b>21,155,341</b>	<b>10.7%</b>	<b>99.7%</b>	<b>99.7%</b>
<b>International Freight &amp; Mail</b>								
Delta Air Lines	35,224	29,926	17.7%	78,112	64,938	20.3%	0.3%	0.3%
<b>Total International</b>	<b>35,224</b>	<b>29,926</b>	<b>17.7%</b>	<b>78,112</b>	<b>64,938</b>	<b>20.3%</b>	<b>0.3%</b>	<b>0.3%</b>
<b>Total Freight and Mail</b>	<b>7,578,454</b>	<b>6,509,609</b>	<b>16.4%</b>	<b>23,505,732</b>	<b>21,220,279</b>	<b>10.8%</b>		
Total in Metric Tonnes	3,436.83	2,952.11		10,659.85	9,623.40			

**Summary of Air Freight and Mail (lbs.)**

Domestic Enplaned	3,014,119	2,571,210	17.2%	9,811,257	8,578,859	14.4%	41.7%	40.4%
Domestic Deplaned	4,529,111	3,908,473	15.9%	13,616,363	12,576,482	8.3%	57.9%	59.3%
International Enplaned	8,094	4,421	83.1%	16,451	22,243	-26.0%	0.1%	0.1%
International Deplaned	27,130	25,505	6.4%	61,661	42,695	44.4%	0.3%	0.2%
<b>Total</b>	<b>7,578,454</b>	<b>6,509,609</b>	<b>16.4%</b>	<b>23,505,732</b>	<b>21,220,279</b>	<b>10.8%</b>		

Note: All freight and express on international waybills is reported as International even if on domestic flights.

**LOUIS ARMSTRONG NEW ORLEANS INTERNATIONAL AIRPORT**

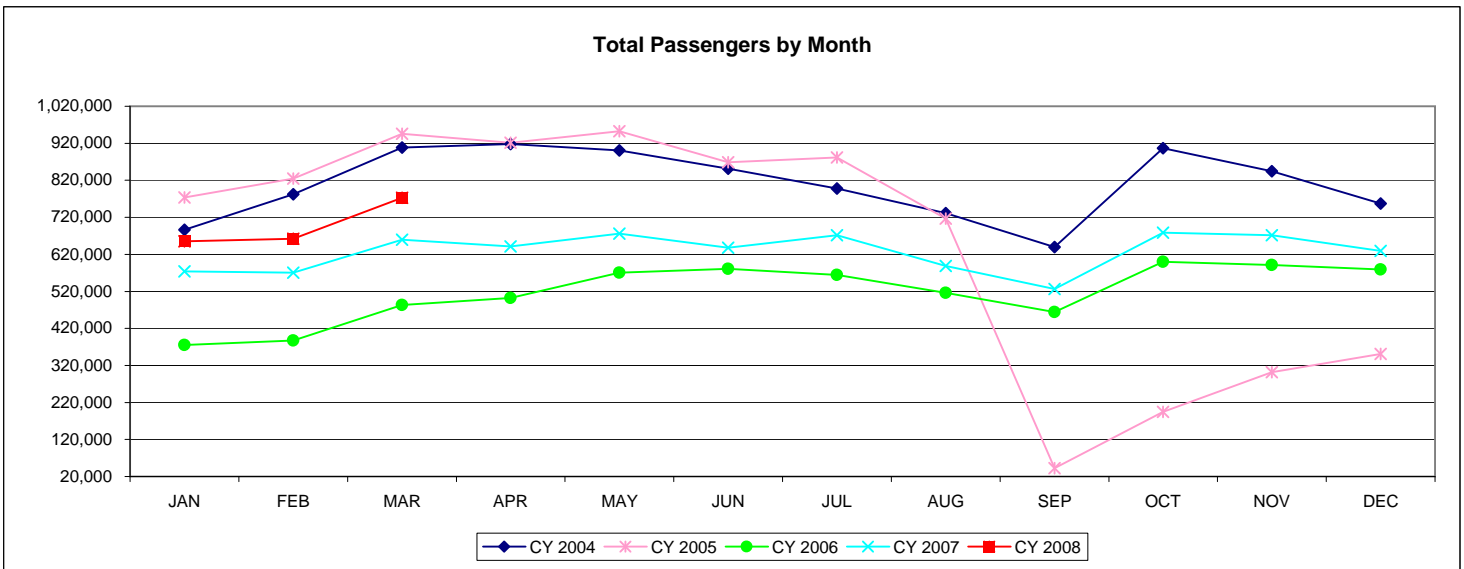
**Summary of Passenger Statistics**

	Month		% Change	Year-to-Date		% Change	Market Share	
	Mar-08	Mar-07		2008	2007		2008	2007
<b>Enplaned Passengers</b>								
Domestic Scheduled	385,218	335,275	14.9%	1,038,801	900,567	15.3%	49.7%	49.8%
> Domestic Charter	1,404	0	100.0%	4,132	106	3798.1%	0.2%	0.0%
International Charter	0	0	0.0%	1,845	1,860	-0.8%	0.1%	0.1%
<b>Deplaned Passengers</b>								
Domestic Scheduled	385,016	330,265	16.6%	1,039,864	905,400	14.9%	49.7%	50.0%
> Domestic Charter	1,054	0	100.0%	3,645	106	3338.7%	0.2%	0.0%
International Charter	66	0	100.0%	2,130	2,007	6.1%	0.1%	0.1%
<b>Total Passengers</b>								
Domestic Scheduled	770,234	665,540	15.7%	2,078,665	1,805,967	15.1%	99.4%	99.8%
> Domestic Charter	2,458	0	100.0%	7,777	212	3568.4%	0.4%	0.0%
International Charter	66	0	100.0%	3,975	3,867	2.8%	0.2%	0.2%
> <b>Total</b>	<b>772,758</b>	<b>665,540</b>	<b>16.1%</b>	<b>2,090,417</b>	<b>1,810,046</b>	<b>15.5%</b>		

**Summary of Aircraft Operations**

Arrival Operations								
Domestic Passenger Airlines	3,863	3,232	19.5%	11,628	9,157	27.0%	96.7%	96.6%
Domestic Charter Airlines	18	0	100.0%	49	1	4800.0%	0.4%	0.0%
Int'l Charter Airlines	1	0	100.0%	1	7	-85.7%	0.0%	0.1%
All Cargo Airlines	114	115	-0.9%	341	319	6.9%	2.8%	3.4%
<b>Total</b>	<b>3,996</b>	<b>3,347</b>	<b>19.4%</b>	<b>12,019</b>	<b>9,484</b>	<b>26.7%</b>		
Departure Operations								
Domestic Passenger Airlines	3,859	3,233	19.4%	11,623	9,160	26.9%	96.7%	96.6%
Domestic Charter Airlines	19	0	100.0%	50	1	4900.0%	0.4%	0.0%
Int'l Charter Airlines	0	0	0.0%	0	6	-100.0%	0.0%	0.1%
All Cargo Airlines	115	115	0.0%	342	318	7.5%	2.8%	3.4%
<b>Total</b>	<b>3,993</b>	<b>3,348</b>	<b>19.3%</b>	<b>12,015</b>	<b>9,485</b>	<b>26.7%</b>		

**Total Passengers by Month**



**LOUIS ARMSTRONG NEW ORLEANS INTERNATIONAL AIRPORT**

**Summary of Enplaned Passengers by Airline**

	Month		%	Year-to-Date		%	Market Share	
	Feb-08	Feb-07	Change	2008	2007	Change	2008	2007
<b>Domestic Scheduled</b>								
AirTran Airways	14,199	11,322	25.4%	27,927	21,453	30.0%	4.2%	3.8%
American Airlines	42,620	47,614	-10.5%	84,671	95,352	-11.2%	12.9%	16.8%
American Express Carriers	5,010	0	100.0%	9,965	0	100.0%	1.5%	0.0%
American System Total	47,630	47,614	0.0%	94,636	95,352	-0.8%	14.4%	16.8%
Continental Airlines	45,287	45,774	-1.1%	90,196	88,940	1.4%	13.7%	15.7%
Continental Express Carriers	4,280	3,916	9.3%	7,086	7,503	-5.6%	1.1%	1.3%
Continental System Total	49,567	49,690	-0.2%	97,282	96,443	0.9%	14.8%	17.0%
Delta Air Lines	32,580	21,548	51.2%	59,179	42,392	39.6%	9.0%	7.5%
Delta Express Carriers	8,091	9,744	-17.0%	19,213	19,889	-3.4%	2.9%	3.5%
Delta System Total	40,671	31,292	30.0%	78,392	62,281	25.9%	11.9%	11.0%
ExpressJet	9,736	0	100.0%	19,017	0	100.0%	2.9%	0.0%
JetBlue	6,752	6,457	4.6%	14,164	13,992	1.2%	2.2%	2.5%
Northwest	13,268	13,695	-3.1%	25,820	28,811	-10.4%	3.9%	5.1%
Southwest	90,298	71,416	26.4%	177,050	143,920	23.0%	26.9%	25.4%
United Airlines	29,277	19,627	49.2%	54,523	40,014	36.3%	8.3%	7.1%
United Express Carriers	1,249	3,657	-65.8%	4,317	8,736	-50.6%	0.7%	1.5%
United System Total	30,526	23,284	31.1%	58,840	48,750	20.7%	8.9%	8.6%
US Airways	21,979	22,423	-2.0%	44,812	45,546	-1.6%	6.8%	8.0%
US Airways Express Carriers	8,580	4,418	94.2%	15,643	8,744	78.9%	2.4%	1.5%
US Airways System Total	30,559	26,841	13.9%	60,455	54,290	11.4%	9.2%	9.6%
<b>Total Domestic Scheduled</b>	<b>333,206</b>	<b>281,611</b>	<b>18.3%</b>	<b>653,583</b>	<b>565,292</b>	<b>15.6%</b>	<b>99.3%</b>	<b>99.7%</b>
<b>Charter</b>								
> Domestic	856	106	707.5%	2,728	106	2473.6%	0.4%	0.0%
International	0	1,860	-100.0%	1,845	1,860	-0.8%	0.3%	0.3%
> <b>Total Charter</b>	<b>856</b>	<b>1,966</b>	<b>-56.5%</b>	<b>4,573</b>	<b>1,966</b>	<b>132.6%</b>	<b>0.7%</b>	<b>0.3%</b>
> <b>Total Enplaned</b>	<b>334,062</b>	<b>283,577</b>	<b>17.8%</b>	<b>658,156</b>	<b>567,258</b>	<b>16.0%</b>		

## LOUIS ARMSTRONG NEW ORLEANS INTERNATIONAL AIRPORT

## Summary of Deplaned Passengers by Airline

	Month		%	Year-to-Date		%	Market Share	
	Feb-08	Feb-07	Change	2008	2007	Change	2008	2007
<b>Domestic Scheduled</b>								
AirTran Airways	13,819	11,474	20.4%	27,578	21,176	30.0%	4.2%	3.7%
American Airlines	41,839	48,983	-14.6%	86,450	99,877	-13.4%	13.1%	17.3%
American Express Carriers	4,837	0	100.0%	9,831	0	100.0%	1.5%	0.0%
American System Total	46,676	48,983	-4.7%	96,281	99,877	-3.6%	14.6%	17.3%
Continental Airlines	42,605	45,649	-6.7%	86,665	88,568	-2.1%	13.1%	15.3%
Continental Express Carriers	4,476	3,690	21.3%	7,299	7,166	1.9%	1.1%	1.2%
Continental System Total	47,081	49,339	-4.6%	93,964	95,734	-1.8%	14.2%	16.6%
Delta Air Lines	32,738	21,910	49.4%	60,673	42,640	42.3%	9.2%	7.4%
Delta Express Carriers	8,480	8,205	3.4%	19,828	20,065	-1.2%	3.0%	3.5%
Delta System Total	41,218	30,115	36.9%	80,501	62,705	28.4%	12.2%	10.9%
ExpressJet	9,247	0	100.0%	18,465	0	100.0%	2.8%	0.0%
JetBlue	6,879	6,498	5.9%	14,757	14,040	5.1%	2.2%	2.4%
Northwest	13,090	14,442	-9.4%	26,429	30,360	-12.9%	4.0%	5.3%
Southwest	87,621	73,200	19.7%	174,435	145,970	19.5%	26.4%	25.3%
United Airlines	29,367	19,770	48.5%	55,329	40,383	37.0%	8.4%	7.0%
United Express Carriers	1,241	3,724	-66.7%	4,532	9,012	-49.7%	0.7%	1.6%
United System Total	30,608	23,494	30.3%	59,861	49,395	21.2%	9.1%	8.6%
US Airways	21,819	22,389	-2.5%	45,140	45,711	-1.2%	6.8%	7.9%
US Airways Express Carriers	9,330	4,832	93.1%	17,437	10,167	71.5%	2.6%	1.8%
US Airways System Total	31,149	27,221	14.4%	62,577	55,878	12.0%	9.5%	9.7%
<b>Total Domestic Scheduled</b>	<b>327,388</b>	<b>284,766</b>	<b>15.0%</b>	<b>654,848</b>	<b>575,135</b>	<b>13.9%</b>	<b>99.3%</b>	<b>99.6%</b>
<b>Charter</b>								
> Domestic	984	106	828.3%	2,591	106	2344.3%	0.4%	0.0%
International	0	1,835	-100.0%	2,064	2,007	2.8%	0.3%	0.3%
> <b>Total Charter</b>	<b>984</b>	<b>1,941</b>	<b>-49.3%</b>	<b>4,655</b>	<b>2,113</b>	<b>120.3%</b>	<b>0.7%</b>	<b>0.4%</b>
> <b>Total Deplaned</b>	<b>328,372</b>	<b>286,707</b>	<b>14.5%</b>	<b>659,503</b>	<b>577,248</b>	<b>14.2%</b>		

**LOUIS ARMSTRONG NEW ORLEANS INTERNATIONAL AIRPORT**

**Summary of Freight and Mail Activity (Enplaned & Deplaned Combined)**

	Month		%	Year-to-Date		%	Market Share	
	Feb-08	Feb-07	Change	2008	2007	Change	2008	2007
<b>Domestic Freight &amp; Mail</b>								
AirTran Airways	0	13,344	-100.0%	0	13,344	-100.0%	0.0%	0.1%
American Airlines	393	11,862	-96.7%	16,310	12,862	26.8%	0.1%	0.1%
Continental Airlines	556,458	559,160	-0.5%	908,585	926,825	-2.0%	5.7%	6.3%
Delta Air Lines	141,498	194,104	-27.1%	431,318	385,505	11.9%	2.7%	2.6%
Delta Express Carriers	6,607	4,690	40.9%	13,816	8,426	64.0%	0.1%	0.1%
Northwest	12,357	2,534	387.6%	23,897	6,113	290.9%	0.2%	0.0%
Southwest Airlines	647,539	665,112	-2.6%	1,234,135	1,350,007	-8.6%	7.7%	9.2%
United Airlines	44,082	34,230	28.8%	83,711	55,634	50.5%	0.5%	0.4%
US Airways	0	29,671	-100.0%	0	66,280	-100.0%	0.0%	0.5%
US Airways Express Carriers	1,276	175	629.1%	1,288	404	218.8%	0.0%	0.0%
ABX Air Inc.	1,057,644	110,652	855.8%	1,057,644	110,652	855.8%	6.6%	0.8%
DHL	1,146,890	1,304,227	-12.1%	2,680,082	3,009,269	-10.9%	16.8%	20.5%
Federal Express	2,971,285	2,994,330	-0.8%	5,914,588	5,798,523	2.0%	37.1%	39.4%
UPS	1,711,352	1,453,985	17.7%	3,519,016	2,931,814	20.0%	22.1%	19.9%
<b>Total Domestic</b>	<b>8,297,381</b>	<b>7,378,076</b>	<b>12.5%</b>	<b>15,884,390</b>	<b>14,675,658</b>	<b>8.2%</b>	<b>99.7%</b>	<b>99.8%</b>
<b>International Freight &amp; Mail</b>								
Delta Air Lines	21,576	17,685	22.0%	42,888	35,012	22.5%	0.3%	0.2%
<b>Total International</b>	<b>21,576</b>	<b>17,685</b>	<b>22.0%</b>	<b>42,888</b>	<b>35,012</b>	<b>22.5%</b>	<b>0.3%</b>	<b>0.2%</b>
<b>Total Freight and Mail</b>	<b>8,318,957</b>	<b>7,395,761</b>	<b>12.5%</b>	<b>15,927,278</b>	<b>14,710,670</b>	<b>8.3%</b>		
Total in Metric Tonnes	3,772.65	3,353.98		7,223.02	6,671.29			

**Summary of Air Freight and Mail (lbs.)**

Domestic Enplaned	3,537,988	3,084,454	14.7%	6,797,138	6,007,649	13.1%	42.7%	40.8%
Domestic Deplaned	4,759,393	4,293,622	10.8%	9,087,252	8,668,009	4.8%	57.1%	58.9%
International Enplaned	6,251	1,929	224.1%	8,357	17,822	-53.1%	0.1%	0.1%
International Deplaned	15,325	15,756	-2.7%	34,531	17,190	100.9%	0.2%	0.1%
<b>Total</b>	<b>8,318,957</b>	<b>7,395,761</b>	<b>12.5%</b>	<b>15,927,278</b>	<b>14,710,670</b>	<b>8.3%</b>		

Note: All freight and express on international waybills is reported as International even if on domestic flights.

**LOUIS ARMSTRONG NEW ORLEANS INTERNATIONAL AIRPORT**

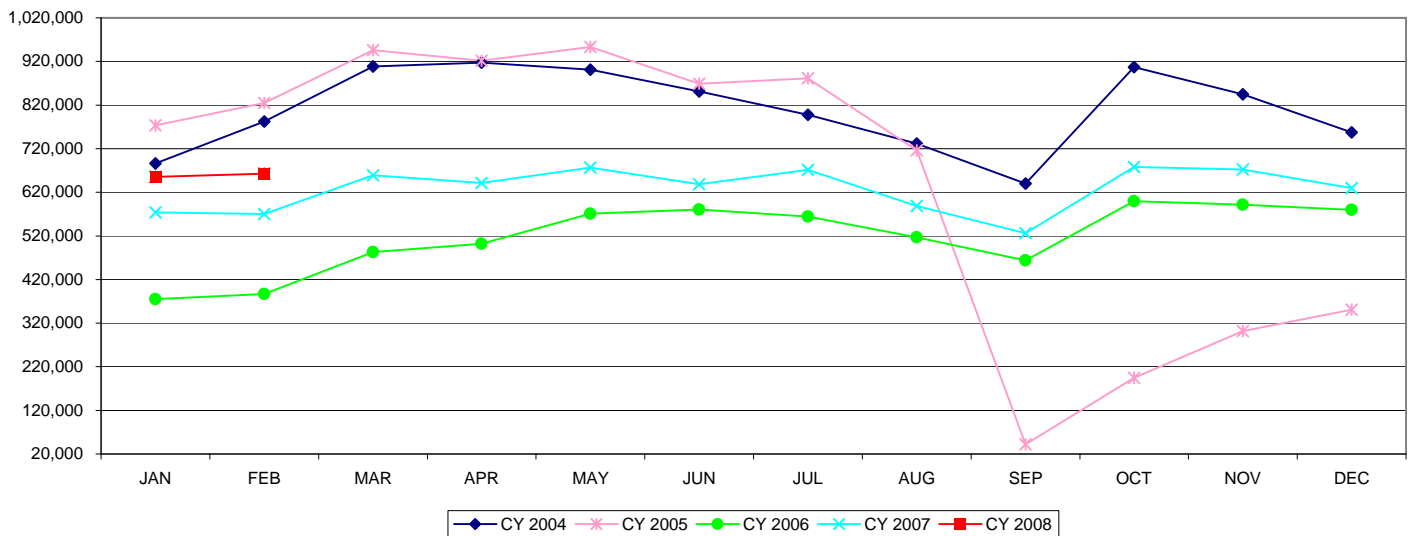
**Summary of Passenger Statistics**

	Month		% Change	Year-to-Date		% Change	Market Share	
	Feb-08	Feb-07		2008	2007		2008	2007
<b>Enplaned Passengers</b>								
Domestic Scheduled	333,206	281,611	18.3%	653,583	565,292	15.6%	49.6%	49.4%
> Domestic Charter	856	106	707.5%	2,728	106	2473.6%	0.2%	0.0%
International Charter	0	1,860	-100.0%	1,845	1,860	-0.8%	0.1%	0.2%
<b>Deplaned Passengers</b>								
Domestic Scheduled	327,388	284,766	15.0%	654,848	575,135	13.9%	49.7%	50.3%
> Domestic Charter	984	106	828.3%	2,591	106	2344.3%	0.2%	0.0%
International Charter	0	1,835	-100.0%	2,064	2,007	2.8%	0.2%	0.2%
<b>Total Passengers</b>								
Domestic Scheduled	660,594	566,377	16.6%	1,308,431	1,140,427	14.7%	99.3%	99.6%
> Domestic Charter	1,840	212	767.9%	5,319	212	2409.0%	0.4%	0.0%
International Charter	0	3,695	-100.0%	3,909	3,867	1.1%	0.3%	0.3%
> <b>Total</b>	<b>662,434</b>	<b>570,284</b>	<b>16.2%</b>	<b>1,317,659</b>	<b>1,144,506</b>	<b>15.1%</b>		

**Summary of Aircraft Operations**

Arrival Operations								
Domestic Passenger Airlines	3,818	2,846	34.2%	7,765	5,925	31.1%	96.8%	96.5%
Domestic Charter Airlines	24	1	2300.0%	31	1	3000.0%	0.4%	0.0%
Int'l Charter Airlines	0	6	-100.0%	0	7	-100.0%	0.0%	0.1%
All Cargo Airlines	115	97	18.6%	227	204	11.3%	2.8%	3.3%
<b>Total</b>	<b>3,957</b>	<b>2,950</b>	<b>34.1%</b>	<b>8,023</b>	<b>6,137</b>	<b>30.7%</b>		
Departure Operations								
Domestic Passenger Airlines	3,812	2,848	33.8%	7,764	5,927	31.0%	96.8%	96.6%
Domestic Charter Airlines	24	1	2300.0%	31	1	3000.0%	0.4%	0.0%
Int'l Charter Airlines	0	6	-100.0%	0	6	-100.0%	0.0%	0.1%
All Cargo Airlines	115	97	18.6%	227	203	11.8%	2.8%	3.3%
<b>Total</b>	<b>3,951</b>	<b>2,952</b>	<b>33.8%</b>	<b>8,022</b>	<b>6,137</b>	<b>30.7%</b>		

**Total Passengers by Month**





**LOUIS ARMSTRONG NEW ORLEANS INTERNATIONAL AIRPORT**

**Summary of Enplaned Passengers by Airline**

	Month		%	Year-to-Date		%	Market Share	
	Jan-08	Jan-07	Change	2008	2007	Change	2008	2007
<b>Domestic Scheduled</b>								
AirTran Airways	13,728	10,131	35.5%	13,728	10,131	40.0%	4.2%	3.6%
American Airlines	42,051	47,738	-11.9%	42,051	47,738	-11.9%	13.0%	16.8%
American Express Carriers	4,955	0	100.0%	4,955	0	100.0%	1.5%	0.0%
American System Total	47,006	47,738	-1.5%	47,006	47,738	-1.5%	14.5%	16.8%
Continental Airlines	44,909	43,166	4.0%	44,909	43,166	4.0%	13.9%	15.2%
Continental Express Carriers	2,806	3,587	-21.8%	2,806	3,587	-21.8%	0.9%	1.3%
Continental System Total	47,715	46,753	2.1%	47,715	46,753	2.1%	14.7%	16.5%
Delta Air Lines	26,599	20,844	27.6%	26,599	20,844	27.6%	8.2%	7.3%
Delta Express Carriers	11,122	10,145	9.6%	11,122	10,145	9.6%	3.4%	3.6%
Delta System Total	37,721	30,989	21.7%	37,721	30,989	21.7%	11.6%	10.9%
ExpressJet	9,281	0	100.0%	9,281	0	100.0%	2.9%	0.0%
JetBlue	7,412	7,535	-1.6%	7,412	7,535	-1.6%	2.3%	2.7%
Northwest	12,552	15,116	-17.0%	12,552	15,116	-17.0%	3.9%	5.3%
Southwest	86,752	72,504	19.7%	86,752	72,504	19.7%	26.8%	25.6%
United Airlines	25,246	20,387	23.8%	25,246	20,387	23.8%	7.8%	7.2%
United Express Carriers	3,068	5,079	-39.6%	3,068	5,079	-39.6%	0.9%	1.8%
United System Total	28,314	25,466	11.2%	28,314	25,466	11.2%	8.7%	9.0%
US Airways	22,833	23,123	-1.3%	22,833	23,123	-1.3%	7.0%	8.2%
US Airways Express Carriers	7,063	4,326	63.3%	7,063	4,326	63.3%	2.2%	1.5%
US Airways System Total	29,896	27,449	8.9%	29,896	27,449	8.9%	9.2%	9.7%
<b>Total Domestic Scheduled</b>	<b>320,377</b>	<b>283,681</b>	<b>12.9%</b>	<b>320,377</b>	<b>283,681</b>	<b>12.9%</b>	<b>98.9%</b>	<b>100.0%</b>
<b>Charter</b>								
> Domestic	1,872	0	100.0%	1,872	0	100.0%	0.6%	0.0%
International	1,845	0	100.0%	1,845	0	100.0%	0.6%	0.0%
> <b>Total Charter</b>	<b>3,717</b>	<b>0</b>	<b>100.0%</b>	<b>3,717</b>	<b>0</b>	<b>100.0%</b>	<b>1.1%</b>	<b>0.0%</b>
> <b>Total Enplaned</b>	<b>324,094</b>	<b>283,681</b>	<b>14.2%</b>	<b>324,094</b>	<b>283,681</b>	<b>14.2%</b>		

## LOUIS ARMSTRONG NEW ORLEANS INTERNATIONAL AIRPORT

## Summary of Deplanned Passengers by Airline

	Month		%	Year-to-Date		%	Market Share	
	Jan-08	Jan-07	Change	2008	2007	Change	2008	2007
<b>Domestic Scheduled</b>								
AirTran Airways	13,759	9,702	41.8%	13,759	9,702	40.0%	4.2%	3.3%
American Airlines	44,611	50,894	-12.3%	44,611	50,894	-12.3%	13.5%	17.5%
American Express Carriers	4,994	0	100.0%	4,994	0	100.0%	1.5%	0.0%
American System Total	49,605	50,894	-2.5%	49,605	50,894	-2.5%	15.0%	17.5%
Continental Airlines	44,060	42,919	2.7%	44,060	42,919	2.7%	13.3%	14.8%
Continental Express Carriers	2,823	3,476	-18.8%	2,823	3,476	-18.8%	0.9%	1.2%
Continental System Total	46,883	46,395	1.1%	46,883	46,395	1.1%	14.2%	16.0%
Delta Air Lines	27,935	20,730	34.8%	27,935	20,730	34.8%	8.4%	7.1%
Delta Express Carriers	11,348	11,860	-4.3%	11,348	11,860	-4.3%	3.4%	4.1%
Delta System Total	39,283	32,590	20.5%	39,283	32,590	20.5%	11.9%	11.2%
ExpressJet	9,218	0	100.0%	9,218	0	100.0%	2.8%	0.0%
JetBlue	7,878	7,542	4.5%	7,878	7,542	4.5%	2.4%	2.6%
Northwest	13,339	15,918	-16.2%	13,339	15,918	-16.2%	4.0%	5.5%
Southwest	86,814	72,770	19.3%	86,814	72,770	19.3%	26.2%	25.0%
United Airlines	25,962	20,613	25.9%	25,962	20,613	25.9%	7.8%	7.1%
United Express Carriers	3,291	5,288	-37.8%	3,291	5,288	-37.8%	1.0%	1.8%
United System Total	29,253	25,901	12.9%	29,253	25,901	12.9%	8.8%	8.9%
US Airways	23,321	23,322	0.0%	23,321	23,322	0.0%	7.0%	8.0%
US Airways Express Carriers	8,107	5,335	52.0%	8,107	5,335	52.0%	2.4%	1.8%
US Airways System Total	31,428	28,657	9.7%	31,428	28,657	9.7%	9.5%	9.9%
<b>Total Domestic Scheduled</b>	<b>327,460</b>	<b>290,369</b>	<b>12.8%</b>	<b>327,460</b>	<b>290,369</b>	<b>12.8%</b>	<b>98.9%</b>	<b>99.9%</b>
<b>Charter</b>								
Domestic	1,607	0	100.0%	1,607	0	100.0%	0.5%	0.0%
International	2,064	172	1100.0%	2,064	172	1100.0%	0.6%	0.1%
<b>Total Charter</b>	<b>3,671</b>	<b>172</b>	<b>2034.3%</b>	<b>3,671</b>	<b>172</b>	<b>2034.3%</b>	<b>1.1%</b>	<b>0.1%</b>
<b>Total Deplanned</b>	<b>331,131</b>	<b>290,541</b>	<b>14.0%</b>	<b>331,131</b>	<b>290,541</b>	<b>14.0%</b>		

**LOUIS ARMSTRONG NEW ORLEANS INTERNATIONAL AIRPORT**

**Summary of Freight and Mail Activity (Enplaned & Deplaned Combined)**

	Month		% Change	Year-to-Date		% Change	Market Share	
	Jan-08	Jan-07		2008	2007		2008	2007
<b>Domestic Freight &amp; Mail</b>								
American Airlines	15,917	1,000	1491.7%	15,917	1,000	1491.7%	0.2%	0.0%
Continental Airlines	352,127	367,665	-4.2%	352,127	367,665	-4.2%	4.6%	5.0%
Delta Air Lines	289,820	191,401	51.4%	289,820	191,401	51.4%	3.8%	2.6%
Delta Express Carriers	7,209	3,736	93.0%	7,209	3,736	93.0%	0.1%	0.1%
Northwest	11,540	3,579	222.4%	11,540	3,579	222.4%	0.2%	0.0%
Southwest Airlines	586,596	684,895	-14.4%	586,596	684,895	-14.4%	7.7%	9.4%
United Airlines	39,629	21,404	85.1%	39,629	21,404	85.1%	0.5%	0.3%
US Airways	0	36,609	-100.0%	0	36,609	-100.0%	0.0%	0.5%
US Airways Express Carriers	12	229	-94.8%	12	229	-94.8%	0.0%	0.0%
DHL	1,533,192	1,705,042	-10.1%	1,533,192	1,705,042	-10.1%	20.2%	23.3%
Federal Express	2,943,303	2,804,193	5.0%	2,943,303	2,804,193	5.0%	38.7%	38.3%
UPS	1,807,664	1,477,829	22.3%	1,807,664	1,477,829	22.3%	23.8%	20.2%
<b>Total Domestic</b>	<b>7,587,009</b>	<b>7,297,582</b>	<b>4.0%</b>	<b>7,587,009</b>	<b>7,297,582</b>	<b>4.0%</b>	<b>99.7%</b>	<b>99.8%</b>
<b>International Freight &amp; Mail</b>								
Delta Air Lines	21,312	17,327	23.0%	21,312	17,327	23.0%	0.3%	0.2%
<b>Total International</b>	<b>21,312</b>	<b>17,327</b>	<b>23.0%</b>	<b>21,312</b>	<b>17,327</b>	<b>23.0%</b>	<b>0.3%</b>	<b>0.2%</b>
<b>Total Freight and Mail</b>	<b>7,608,321</b>	<b>7,314,909</b>	<b>4.0%</b>	<b>7,608,321</b>	<b>7,314,909</b>	<b>4.0%</b>		
Total in Metric Tonnes	3,450.37	3,317.31		3,450.37	3,317.31			

**Summary of Air Freight and Mail (lbs.)**

Domestic Enplaned	3,259,150	2,923,195	11.5%	3,259,150	2,923,195	11.5%	42.8%	40.0%
Domestic Deplaned	4,327,859	4,374,387	-1.1%	4,327,859	4,374,387	-1.1%	56.9%	59.8%
International Enplaned	2,106	15,893	-86.7%	2,106	15,893	-86.7%	0.0%	0.2%
International Deplaned	19,206	1,434	1239.3%	19,206	1,434	1239.3%	0.3%	0.0%
<b>Total</b>	<b>7,608,321</b>	<b>7,314,909</b>	<b>4.0%</b>	<b>7,608,321</b>	<b>7,314,909</b>	<b>4.0%</b>		

Note: All freight and express on international waybills is reported as International even if on domestic flights.

**LOUIS ARMSTRONG NEW ORLEANS INTERNATIONAL AIRPORT**

**Summary of Passenger Statistics**

	Month		%	Year-to-Date		%	Market Share	
	Jan-08	Jan-07	Change	2008	2007	Change	2008	2007
<b>Enplaned Passengers</b>								
Domestic Scheduled	320,377	283,681	12.9%	320,377	283,681	12.9%	48.9%	49.4%
> Domestic Charter	1,872	0	100.0%	1,872	0	100.0%	0.3%	0.0%
International Charter	1,845	0	100.0%	1,845	0	100.0%	0.3%	0.0%
<b>Deplaned Passengers</b>								
Domestic Scheduled	327,460	290,369	12.8%	327,460	290,369	12.8%	50.0%	50.6%
Domestic Charter	1,607	0	100.0%	1,607	0	100.0%	0.2%	0.0%
International Charter	2,064	172	1100.0%	2,064	172	1100.0%	0.3%	0.0%
<b>Total Passengers</b>								
Domestic Scheduled	647,837	574,050	12.9%	647,837	574,050	12.9%	98.9%	100.0%
> Domestic Charter	3,479	0	100.0%	3,479	0	100.0%	0.5%	0.0%
International Charter	3,909	172	2172.7%	3,909	172	2172.7%	0.6%	0.0%
> <b>Total</b>	<b>655,225</b>	<b>574,222</b>	<b>14.1%</b>	<b>655,225</b>	<b>574,222</b>	<b>14.1%</b>		

**Summary of Aircraft Operations**

Arrival Operations								
Domestic Passenger Airlines	3,947	3,079	28.2%	3,947	3,079	28.2%	97.1%	96.6%
Domestic Charter Airlines	7	0	100.0%	7	0	100.0%	0.2%	0.0%
Int'l Charter Airlines	0	1	-100.0%	0	1	-100.0%	0.0%	0.0%
All Cargo Airlines	112	107	4.7%	112	107	4.7%	2.8%	3.4%
<b>Total</b>	<b>4,066</b>	<b>3,187</b>	<b>27.6%</b>	<b>4,066</b>	<b>3,187</b>	<b>27.6%</b>		
Departure Operations								
Domestic Passenger Airlines	3,952	3,079	28.4%	3,952	3,079	28.4%	97.1%	96.7%
Domestic Charter Airlines	7	0	100.0%	7	0	100.0%	0.2%	0.0%
Int'l Charter Airlines	0	0	0.0%	0	0	0.0%	0.0%	0.0%
All Cargo Airlines	112	106	5.7%	112	106	5.7%	2.8%	3.3%
<b>Total</b>	<b>4,071</b>	<b>3,185</b>	<b>27.8%</b>	<b>4,071</b>	<b>3,185</b>	<b>27.8%</b>		

**Total Passengers by Month**

